

GRAND CONNECTIONS

Volume XI, No. 3



January 2005

Nursing, Allied Health combine for new college

Two schools of Saint Louis University, once part of the same school before splitting in 1979, rejoined this month with a new name: the Edward and Margaret Doisy College of Health Sciences.

SLU's board of trustees recently approved this new joint venture of the School of Nursing and the Doisy School of Allied Health Professions.

"The merger will help us achieve new heights in educating health care professionals, including nurses, physical therapists, dietitians and health information management professionals, to name a few," said University Provost Dr. Joe Weixlmann. "With the creation of the Edward and Margaret Doisy College of Health

Sciences, we have the opportunity to create for our students an innovative curriculum uniquely positioned to more effectively address current and future health care issues."

Weixlmann and Dr. Charlotte Royeen, dean of the combined school, said that new and shared core courses in areas such as genetics, informatics, ethics, forensics and health economics could be developed to make sure that students remain on the leading edge of education in all of the various health professions.



Royeen

"Students always are our number one priority," said Royeen, who previously had served as dean of the Doisy School of Allied Health Professions after building a national academic reputation in her field of occupational therapy. "The health care environment is becoming increasingly complex, and we are committed to better serving the needs of students training to be health care professionals, whether they're nurses, physician assistants, occupational therapists, nutritionists, clinical laboratory scientists or any of the fields in the school."

The School of Nursing remains as a unit within the college, as do the departments of clinical laboratory science, health information management, dietetics and

See Schools, page 8

McNamee lights tree, welcomes Christmas to Cupples House

Maurice McNamee, S.J., shares memories and emotion as he lights the tree in the foyer of Samuel Cupples House. Instrumental in restoring and renovating the house in the mid-1970s, McNamee served as a guest of honor during the December event. The tree lighting was part of a Victorian Christmas at Cupples House. In addition, the mansion's new museum shop debuted, complete with ornaments, suncatchers and truffles as well as jewelry handcrafted by SLU employees. **Read the full story on page 2.** (Photos by Allison Babka Burney)



Longtime dean of nursing retires

Dr. Joan Hrubetz, professor and dean of the School of Nursing and a beloved educator at the University, retired in December.

During her 22-year tenure as dean, Hrubetz led the School of Nursing to its current position of national prominence. Under her guidance, the school distinguished itself with numerous national accolades for excellence in teaching, innovative research and graduates who are known for their clinical competence as well as their conscientious and compassionate patient care.

A new scholarship, the Joan Hrubetz Honorary Scholarship for nursing students, has been created in recognition of her years of service.

Those who have worked with Hrubetz said a key to her success is her compassion and her unusual talent for making connections with all sorts of people.

"Go anywhere in the city — everybody knows Joan," said Dr. Dotti James, associate professor of nursing. "Nurse managers, CEOs, they all know who she is and refer to her as a friend. Because of people's feelings for her, she's very hard to say no to."

Hrubetz received her diploma in nursing from St. John's Hospital School of Nursing in St. Louis and her B.S.N. in nursing from SLU. She earned her master's degree and doctorate in education/counseling from SLU and was awarded an honorary doctor of science from the University of San Francisco.

Around the time she received her B.S.N., she contracted polio and began using a wheelchair. She started working as a staff nurse at St. John's Hospital at the same time she was undergoing physical rehabilitation there.

"They told me, 'As long as you're here, you might as well work,'" Hrubetz said. "Honestly, I don't think it ever occurred to me not to practice nursing. That's probably in part because my family and friends never treated me as disabled."

She went on to work as an instructor in medical-surgical nursing at St. Louis Municipal School of Nursing and assistant director of the nursing service at Barnes Hospital. She later worked at Barnes School of Nursing, where she rose to the level of director before coming to work at SLU.

See Dean, page 2



Hrubetz

Staff members, student workers now use new online timekeeping system

This month, Saint Louis University staff members and student employees begin using a new online timekeeping method. The change is part of the Banner implementation and greatly enhances the University's timekeeping system.

"The new system makes the payroll process much more efficient and accurate," said Kathy Hagedorn, vice president for human resources. "But really, the new payroll process isn't much different for most staff members and student workers."

Previously, payroll was completed through a system that is nearly 20 years old, a dinosaur in technology terms, Hagedorn said. The old system also generated a huge amount of paper as well as related work and expense.

Instead of filling out a paper time sheet, most staff

See Timekeeping, page 7



Hagedorn

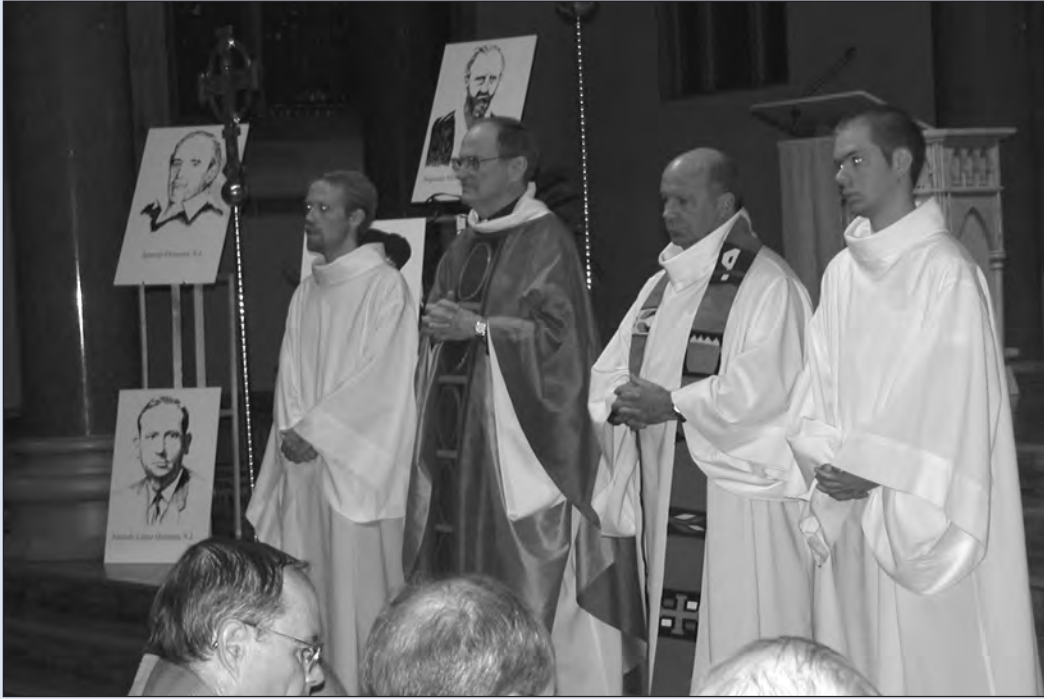
In This Issue



Nutrition and dietetics professor earns honor for teaching.....3

College of Arts and Sciences says goodbye to Ritter Hall.....4

Campaign: Couple leaves SLU \$5.6 million for scholarships.....8



REMEMBERING THE JESUITS: Bob Costello, S.J., (second from left) and University President Lawrence Biondi, S.J., (second from right) celebrate a Mass commemorating the anniversary of the 1989 slayings of Jesuits in El Salvador. Costello was provincial of the Missouri province at the time of the slayings. The Mass was part of Ignatian Solidarity Week in November and was sponsored by campus ministry and the Bellarmine Jesuit Community. (Photo by Allison Babka Burney)

Cupples House goes back in time for Victorian Christmas

The majestic mansion Samuel Cupples House really came alive for Christmas. Festive wreaths adorned the doors, welcoming people into a Victorian holiday world. Inside, fragrant boughs of pine decorated mirrors and mantles, and a Christmas tree was alight with candles and flowing ribbons.

"The house's interior is elegantly dressed everyday, but it goes black tie through Christmas," said Mary Marshall, coordinator for Cupples House as well as the Saint Louis University Museum of Art.

This year, special guest Maurice B. McNamee, S.J., lit the Christmas tree in Cupples House. A former professor of English and art history, McNamee oversaw the renovation and remodeling of the house during the mid-1970s, preventing its demolition and opening it to the public.

"It's so appropriate that Father McNamee could be here to light the tree," Marshall said. "He was instrumental in this house's renovation."

Built in 1888, the house was constructed to show Samuel Cupples' wealth after living a rags-to-riches life. The interior features exquisitely carved wood, stained glass and original furnishings. Although the architecture is considered Romanesque Revival, many call it Victorian because of the time it was built.

"Samuel Cupples fulfilled the Victorian ideal of a self-made man. He died wealthy but gave much away," said David Suwalsky, S.J., executive director of Cupples House.

Botanicals on the Park, located on Grand Avenue, was selected to decorate the house for the holidays. After touring the house just once, designer Dean Riebeling set about adorning the home Victorian style. Once he was finished, visitors noticed bows and pine swinging from the chandeliers and beauti-

ful topiaries and wreaths peeking out from all areas of the house.

"We used the Victorian style of decorating," Marshall said. "It keeps with the elegant taste of Cupples House."

Riebeling said that upper-class families such as the Cupples' had special decorations during the holidays. They often used dried flowers and herbs from their own gardens to adorn tables and balustrades. A Christmas tree sometimes was available, but it was lit just for one day because the needles would become dry.

Cupples House isn't simply a trip back in time, though. The domed conservatory of Samuel Cupples House now is home to three flat-screen computer work stations, allowing visitors to take a virtual tour of the elegant rooms and galleries of the three-story mansion. In addition, a wheel chair lift has been installed in the conservatory, making Cupples House handicap-accessible for first floor receptions and tours.

In addition, the house recently debuted its first shop. Nestled into a corner of the house, the shop features items such as sun catchers, T-shirts and note cards. Paintings from within Cupples house are on night lights, while a golden replica of the house is a holiday ornament. Other items include chocolate truffles, CDs and beaded jewelry created by SLU staff members Lisa Suggs, Heather Lake and Jeannette Landon.

"We have a cool boutique right here," Marshall said. "These are distinctive gifts you don't have to travel for, and they embody the feel of Cupples House."

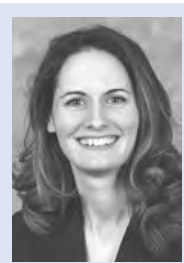
Samuel Cupples House is open 11 a.m.-4 p.m. Tuesday-Saturday. It re-opens in February. For more information, call 977-3575.

A note from the editor

The start of a new year always is filled with excitement and change. Will this be the year I finally get organized? Will I give up the candy bars? Will I put away holiday decorations before April? I'm a bit hesitant to say that I'll accomplish all of these items with gusto, but I'm looking forward to the challenge.

A little challenge is good for publications, too. When the inimitable Chris Waldvogel, previous *Grand Connections* editor, left the University for the seminary, our team began thinking about ways to make this newspaper even better than it already was.

As the coordinator for SLU Newslink during the past several years, I was tapped to fill Chris'



shoes and bring *Grand Connections* into the new year. Sharing news with University faculty and staff members is important, and I'm happy that in my new position as editor of internal communications, I now can help voice your stories and accomplishments through print as well as through the Web. In upcoming issues of *GC* this year, look for more features, more synergy with other SLU news sources and more photos.

And don't forget: if you have a suggestion about improving *Grand Connections*, e-mail me at gc@slu.edu. You also may e-mail me your professional notes, media mentions and story ideas.

Here's to a peaceful, productive new year.

-- Allison Babka Burney

Dean

from page 1

Hrubetz joined SLU in 1975 and became dean of the School of Nursing in 1982. Throughout her tenure, she has used her outstanding interpersonal skills to foster *esprit de corps* among students, faculty and administrators at the school, and to strengthen relationships between the university administration and the School of Nursing.

Dr. Joan Carter, associate dean of the School of Nursing, has known Hrubetz for 45 years and worked alongside her for the past 10. She said Hrubetz is a firm decision-maker who takes all points of view into account.

"She is very open to divergent opinions and thinking, which is a must in a university administrator. She listens to everybody's ideas. She made working here fun," Carter said.

Hrubetz said she is most proud of the new programs that she helped usher in, including the doctoral program in nursing and an Internet-based distance learning program. She's also proud of the friendships she made with her coworkers and students.

"I wish I'd been able to be more present to more people, to express my great appreciation and affection for them," Hrubetz said. "The friends I've made, the opportunities I've had have been almost indescribable."

Hrubetz plans to stay in touch with her colleagues and stay busy in retirement.

"I'm off to do something else," she said. "I want to learn to be a better cook and spend time with some of my friends who retired earlier."

She also is interested in staying active in community groups, including Stray Rescue and Our Little Haven. Throughout her career she has been active in many organizations, including the American Association of Colleges of Nursing; Midwest Alliance in Nursing; Paragard Inc., Center for Independent Living; and others.

She has served on the board of directors at Kenrick-Glennon Seminary, SSM Rehabilitation Institute, SHARE, St. Mary's Health Center, Rockhurst's Research College of Nursing and Chaminade College Preparatory School.



Human Resources FYI

Q: Sometimes it's difficult to leave the office to take professional development classes. Is there another alternative?

A: A variety of professional development courses now are available online. Employees may take courses such as "Fire Extinguisher Safety" and "Conflict Management for Employees," while supervisors may choose from "Conducting Performance Reviews" and "Preventing Workplace Harassment," among others. Completed courses will be recorded in each employee's history. For more information, contact the professional and organizational development office at 977-2266 or training@slu.edu.



Editor: Allison Babka Burney

Contributors: Clayton Berry, Rachel Doyle, Jeff Fowler, Amy Garland, Laura Geiser, Tom Kelly, S.J., Joe Muchlenkamp, Patrick O'Malley, Matt Shaw, Nancy Solomon.

Grand Connections' central editorial office is in DuBourg Hall, Room 39, 221 N. Grand, St. Louis, Mo., 63103. Telephone: 977-2519. E-mail: gc@slu.edu. Web address: www.slu.edu/pr/grand_connections.html. © 2005, Saint Louis University

UPCOMING ISSUE: The next issue of *Grand Connections* is scheduled to be on the stands in February. The deadline for submissions is Friday, Jan. 28.

Short honored for excellence in teaching

Joy Short certainly gives her students plenty of food for thought. With a smile on her face and an approachable attitude, the assistant professor of nutrition and dietetics encourages them to learn, interact and think differently in the classroom.



Short

Those students – as well as faculty members in the department – think enough of her to reward her with an Emerson Excellence in Teaching Award.

“The award came as a bit of a shock,” Short said. “I have so many mentors here in the Doisy College of Health Sciences, and I hold them in such high esteem, that for them to have nominated me is quite humbling.”

“And for the students to help with the nomination and to be recognized by them for our work in the classroom, it’s just very rewarding,” Short continued.

Short is an assistant professor in the department of nutrition of dietetics, on faculty since July 1998.

The Emerson Excellence in Teaching Award is presented annually to more than 100 outstanding educators in the St. Louis area. Honorees are selected for their creativity, quality and dedication to teaching.

Stay home when sick, SLU doc says Mengel’s tips can help ward off winter illness

If you’re trying to figure out whether you feel too cruddy to go to work, a Saint Louis University family doctor has some advice for you: Stay home.

“Staying home if you’re sick decreases the spread of illness and helps people get better faster,” said Mark Mengel, M.D., chairman of the department of community and family medicine. “Particularly with the shortage of the flu vaccine, we want to do everything we can to stop the spread of sickness this winter.”

A sore throat, stuffy nose, cough and sneezing can be symptoms of both a cold and the flu. However, Mengel said that if you have the flu, you feel a lot worse and are likely to have other symptoms, such as a high fever that lasts three to four days, a headache, muscle aches, exhaustion and weakness.

“We can actively treat the flu with antiviral medications that decrease the severity and duration of the illness,” said Mengel, who also is director of the Primary Care and Prevention Center at SLUCare’s Des Peres Medical Arts Pavilion in west St. Louis County.

“Patients who take the medication typically get well a day sooner, and their symptoms are about half as severe as those who don’t get prescriptions,” Mengel said.

Physicians can test for influenza with a rapid sensitive flu test, which is similar to a quick throat swab to test for strep throat.

“In five to 10 minutes, they’ll get an answer and if they have the flu, they can begin to take medicine to help them feel better,” Mengel said.

Strategies for staying healthy this winter

• **Every time you shake hands, make a mental note to wash yours.** Don’t forget to wash frequently other times, too. Thoroughly running lots of warm water over your hands dilutes the virus and sends it down the drain.

• **Try not to touch your nose and eyes.** These are places where cold germs could enter your body.

• **Get enough sleep** – eight to 10 hours per night works for most people. If you become fatigued because you aren’t spending enough time in the sack recharging your batteries, your body can’t fight colds and other bugs.

• **If you smoke, stop now.** Smoking destroys the cilia – those little hair-like fibers inside the nose and lung tube cells – that keep mucus from clogging the lining of the nose and lungs.

• **Don’t eat after double dippers.** The person who nabs a second and third dollop of ranch dressing on the same carrot stick may be passing the virus to those who eat after him. If you have a large piece of dipping food, be sure to break it into pieces and dip each separately.



Mengel



Employee Spotlight

Name: Mike Meehan

Position: assistant director of alumni relations

Nature of your work: connecting alumni to SLU

Born: Terre Haute, Ind.

Education: bachelor of science in marketing, Indiana State University ('94)

Three words that describe me: determined, loyal, creative

For one day, I'd like to trade places with: the captain of a river barge.

If I couldn't have my present job, I'd like to: teach.

Favorite vacation spot: Lake Cumberland, Ky.

Favorite CD: Stevie Ray Vaughn, Greatest Hits

Favorite television shows: *SportsCenter*, *Insomniac* and reruns of *Seinfeld* and the *Andy Griffith Show*

I'd like to meet: Lance Armstrong.

Pet peeve: using cell phones at inappropriate times

Favorite food: pork chops

Favorite sports team: Indiana Pacers

Best advice your mother ever gave you: Do your best, and everything else will work its way out.

Fondest childhood memory: playing catch with my dad

Guilty pleasure: Oreos and milk for breakfast

Almost nobody knows that I: am a graduate of Dairy Queen's "Cone College."

A good movie I've seen lately: *Fahrenheit 911*

My hobbies are: sports, art/ photography, water skiing.

Best career move: moving to St. Louis and working at SLU

Someday I hope to: drive across the country.

Proudest moment: having some of my photos chosen to be part of an exhibition

Something that remains a mystery to me: why we thought 1980s music and fashions were cool

A good way to relieve stress: a long drive with the radio blaring

Words to live by: Live an interesting life and people will find you interesting.



Humphrey receives regional housing award

Kathy Humphrey, vice president for student development, has been selected for the 2004 William B. Sweet Distinguished Service Award by the Upper Midwest Region of the Association of College and University Housing Officers.

“Her co-workers knew ahead of time that Kathy was going to get this nice surprise and be honored all over the Midwest,” said Argyle Wade, director of housing and residence life. “It’s something she’s deserved for many years, and it’s nice that it’s finally happened.”

The Sweet Award is the Association of College and University Housing Officers’ highest honor. Those chosen for the award represent a high standard of excellence through their contributions and dedication to the regional and international housing associations and to the field in general.

In addition, their service is expected to leave a lasting impact as they act as positive role models for colleagues and new professionals.

Humphrey’s co-workers believe that she will, indeed, have a lasting impact on the University. In their nomination letter, they wrote:

The most recent and most outstanding example of her commitment has been her role in the renovation of Busch Student Center. Kathy chaired the committee that developed this proposal. Working closely with the Student Government Association and others, she was diligent in getting student input and involving students in the decision-making process, which would be critical to the success of the new student center.

Most remarkably, Kathy has raised millions of dollars to see her dream become a reality. In truth, this building is a testament to her willpower and force of vision.

“Kathy always has a positive attitude,” said Barb Lind, senior administrative assistant for student development. “She’s an advocate for students and follows through on their requests, even the simplest ones.”

“Kathy is one of the reasons I came to work here at SLU,” Wade said. “I wanted to work for her as well as the University. There’s an excitement in what we’re trying to do for students.”

Humphrey is a past president of the Upper Midwest Region of the Association of College and University Housing Officers and former director of housing and residence life at SLU.



Humphrey

NEWS

★ ★ ★ BRIEFS ★ ★ ★

DOCENTS NEEDED:

Interested in learning more about Samuel Cupples House? The popular museum and historical landmark needs docents to lead tours and provide information about the house and its treasures. For more information, call 977-3575.

"THE RAIN IN SPAIN":

Saint Louis University Theatre will present the classic musical *My Fair Lady*. Based on George Bernard Shaw's 1912 play *Pygmalion*, the original production ran on Broadway 1956-1962, making a star of the lead, Julie Andrews. It then became a movie in 1964 and won eight Academy Awards, including Best Film. Catch the play at 8 p.m. Feb. 18, 19 and 25, and at 2 p.m. Feb. 20. For tickets, call the SLU Theatre box office at 977-3327.

SPIRITUAL REFRESHER:

Take some time for yourself this semester and attend the faculty-staff retreat March 5-6. "Come, Holy Spirit: Gifts for a Lifetime," will be led by Harry Byrne, O.P., assistant professor of pastoral theology at the Aquinas Institute of Theology and an experienced spiritual director. Participants will consider the gifts of the Spirit and the variety of ways they are given at different stages in life. They also will look at these gifts' practical applications when living the Christian life. The overnight retreat opens Saturday at 9 a.m. and closes Sunday at 3 p.m. It will be held at Mercy Center in west St. Louis County. The cost is \$50. The retreat is subsidized by campus ministry. Early registration is required. For more information, call Mary Flick at 977-2428.

MAX THE MASTERCARD:

The Epoch Group has notified Saint Louis University that the MBI Flex MasterCards for the flexible spending plan will be good until January 2006. Those currently enrolled in the flexible spending plan should hold onto their MBI Flex MasterCards, as it will be reloaded and continue to



MOVING TIME: The College of Arts and Sciences held an open house in December as a final goodbye to Ritter Hall, where the college's administrative offices have been for decades. The college offices now are housed in Fusz Hall. At left, faculty members Dr. David Murphy and Dr. Teresa Johnson review office plans with Associate Dean Dr. Stephen Dina. At right, Associate Dean Vince Spaziano (left) discusses the move with Dean J. Michael Sproule. (Photos by Allison Babka Burney)



work through 2005. Those who have lost or destroyed their MBI Flex MasterCards should contact Peggy Heck at the Epoch Group at 822-6110 to order a replacement.

GRANTS GALORE: A number of researchers at Saint Louis University have received sustainability grant awards from the VOICES Project. The merit-based program, with awards of up to \$2,500, rewards innovative activities that sustain the concepts, goals and priorities of the VOICES Project. Awardees are: Stephen Belt (aviation science), "Humanitarian Aviation Course Development"; Dr. Debra Faughn (service leadership), "The Reflectere Group: Impressions for Life"; Dr. Anthony Houston (modern and classical languages) and Dr. Paaige Turner (communications), "The Vocation of the Language Teacher"; Carol Lunning (career services), "My Passion, My Purpose, My Path"; Dr. Darina Sargeant (physical therapy), "Spirituality/Religiosity in Allied Health Professions: Student Perspectives"; and Dr. Mary Stephen (Reinert Center for Teaching Excellence) and Christy Finsel (Center for

Leadership and Community Service), "Reflection on Service and Justice Experiences." The VOICES project is a five-year project that is currently in its third year. Funded by a grant through the Lilly Foundation, it is focused on creating, sponsoring and conducting activities that help to promote a sense of vocation in the SLU community among students, faculty and staff members.

WILD SIDE: The Wilderness Adventure Club will sponsor a wilderness first aid course Saturday, Jan. 22, and Sunday, Jan. 23. The 16-hour course will be taught by instructors from the Wilderness Medicine Institute, an affiliate of the National Outdoor Leadership School. The course prepares participants to respond appropriately to back-country medical emergencies. Many scouting groups and summer camps require this certification before volunteers and employees can lead group outings. The cost for the course is \$160 for the general public, but University employees may register for the reduced price of \$100. For more information, contact Lisa Reiter at 977-1530 or reiterlr@slu.edu.

POST-HOLIDAY WORK-OUT:

Campus recreation offers a variety of fitness classes to Simon Recreation Center members and non-members. Classes include group activities such as aerobics, kickboxing, spinning, dance, yoga and pilates. Some classes are offered at Salus Center, as well. Classes begin in mid-January and end before spring break. Register at Simon Rec Center. For more information, call Glen Kemper at 977-3969.

CONFERENCE CALL:

Parks College of Engineering, Aviation and Technology and the School of Public Health invite abstracts for their second Safety Across High-Consequence Industries Conference, Tuesday, Sept. 20-Thursday, Sept. 22. The conference links aviation and health care to discuss safety from the perspectives of design, operation, maintenance, recovery and emergency management. The goal is to continue to provide a venue for these two disciplines to share theoretical concepts as well as pragmatic solutions. SLU is uniquely positioned to provide leadership in such an interdisciplinary collaboration as the only institution in the nation to house both aviation programs and medical/health care programs. Abstracts are due Monday, Feb. 14. For more information, contact Dolores Seats at 977-8302 or seatsda@slu.edu.

EVENTS WITH EASE:

University event services has released a newly expanded Web site, broadening the scope of information available online regarding campus meeting and event venues. Visit event services at www.slu.edu/events to learn more. The launch of the new site is significant because it provides convenient, online access to reservation policies and pricing for all clients — faculty and staff groups, student organizations and external groups — and allows visitors to browse campus spaces by type and view space features such as available room layouts, capacities, technology and prices. Members of the event services office believe that this complete online listing will increase the use of lesser-known meeting spaces. "We are committed to providing quality service through centralized event scheduling and coordination of

service providers for all University and non-University events," said Ed Kidd, associate vice president of event services. "Updating and expanding our Web site's information continues that commitment." In the future, event services plans to add online forms for requesting space reservations as well as launch a Web-based campus-wide master calendaring system.

ARTFUL VOYAGE:

An exhibit jointly sponsored by the department of American studies and the VOICES Project has been installed at the Wolk Gallery in the College of Architecture at the Massachusetts Institute of Technology. "Vertical City: The Life and Design of Pruitt-Igoe," was curated by Dr. Joseph Heathcott with graduate students from The American City Studio. Heathcott delivered a lecture at the opening reception in October. "Vertical City" examines the history of the Pruitt-Igoe complex in St. Louis, the most infamous public housing project ever built. Through photographs, maps, prints, plans and film, the exhibit explores the role and impact of architectural design on the human environment and the urban landscape. Prior to its run at MIT, the exhibit was installed at the Sheldon's Bernoudy Gallery of Architecture in St. Louis.

BASKETBALL CHANGE:

The Billikens' Conference USA men's basketball game against DePaul has been moved to 1:10 p.m. Sunday, Feb. 6, at Savvis Center. Originally scheduled for the previous night, the game shift allows Savvis Center to host a world welterweight title fight. For a complete schedule of Billiken games, visit www.slubillikens.com.

VIDEO VENTURE:

The new SLU video is here. Intended as a tool to assist with undergraduate recruitment, the 10-minute video illustrates what makes the University great. More than 20 students, faculty members and alumni share their stories about why SLU is a great place to live, learn and make a difference. Check out the video at suddenlyorange.com/stream/slu_video.html.



A STELLAR DAY: During a November breakfast ceremony at Bannister House, five employees were recognized as SLU Stars for their dedication and professionalism at the University. Here, University President Lawrence Biondi, S.J., (far left) and University Provost Dr. Joseph Weixlmann (far right) congratulate honorees (clockwise from front center) Rebecca Grubb, Kevin Christisen, Marian Linck, Gloria Schwartz and Kathleen Carroll Parvis. (Photo by Allison Babka Burney)

Upcoming *Shared Vision* gives clear picture of Jesuit spirit

What does it mean to work at a Jesuit university? What difference does it make? Discover for yourself by attending *Shared Vision* this semester.

Shared Vision is a three-part video-and-discussion series that explores the history of the Jesuits, the spirit and insights of their founder Ignatius Loyola and the guiding vision that animates Jesuit education in the third millennium.

More than 2,100 faculty and staff have attended *Shared Vision* since the program began during the spring 1996 semester, and more than 850 have completed the three-part series.

Shared Vision: Beginnings examines the beginnings of the Ignatian vision in the life of Ignatius Loyola, the development of the Spiritual Exercises and the founding of the Society of Jesus. It will be offered Tuesday, Feb. 8, and Wednesday, Feb. 16.

The story continues in part two, *Shared Vision: Transformation*, which looks at how that Ignatian

vision was transformed by the new cultures and new areas of knowledge it encountered and the new partnerships it formed as it spread around the globe. It will be held Tuesday, Feb. 15, and Wednesday, Feb. 23.

The third and final segment, *Shared Vision: Transitions*, highlights the transitions the Ignatian vision encountered as it became part of American culture and the modern era. Participants are challenged to consider thoughtfully the next step for those who want to continue the Ignatian vision in education. It is scheduled for Tuesday, Feb. 22, and Wednesday, March 2.

Tuesday sessions are 2:30-4:30 p.m., in Jesuit Hall, while Wednesday sessions are 8:30-10:30 a.m., in Learning Resources Center, Room 111 or 112.

For more information, contact Mary Flick at 977-2428 or flickmj@slu.edu.



FOOD WITH HEART: University President Lawrence Biondi, S.J., greets Kathy Humphrey and Tony Minor at McMurphy's Grill during the fall semester. Biondi served as celebrity host for the downtown eatery that helps homeless/mentally ill people develop good work habits, learn food service skills and discover successful careers in the restaurant industry. (Photo by Allison Babka Burney)

SLU discovers way to stretch flu vaccine among adults under age 60

New research demonstrates a possible way to more than double the available supply of influenza vaccine for adults between ages 18-60, according to a study led by Saint Louis University's Center for Vaccine Development that appeared in a recent edition of the *New England Journal of Medicine*.

When it comes to flu vaccinations, the conventional "one size fits all" approach for adults is coming under question, said lead researcher Robert Belshe, M.D., director of the Center for Vaccine Development.

"We found that we can give lower doses of vaccine, 40 percent of the full dose, if we gave the vaccine not as a shot into the muscle, but if we gave the shot 'intradermally' between the layers of the skin," Belshe said. "This lower-dose intradermal vaccine worked well in adults 18-60 years of age."

Intradermal vaccination is an injection between the layers of the skin using a tiny needle, such as what is used for a tuberculosis skin test. Administration of the vaccine in this way involves injecting a small bleb of vaccine into the skin, much like a mosquito bite or allergy skin test, using a very small needle.

Belshe said the lower-dose intradermal vaccine did not, however, work as well in an older population.

A total of 238 volunteers were enrolled at SLU and the University of Rochester in the study. This included 130 people between 18-60 and 108 older than 60. Some people received a currently licensed influenza shot in the traditional way — full dose, using a shot directly into the muscle. A second group received an investigational vaccine by GlaxoSmithKline Biologicals intradermally and with a dose that was 40 percent of the standard dose.

Belshe said when compared with the full dose of vaccine given as the traditional shot, antibody responses to a lower dose vaccine given under the skin were as vigorous in younger persons but not in people older than 60 years.

"We are learning that the same size dose doesn't seem to fit all ages," Belshe said. "Younger people may need less vaccine, and older people may need more vaccine."

The nation's vaccine supply for younger healthy persons conceivably could be stretched 2.5 times using the scheme published in this study. People in this age group for whom the CDC recommends vaccinations (even with this year's shortages) include health care workers and all people who have contact with babies under six months.

The study also found that there was significantly less pain with intradermal administration versus the traditional "intramuscular" shot. In addition, there was more inflammation at the injection site using the intradermal approach.

Belshe said this could be a good thing. More redness and swelling probably means that the vaccine is doing its job in producing an antibody response.

"More and larger studies are needed to confirm these options so that agencies such as the CDC can make recommendations to physicians," Belshe said.



Belshe

UNIVERSITY CONDOLENCES

• **Dr. Barbara Woods**, former director of African-American studies, died Dec. 23. Dr. Woods had given 28 years of service to the University.

• **William Charles Thomas**, coordinator for comparative medicine, died Nov. 6. Mr. Thomas had given 22 years of the service to the University.

• **Laura R. Copeland**, senior secretary in the John Cook School of Business, died Oct. 21. Ms. Copeland had given one year of service to the University.

• **Louise T. Marshall**, administrative assistant in radiology, died Oct. 18. Ms. Marshall had given 26 years of service to the University.

Condolences also are extended to the following employees:

• **Anita M. Anton**, billing representative in dermatology, on the death of her mother, Ann Gasparovic, Dec. 12.

• **Frederic C. Schneeberger**, associate professor of engineering technology, on the death of his wife, Dorothy Schneeberger, Dec. 3.

• **Dr. Gregory D. Launius**, assistant professor of radiology, on the death of his father, Delmer Dwain Launius, Dec. 3.

• **Michael James DeFlurin**, maintenance worker for general maintenance, on the death of his father, Joseph DeFlurin, Dec. 2.

• **Dr. Gary J. Northam**, associate professor of aviation sciences, on the death of his father, John H. Northam, Nov. 12.

• **Kathy Hagedorn**, vice president for human resources, on the death of her father, John P. Kelleher Jr., Oct. 30.

• **Robin E. Rodriguez**, employee relations manager, on the death of her mother, Delores Anselman, Oct. 15.

• **Sandra L. Morgan-Cox**, senior human resources generalist, on the death of her father, Jonnie German, Oct. 9.

• **Dr. Joan K. Carter**, associate dean at the School of Nursing, on the death of her daughter, Annie Mersmann, Sept. 30.

• **Jeffrey E. Lewis, J.D.**, dean of the School of Law, on the death of his mother, Lois Lewis, Sept. 28.

• **Howard Harvey**, research technician in the School of Public Health, on the death of his mother Susie L. Harvey, Sept. 27.

• **Cheryl A. Poynter**, research technician in the School of Public Health, on the death of her mother, Eloise Hughes, Sept. 27.

• **Dr. Dorothy A. Cooke**, associate professor in the School of Nursing, on the death of her father, Bernard P. McDonnell Sr., Sept. 23.

• **Dr. Michael Burks**, director of academic information technology services, on the death of his son, Connor M. Burks, Sept. 21.

• **Rachel M. Philippone**, master's candidacy advisor in the Graduate School, on the death of her father, Richard Miller, Sept. 15.

• **Sheila A. Leander**, adjunct faculty in the School of Nursing, on the death of her father, Edward Adams, Sept. 13.

• **Stephanie A. Jones**, technology center associate in the School of Law, on the death of her father, Leonard R. Jones, Aug. 19.

• **Teresa L. Dunleavy**, senior education coordinator in the Saint Louis University Cancer Center, on the death of her mother, Jeannette Marshall, Aug. 9.

COMMITTED TO THE COMMUNITY

Nine SLU women were honored at the YWCA Metropolitan Leader Lunch in December for their contributions to the community. The winners were sponsored by the Women's Commission. Front row, from left: Mary Beth Erickson, Laurie Boice, Janell Kiel Nelson, Linda Wardhammar. Top row, from left: Dr. Dorothy James, Dr. Karen Frank Barney, Kathleen Parvis, Jothika Manepalli, M.D. Not pictured: Monica Ultmann, M.D. (Submitted photo)



Dr. Reinhard Andress (modern and classical languages) conducted a one-week workshop on "Deutschsprachige Schriftsteller Innen leben und schreiben im Exil, 1933-1945" at the Casa de Estudios Germânicos, an institute connected to the Universidade Federal do Pará in Belém, Brazil.

Dr. William Banks (internal medicine/geriatrics, pharmacological and physiological science) presented the keynote address at the University of Missouri School of Medicine reunion.

Michael D. Barber, S.J., (philosophy) was part of a panel discussing Eduardo Mendieta's book *The Adventures of Transcendental Philosophy* at the annual meeting of the Society for Phenomenology and Existential Philosophy in Memphis, Tenn.

Dr. Pamela Cacchione (nursing) received the Missouri Association of Homes for the Aging 2004 Distinguished Service Award at MoAHA's annual awards ceremony at the Lodge of the Lake of Ozarks. The award recognizes an individual, researcher, educator, facility, institution of higher learning or association that has made an outstanding contribution toward the welfare of older persons in areas such as research, education, communications and public policy.



Cacchione

Dr. Lionel Cuillé (modern and classical languages) presented "Tocqueville et les nouveaux réactionnaires" at the 30th annual Nineteenth-Century French Studies Colloquium at Washington University in St. Louis.

Dr. Marty Ferman (aerospace and mechanical engineering) was the lead author of "Experiments with Tangential Blowing to Reduce Buffet Response on an F-15 Model" in the July-August issue of *AIAA Journal of Aircraft*. Ferman also was co-author of "Coupled Thermal-Elastic Large Amplitude Vibrations of Beams Subjected to Thermal and Mechanical Loadings" published in the proceedings of the International Conference on Nonlinear Problems in Aviation and Aerospace, Mathematical Problems in Engineering and Aerospace Sciences in Timisora, Romania.

Dr. Judith Gibbons (psychology and international studies) attended the First Regional Congress of the Interamerican Society for Psychology in Guatemala City. She presented the papers "The Ideals of Urban Guatemalan Adolescents" and "Machismo, Attitudes Toward Gender Roles,

and Beliefs About Adoption," which were co-authored with graduate students Samantha Wilson and Christine Rufener.

Dr. John Hamilton (management and management information systems) was an invited speaker at the AIDC100 Forum on Truth in Technologies, held at Stony Brook University.

Dr. Sandy Hamrick (modern and classical languages) presented "When the 'Barbares' Become the 'Civilisés' and the 'Civilisés' Become the 'Barbares'" at the German Institute for the History of Art in Paris. Hamrick also chaired a session on "Théophile Gautier and the Theatre" at the International Conference on Gautier Studies, hosted by the Université de Montpellier.

Christine Froechtenigt Harper (University archives, Pius XII Memorial Library) wrote "The Water Wizard: John F. Wixford and the Purification of the St. Louis Water Supply in 1904," which was published in the October 2004 *Missouri Historical Review*. Harper also attended the fall meeting of the Midwest Archives Conference in Des Moines. In addition, Harper contributed the biography of Missouri-born artist Dorothy Hart Drew to the AskART Web site.

Ann Hayes (physical therapy) presented a continuing education program to St. Louis physical therapy assistants on "Essentials of Lower Limb Prosthetics."

Dr. Joseph Heathcott (American studies) presented "Public Housing and the Search for Racial Justice in America" at the Massachusetts Historical Society in Boston. Heathcott also presented "Architecture and the Politics of Memory: Housing Projects and the Decline of the American Public Sphere" at the Society for Architectural Historians' annual meeting in Providence, R.I.

Dr. James Hitchcock (history) published a two-volume work, *The Supreme Court and Religion in American Life*.

Dr. Cornelia Horn (theological studies) presented "Children and Violence in Syriac Sources" at the IX Symposium Syriacum held at USEK — Université Saint-Esprit de Kaslik, in Kaslik, Lebanon. Horn also presented "Reconstructing Women's History from Christian Arabic Sources: The Evidence of the History of the Patriarchs of the Coptic Church" at the VII Congrès International des Études Arabes Chrétiennes held at Université Saint-Joseph de Beyrouth in Beirut, Lebanon. Horn was a guest of Notre Dame University in Louaize, Lebanon.

William Hubble (nuclear medicine technology) has been appointed to represent the Society of Nuclear Medicine Technologists Section at the National Consortium on Health Science and Technology

Education until December 2005. Hubble also completed the Coalition for Allied Health Leadership Program in Washington, D.C.

Daniel Hulsebosch (law)



Hulsebosch

received the Surrency Prize from the American Society for Legal History for his article "The Ancient Constitution and the Expanding Empire: Sir Edward Coke's British Jurisprudence" in volume 21 of the *Law and History Review*.

Dr. Teresa Johnson (modern and classical languages) presented "Desarrollo lingüístico infantil: comprensión y uso de ser y estar en niños mexicanos," at the IV Congreso Internacional sobre la Adquisición de las Lenguas del Estado held in Salamanca, Spain. Also, Johnson received "La Orden de los Descubridores" by Sigma Delta Pi for her "exceptional and meritorious service in the fields of Hispanic scholarship, the teaching of Spanish and the promotion of good relations between English and Spanish speaking countries."

Dr. James Korn (psychology) received a presidential citation from division two of the American Psychological Association for significant career contributions to the Society for the Teaching of Psychology.

Dr. Bruce Kowert (chemistry) presented "ESR Studies of a Reorienting Nickel Complex" at the 39th Midwest Regional meeting of the American Chemical Society in Manhattan, Kan.

Dr. Oscar Lopez (modern and classical languages) authored "Aforemas" in *Mascaluma*, a Colombian peer-reviewed literary journal that publishes poetry, narrative and essays.

Carol Lunning (career services) and **Kathy Day** (MBA and graduate business programs) presented research about "Employer Preferences and Expectations of Students During the Job Search Process" at the Midwest Association of Colleges and Employers 2004 Conference in Oak Brook, Ill. The research was funded by the Midwest ACE Steele Grant.

Dr. Thomas F. Madden (history) published *Crusades: The Illustrated History*.

Dr. Katherine C. MacKinnon (sociology and criminal justice) presented "Individual Variation in the Appearance of Social Behaviors in Infant Capuchin Monkeys (Cebus Capucinus) in Costa Rica" at the Congress of the International Primatological Society in Turin, Italy. MacKinnon also attended an invitation-only pre-congress

workshop in Radicondoli, Italy. The workshop included top researchers from across the globe.

Dr. Richard Mayden (biology) attended the International Congress of Zoology in Beijing, China, where he presented the keynote address on the philosophical and empirical aspects of biological species. Mayden also met with scientists about two large international research initiatives funded by the National Science Foundation.

Dr. Ana Montero (modern and classical languages) presented "Reconstrucción de un ideal de espiritualidad en los hombres del saber de la corte de Alfonso X," at the Congreso Internacional: X Jornadas Medievales at the Universidad Nacional Autónoma de México in Mexico City.

Dr. Janet Y. Murray (Boeing Institute of International Business) co-authored the paper "Strategic Alliance-Based Sourcing and Market Performance: Evidence from Foreign Firms Operating in China," which has been accepted for publication by the *Journal of International Business Studies*.

Dr. John Pauly (communication) discussed "Recovering the Global as a Cultural Concept," as part of a panel on "Globalization of Media Policy and Culture" at the Global Fusion 2004 conference, sponsored by Southern Illinois University-Carbondale. In addition, Pauly was the moderator for a panel on "Extraordinary Vote-Getting Measures" sponsored by the Press Club of Metropolitan St. Louis.

Dr. Jean-Louis Pautrot (modern and classical languages) edited a special issue of the Canadian journal *Études Françaises* that was devoted to French Writer Pascal Ouguignard. Pautrot contributed an introduction to the issue, an interview with Ouguignard and a bibliography. In addition, Pautrot wrote "Le Jazz Français en Grande Forme" for the spring issue of *Nottingham French Studies*.



Reinking

Dr. Mark Reinking (physical therapy) has been appointed a member of the American Board for Physical Therapy Specialties.

Michael Rota (philosophy, graduate student) published "Substance and Artifact in Thomas Aquinas" in the July issue of *History of Philosophy Quarterly*.

Dr. Darina Sargeant (physical therapy) was conference program chair for the American Physical Therapy Association's National Clinical Education Conference. Sargeant also presented

"Teaching Spirituality/Culture in the Classroom and Clinic."

Dr. Paul Shore (educational studies and history) published research online about rare books and manuscripts from a library



Smart

in Nizhny Novgorod, Russia. **Dr. Annie Smart** (modern and classical languages) was a key member of the organizing committee that brought the American Society for Eighteenth-Century Studies to St. Louis for a conference. Smart organized panels on "Re-Reading Rousseau I" and "Re-Reading Rousseau II." She also presented "Re-Reading Femininity in the EMILE."

Taki Suto (philosophy, graduate student) published "Virtue and Knowledge: Connatural Knowledge According to Thomas Aquinas" in *The Review of Metaphysics* 58.

Elaine Wilder (physical therapy) presented "Physical Therapy for Pelvic Floor Dysfunction" for the American Physical Therapy Association.

Dr. Gregory H. Wolf (modern and classical languages) served as resident director of the six-week German Culture and Language Program in Mayen, Germany. While there, Wolf was interviewed by newspapers and television stations about language learning in the United States as well as American study abroad programs in Germany.

Dr. Brent M. Znosko (chemistry) co-authored the paper "Factors Affecting Thermodynamic Stabilities of RNA 3x3 Internal Loops," which was published in the journal *Biochemistry*.

SLUCare received national recognition at the IDX National Users Conference in Boston.

Susan Warren (SLUCare practice management operations) created and presented several IDX system customizations used within the SLUCare practice sites. IDX software is used by most major medical school faculty practices throughout the nation for managing patient schedules and billing.

Several members of the history department participated in the Sixteenth Century Studies Conference in Toronto. **Dr. Philip Gavitt** presented "Dominican Humanism at the Council of Trent: Bishop Nacchianti of Chioggia." **Dr. Charles Parker** presented "Paying the Priest, Feeding the Poor: Patronage and Poor Relief in Seventeenth-Century Dutch Catholic Communities." **Patrick O'Banion** (graduate student) presented "A Priest Who Appears Good: Confessor's Manuals and the Construction of Clerical Identity in Early Modern Spain."



On the Move

Congratulations to the following employees receiving transfers or promotions:

- **Susan Agnew**, to licensed practical nurse for the department of obstetrics, gynecology and women's health
- **Kara Alberti**, to patient account representative for practice management operations
- **Allison Babka Burney**, to editor of internal communications for marketing and communications
- **Elizabeth Ballman**, to grant accountant for the office of the controller
- **Leslie Bilodeau**, to senior administrative assistant for business and finance
- **Jennifer Boyce**, to research assistant for the School of Public Health
- **Teresa Burke**, to research nurse for SoLUtions
- **Jean Bono**, to customer service representative for information technology services
- **Jessica Campbell**, to senior patient coordinator for the Center for Advanced Dental Education
- **Sarah Caravia**, to coordinator for undergraduate career resources at the John Cook School of Business
- **Amy Clark**, to research assistant for biochemistry and microbiology
- **LaDonna Davis**, to financial services coordinator for the office of the controller
- **Thomas Day**, to director of special projects for development and University relations
- **Sharon DeBolt**, to business manager for the dean's office of Parks College of Engineering, Aviation and Technology
- **Christopher Duke**, to field supervisor for the department of public safety
- **Megan Espenschied**, to research assistant for pharmacological and physiological science
- **Mindy Fenton**, to accountant for the office of the controller
- **Thomas Goodwin**, to flight instructor for Parks College of Engineering, Aviation and Technology
- **Denise Johnson**, to coordinator for medical administration at the School of Medicine
- **Ryan Kanive**, to flight instructor for Parks College of Engineering, Aviation and Technology
- **Kristine Kelly**, to associate director for alumni relations
- **Peggy Kruse**, to senior financial services coordinator for the office of the controller
- **Marquita May**, to patient coordinator for the Saint Louis University Cancer Center
- **Jackson McDaniel**, to office assistant for the School of Public Health
- **Shirley McMillian**, to education specialist for student educational services
- **Joe Monte**, to research assistant for internal medicine/infectious diseases
- **Michael Moore**, to network architect for information technology services
- **Jamie Morrison**, to medical records clerk in medical records
- **Helen Murphy**, to senior patient coordinator for dermatology
- **My Pham**, to building service worker for student development
- **Joan Siegner**, to research nurse for internal medicine/infectious diseases
- **Jena Stewart**, to nurse supervisor for cardiology
- **Melissa Westwood**, to administrative secretary for internal medicine
- **Brian Willett**, to library associate for Pius XII Memorial Library
- **Dawn Young**, to senior patient coordinator for the Center for Advanced Dental Education



HONORED FOR SELFLESSNESS: (Clockwise from bottom left) Christy Finsel, Dr. Tim Fete and J.J. Mueller, S.J., were recognized by Lisa Lazio, C.S.J., chair of the Center for Counseling and Family Therapy advisory board, at the Garanzini Service Award ceremony in November. The award is given to those who exemplify faith in God through service to others, promote justice, encourage people to grow wholly and improve the quality of life for the marginalized. Fete received the special John K. DiTiberio Award for showing care and commitment to students in the helping and healing professions. Not pictured are Garanzini Award winners Pearl Campbell and Greg Stephen. (Photo by Allison Babka Burney)

Timekeeping

from page 1

and student workers now document their time by computer, which automatically routes the time sheets for approval. Those who use time clocks continue to do so.

Training for using the new timekeeping system has already begun, but human resources also has compiled a list of frequently asked questions, available at www.slu.edu/readstory/newslink/5057. The FAQ explains how the timekeeping process works and what information must be entered for hourly and exempt employees.

Hagedorn notes that it is especially important that biweekly employees learn to use the new timekeeping process because, as with the current system, they cannot be paid if their time is not entered and approved. For the first few pay periods, timekeepers/approvers will receive group e-mails to remind them about payroll deadlines.

Employees who currently use a time clock, however, won't see any difference because SLU's time clocks are linked to the new system and record time automatically.

The new system offers other benefits as well. For example, employees can access their leave information in "real time," which means they won't have to wait until the end of a pay period for a report to be generated.

Training sessions are ongoing for individuals who enter their time, as well as for those designated to approve time for every department. To find out more or to schedule time entry or approver training, e-mail training@slu.edu or call professional and organizational development at 977-2385.

This month, there are walk-in sessions on both ends of campus where payroll and human resources staff members will assist employees who experience any difficulty with entering or approving time.

Employees also may drop by if they just want someone to make sure they're completing the process correctly. A list of times and locations for these sessions is available in the box at right. If you have difficulty entering or approving time, contact the ITS Customer Service Center at 977-4000 or helpdesk@slu.edu.

Some common questions

What information will I need to enter my time via the Web?

You will need to know your Banner identification number and your WebPRO pin number. Your Banner identification number is printed on all newly obtained Saint Louis University ID cards.

What if I enter the wrong information on the time sheet?

If the time sheet has not been submitted, you can use the delete button near the bottom of the screen to remove entries; after that, enter the correct information. Be sure to save changes.

If the time sheet has been submitted for approval, contact the department time approver who can make changes and add comments to the time sheet prior to submission to payroll.

What if I forget to submit my time sheet?

The system will not produce a paycheck for biweekly employees if the Web time sheet is not submitted or approved before the system deadline. If you forget to submit your time sheet while you are out of the office, you should access the time sheet from a computer with Web access or contact your departmental approver, who will coordinate with payroll to have your time entered and submitted.

What if I am out of the office and cannot access the Web time entry system?

You will be able to enter time in the Web time sheet after you return to work, provided the pay period has not ended. If your time sheet already has been submitted for approval, contact your approver who can arrange to have the time entered for you.

For more frequently asked questions about the new online timekeeping system, visit www.slu.edu/readstory/newslink/5057.

Need help? Walk on in

Biweekly Web Time Entry

Friday, Jan. 28
8 a.m. - 4:30 p.m.
Des Peres Hall
Room 207
School of Nursing
Suite 114
Salus Center
Room 631

Monday, Jan. 31
8 - 10 a.m.
Des Peres Hall
Room 108
School of Nursing
Suite 114
Salus Center
Room 631

Biweekly Web Approval

Monday, Jan. 31
10 a.m. - 3 p.m.
Des Peres Hall
Room 108
School of Nursing
Suite 114
Salus Center
Room 631

Monthly Exempt Web Time Entry

Tuesday, Jan. 18
8 a.m. - 4:30 p.m.
Salus Center
Room 631

Wednesday, Jan. 19
8 - 10 a.m.
Des Peres Hall
Room 108
School of Nursing
Suite 114
Salus Center, Room 631

Monthly Web and Department Time Approval

Wednesday, Jan. 19
10 a.m. - 4 p.m.
Des Peres Hall
Room 108
School of Nursing
Suite 114
Salus Center
Room 631



Inquiring Photographer

What is your favorite winter memory?

“The 1982 blizzard, because I was out building forts. Also, there was a lot of thunder and lightning with the snow.”

— **Tony Gallini**, coordinator of recruitment and marketing, School for Professional Studies



“My kids and I always make a trip to Branson, Mo., and Silver Dollar City because we always like to see the lights and everything that they do to celebrate Christmas and the holidays. It’s become a family tradition. We also collect nutcrackers and have 40-50 that we display every year.”

— **Elaine Wilder**, associate professor, physical therapy



“When my son was born Jan. 1, 1970. That was my best Christmas present.”

— **L.C. Fortenberry**, public safety officer, public safety



“My favorite memory is deep, deep snow, 15 inches or more. I remember trying to get to my finals through the deep snow, thinking I had to be there. Of course, they were canceled and moved back, but I still made it.”

— **Marian Linck**, administrative secretary, nutrition and dietetics



“When I was younger, we had a winter soccer league. The fields were as hard as a rock. Even though it was freezing, you refused to wear anything on your legs.”

— **Janet Oberle**, director of compliance, athletics



Couple leaves \$5.6 million gift to establish humanities scholarship fund at SLU

Saint Louis University officials recently accepted a \$5.6 million gift that will be used to establish a scholarship fund in the humanities. It is the largest gift for the humanities in SLU’s history.

University President Lawrence Biondi, S.J., was among the SLU officials on hand in December to accept the the initial check for \$4 million, which realized the final request of Max and Barbara Lubin, a St. Louis couple who believed in helping others and in the value of education.

Barbara Lubin had been a friend of SLU since the early 1980s. The Lubins had no children and wanted to offer young people a chance to attend college.

The additional \$1.6 gift from the Lubins was announced in January.

“It’s wonderful that members of the St. Louis community – not necessarily SLU alumni – think so favorably of our university that even though they didn’t attend, they still support our vision to such a great extent,” said Kent LeVan, director of planned giving.

The bequest benefits the Campaign for Saint Louis University, which has a goal of raising at least \$300 million for students, faculty, science and technology, centers of excellence, campus life and annual support. So far, the campaign has raised more than \$227 million.

“With approximately \$70 million remaining to surpass our \$300 million campaign goal, large gifts such as the Lubin bequest are terrific,” said Don Whelan, vice president for development and University relations. “Each time a generous benefactor makes a major commitment like this, we come even closer to our goal. More importantly, though, this generosity helps sustain the University’s overall momentum and provides very tangible benefits.”

To find out more about the campaign, visit the campaign Web site at campaign.slu.edu.



Part of an ongoing series



HELP FOR HUMANITIES: University Provost Dr. Joseph Weixlmann (center) and University President Lawrence Biondi, S.J., (right) accept the first \$4 million during a check presentation in December. An additional \$1.6 million from Max and Barbara Lubin was announced in January. The bequest from the Lubins will help fund scholarships in the humanities. (Photo by Allison Babka Burney)

Schools

from page 1

nutrition, nuclear medicine technology, physician assistant education, occupational science and occupational therapy, and physical therapy.

While the schools have combined into a college configuration, subsequent integration of the “nuts and bolts” of the two schools will occur during the next year or two.

Dr. Joan Hrubetz, dean of nursing, retired in December.

“By incorporating the School of Nursing with the allied health programs into one college, we are putting a primary focus on patient care and support, rather than upon disciplinary care and development,” Royeen said. “This is a radical change in health professions education that will take time to enact but will benefit students by having them well prepared to work in teams and interprofessionally.”

The combined school has an undergraduate enrollment of 951 and postbaccalaureate professional and graduate enrollment of 569. The Doisy College offers nationally ranked and recognized programs in nursing, occupational therapy, physi-

cal therapy and physician assistant education and will continue to offer innovative and sought-after degrees such as a B.S. in investigative and medical sciences, an accelerated B.S. in nursing, an accelerated B.S. in health information, a master’s degree in physician assistant education as well as a B.S. in occupational science, a master’s degree in occupational therapy, and a new doctor of physical therapy degree.

Also continuing will be the college’s health information management program in conjunction with the School of Public Health, the only one in the nation to offer a five-year degree option that culminates with a master’s degree in health administration.

The college is named after Edward A. Doisy, M.D., and his wife, Margaret Doisy. Edward Doisy is a former chairman of the biochemistry department at the School of Medicine who was awarded the 1943 Nobel Prize in Medicine for isolating Vitamin K and determining its constitution and synthesis.