



# CAMPUS SUSTAINABILITY

# MESSAGE FROM THE CHIEF SUSTAINABILITY OFFICER

Michael Lucido

*Associate Vice President for Facilities Services*

Welcome to this year's edition of the Campus Sustainability Report. Although I am not new to the University, I am taking on a new role and responsibility in becoming Saint Louis University's new Chief Sustainability Officer and Associate Vice President for Facilities Services. In this new role, I am still learning and exploring what sustainability should look like at the University.

An important part of sustainability on campus is STARS, the Sustainability Tracking, Assessment & Rating System created by AASHE, the Association for the Advancement of Sustainability in Higher Education. The categories in STARS provide a guiding framework for our decisions and goals toward sustainability at SLU. We are proud this year to celebrate the achievement of a higher rating in STARS based on our last submittal, which increased our rating from bronze to silver.

I am very proud of the accomplishments that have helped us earn this increased rating. As a University, we have made great strides in understanding our energy use and working to reduce our carbon footprint. As a division, Facilities Services has made a strategic decision to include environmental resource optimization as part of our strategic plan. Last fall we completed our first greenhouse gas inventory (p. 24), and this spring we installed solar arrays on nine campus buildings (p. 23). We continue to see commitment from students, faculty, and staff in practicing social sustainability through service events and donation drives (p. 14) and in practicing responsible use of resources on campus (p. 31).

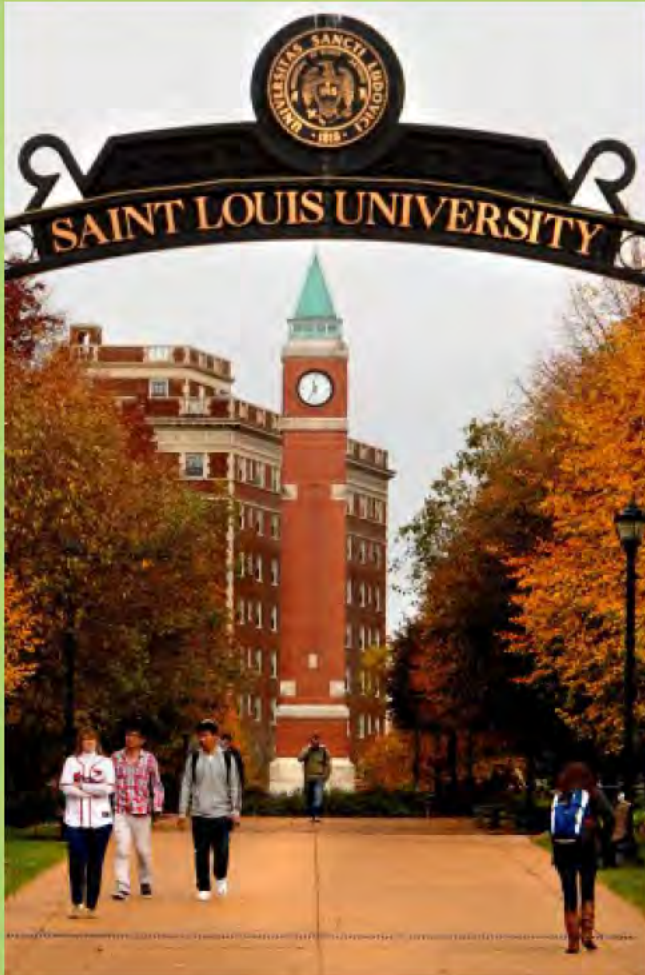
As the Pope stated in his recent encyclical on the environment, "The climate is a common good, belonging to all and meant for all." We will strive to ensure that we respect the environment in all that we do. As you read through this year's report, think about how to maintain even greater levels of sustainability and how we might be able to strive further to live out this mission.

# TABLE OF CONTENTS

---

Social Sustainability.....	5
Academics & Research.....	10
Campus Engagement.....	14
Disposable Water Bottle Pledge.....	19
Energy, Emissions, & Transportation.....	21
Dining Services.....	27
Waste.....	31
Grounds.....	34
Recognition.....	35
Sustainability Map.....	37

# INTRODUCTION



The annual Campus Sustainability Report provides an opportunity for the Saint Louis University (SLU) community to reflect upon the growth and development of sustainability on campus over the past year. Sustainability creates space in the campus community to engage in decision making based on dimensions of social justice, environmental stewardship, and economic accountability. As such, sustainability complements the University's mission of pursuing truth, servicing humanity, and seeking excellence in leadership in understanding God's creation. With these University values, SLU has an inherent aptitude toward sustainability of all dimensions.

Sustainability on campus is still new in many ways. The Department of Sustainability & Benchmarking was created in 2013, and the Center for Sustainability was created in 2010. With this infrastructure in place at the University, we have built a strong opportunity for campus sustainability to flourish.

This report features events and achievements which occurred during FY15 (July 1, 2014 – June 30, 2015). For further information about sustainability at SLU, please visit [greenbilliken.slu.edu](http://greenbilliken.slu.edu). To read past annual reports, please visit the Reports link on the website.

# THESE GROUPS CONTRIBUTE TO SUSTAINABILITY ON CAMPUS

## THE SUSTAINABILITY ADVISORY COUNCIL

is a council of high level administrators and representatives from faculty, staff, and students whose aim is to support the University in the development and implementation of sustainability at SLU.

## THE ENERGY AND UTILITY STRATEGIES ACTION TEAM

is a strategic action team of Facilities Services employees who strategize energy saving initiatives and prioritize energy and utility projects for the University.

## THE OFFICE OF SUSTAINABILITY AND BENCHMARKING

is a department of 5 individuals: 1 director, 1 project analyst, 2 graduate assistants, and 1 graphic design intern who promote sustainability engagement and operations on campus.

## THE CENTER FOR SUSTAINABILITY

is an academic and research center offering graduate degrees in topics related to sustainability.

## STUDENT GOVERNMENT ASSOCIATION

is a resource and advocacy body for the students at SLU.

## VARIOUS STUDENT GROUPS

are dedicated to sustainability-related topics, including Just Earth, Habitat for Humanity, and Global Brigades.

# SOCIAL SUSTAINABILITY

84%

of SLU students  
volunteer at least  
once a year

31

student groups on campus are  
dedicated to diversity and  
social justice

6

campus groups support  
the homeless in  
St. Louis



The Mission of Saint Louis University is the pursuit of truth for the greater glory of God and for the service of humanity. In line with Jesuit values, the University aims to alleviate ignorance, poverty, injustice, and hunger; to encourage compassionate care to the ill and needy; to improve the quality of life for all persons; and to embrace all racial, ethnic, and religious backgrounds and beliefs. These aims are achieved not only through an open and active academic environment, but also through the helping hands and giving hearts of the SLU community.

# SLU lives up to its mission of service for others:



SLU was ranked 4th best school in the country for community service by Washington Monthly Magazine, making the 4th consecutive year SLU has been ranked in the top 5.



SLU was placed on the President's Higher Education Community Service Honor Roll for the 7th consecutive year. This is the highest federal recognition a school can achieve for its commitment to service learning and community engagement.

# A CALLING WITH A HIGHER PURPOSE

## The Papal Encyclical on Environmental Stewardship

---

The Pope's recent encyclical, "Laudato Si: On Care for Our Common Home" (or "Praise Be to You"), creates conversation between the deep traditions of the Catholic Church and ideals from secular disciplines. The encyclical focuses on the environment as a connecting force among every human community. It reflects on the experiences of the church as the effects of climate change become increasingly dangerous to ignore. Pope Francis' encyclical states that climate change is a threat, and mainly "a result of human activity." The Pope addresses how "The earth herself, burdened and laid waste, is among the most abandoned and maltreated of our poor."

As stated in the encyclical, "Each community can take from the bounty of the earth whatever it needs for subsistence, but it also has the duty to protect the earth and to ensure its fruitfulness for coming generations."

As a historic and prestigious Catholic, Jesuit research university, SLU is committed to the values discussed by the Pope with a longstanding commitment to the community. Repairing the planet and improving the lives of others through environmentally-friendly practices, policies, and programs aligns with the institution's call to serve a higher purpose by contributing to the greater good.

Climate change and growing concerns about the responsible use of the planet's resources for future generations continue to make headlines; this is even more so as Pope Francis has taken a strong stand on the issue. The University is no stranger to these ideals and continues to foster a culture of social justice and increased efforts in reducing our environmental impacts.

A variety of resources are available through the wider Jesuit community to learn more about the encyclical and spiritual reflections connected to sustainability and "ecological citizenship":

Catholic Climate Covenant: <http://www.catholicclimatecovenant.org/>

Eco Jesuit: <http://www.ecojesuit.com/>

Jesuit Task Force Report on Ecology: <http://www.sjweb.info/documents/sjs/pjnew/PJ106ENG.pdf>

Ignatian Solidarity Network: <http://ignatiansolidarity.net/>





## SLU'S OATH OF INCLUSION

The Oath of Inclusion was launched in 2011 as a means to create an expectation for SLU students to promote an inclusive and accepting campus. Through the Oath, students are expected to embrace all people regardless of race, class, gender, sexual orientation, religion, or ability status. Translated in 6 languages, the document highlights SLU's community as being diverse and vibrant. It recognizes the "inherent dignity of each person" and encourages individuals to allow personal worldviews to remain challenged.



We, as students, form a diverse and vibrant university community.

We do not enter into this community by proximity, but by virtue of a shared Jesuit vision - to pursue higher truths, obtain greater knowledge and strive for a better world. In this endeavor, we do not succeed by our individual ambitions, but by our discovery of each other.

We find higher truths when we seek to understand the complexity of our neighbors' identities, we obtain greater knowledge when we consider the perspectives of our fellow students and we begin to strive for a better world when we build a stronger community.

As a student and a member of the SLU community, I will live by this oath.

I will embrace people for the diversity of their identities, creating a community inclusive of race, ethnicity, sex, age, ability, faith, orientation, gender, class and ideology.

I will challenge my worldview through education inside and outside the classroom.

I will show that I am proud to be a Billiken by enriching the culture of our University.

I will foster a community that welcomes all by recognizing the inherent dignity of each person.

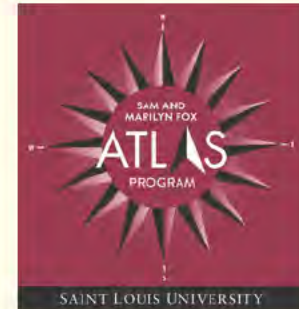
I will work for social justice in the Saint Louis community and beyond.

This is the SLU I believe in.  
This is the community I am building.  
This is our SLU.

# ATLAS WEEK

## Simple Steps: Global Change Starts with You

The Fifteenth Annual Sam and Marilyn Fox Atlas Week program was held in April 2015. The Atlas Program aims to increase awareness of global issues confronting us today with hopes to promote discussion and inspire informed action. The week of events provides an insight on how individuals can act as global citizens and contribute to a better life for all people. Main events of this year's ATLAS Week included keynote speaker Derreck Kayongo, a humanitarian, environmentalist, business visionary, and founder of the Global Soap Project, as well as the Annual Interfaith Prayer Service, the Parade of Nations, and the Billiken World Festival.



# CLOCK TOWER ACCORDS

Sustainability has three equally important pillars: environmental stewardship, social equity, and economic prosperity. Peaceful demonstrations that occurred around the clock tower this past year raised awareness of racial inequality in the region, an important social justice issue. The demonstrations and the dialogue surrounding these events brought to light the idea that living more sustainably is a privilege often reserved for those whose basic needs have already been met. When basic needs are not met or are at a high risk of not being met, it is less likely that people will have the chance to educate themselves about practices such as recycling and composting. When we work toward racial equality and toward the abolition of racialized poverty, we work toward the opportunity for all people to live sustainably.



# ACADEMICS & RESEARCH

Sustainability in academics at SLU has long been incorporated in various curricula. SLU students and faculty can focus education, learning, and research directly on sustainability topics that incorporate the environment, equality, and economy through the Center for Sustainability and various other academic centers and departments on campus.



# MAJOR ACADEMIC BODIES CONTRIBUTING TO SUSTAINABILITY AT SLU

---

**THE CENTER FOR SUSTAINABILITY** offers graduate programs in Sustainability, Urban Planning & Design, and Geographic Information Systems (GIS). Through educational programming and research, the Center achieves its mission of creating a more sustainable world through interdisciplinary education, research, and community engagement.

**THE DEPARTMENT OF NUTRITION & DIETETICS** offers degrees in nutrition and dietetics science. Their aim is to examine how we eat and how we can better maximize our health with better dietary choices. They run the campus food garden, a farm to table food stand, and a sustainable, local, and healthy food cafe called Fresh Gatherings.

**THE CENTER FOR ENVIRONMENTAL SCIENCES** provides opportunities in interdisciplinary research, funding, teaching, education, and outreach. Their mission is to create a research and educational environment which examines interactions of the solid earth, hydrosphere, atmosphere, biosphere, and how humans interact with these systems.

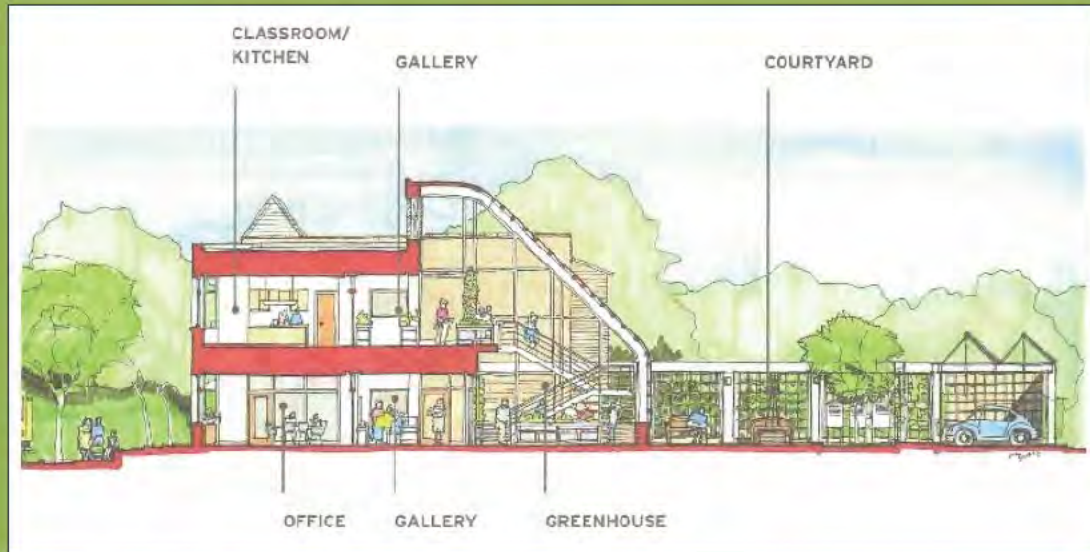
**THE DEPARTMENT OF EARTH AND ATMOSPHERIC SCIENCES** offers programs in Environmental Science, Environmental Studies, Geology, Geophysics, and Meteorology, as well as a graduate certificate in Remote Sensing and Geographic Information Systems (GIS). They have a strong tradition of classroom and field-based instruction.

# SUSTAINABLE CHILDREN'S GREENHOUSE CREATED BY SLU FACULTY

Donald Stump, Principal Investigator and Director of the Micah Program, is leading a project to design and develop an education and outreach greenhouse near SLU with a team of faculty from 9 departments and centers on campus.

The sustainably-designed greenhouse will be a place to teach children in grades 3-8 about growing, nutrition, science, technology, and the environment. It will also provide fresh food to people in need living in food deserts near the University.

The aim is to provide a 'living classroom' for economically and racially diverse schools near the Missouri Botanical Garden. The proposed educational programming includes school field trips, educational videos streamed from the facility, and seed projects in science and nutrition built at the center and supplied to teachers for use in classrooms.



Proposed Greenhouse Design

Some features of the greenhouse include solar generation of electricity, heat generation in external composting beds, aquaponic production of fish and produce, roof-top growing, road-margin food production, and an ozone testing and weather station.

The project is still searching for funding, so contact Donald at [stump@slu.edu](mailto:stump@slu.edu) to provide your support.

# FEATURED RESEARCH

Damon Hall, Ph. D, assistant professor at the Center for Sustainability, and Gerardo Camilo, Ph. D, associate professor of biology, are partnering in the research project **"Social and Ecological Drivers of Pollinator Health."**

With declining populations of insect pollinators in the St. Louis area and worldwide, this project aims to understand the relationship between pollinator species' health and urban land use decisions.

This research can support the creation of effective programs to support the health and habitat of pollinators.

Tim Eichler, Ph.D., assistant professor of earth and atmospheric sciences, is SLU's principal investigator on the research project **"The Missouri Transect: Climate, Plants, and Community."**

Funded by a \$20 million grant from the National Science Foundation, the project is being conducted by a consortium of Missouri universities and research institutions. The project focuses on studying the impacts of climate change on Missouri agriculture, such as plant stress and soil changes.

Eichler reports that agriculture in Missouri may suffer due to the effects of climate change. These include variations in drought, flooding, and storm patterns.

Fernando Serrano, Ph.D., assistant professor in the Department of Environmental and Occupational Health, received a 2014 Jesuit Conference Social Analysis and Action Research Grant to analyze **health and well-being in Honduras communities as affected by nearby mining activities.**

The focus of his research is on water quality and availability, which are significantly impacted by mining activities.

# CAMPUS ENGAGEMENT

From volunteering to education and learning to changing daily actions and habits, the SLU community engages in a variety of events and activities every year that promote sustainability both on and off campus.



5,524 pairs of shoes were collected during the Battle for the Boot shoe drive.



Nearly 10,850 lbs. of item and donations were collected in the spring Trash to Treasure donations drive during student move-out.



Over 4,000 people from the SLU community volunteered at Make a Difference Day in 2014.

# ANNUAL EVENTS

---

## BATTLE FOR THE BOOT

This shoe collection occurs during the spring semester and is sponsored by Solea Water. Money collected from selling donated shoes is used to install clean water infrastructure in developing nations.

## TRASH TO TREASURE

This donation drive occurs at the end of the fall and spring semesters during move-out. Clothing, furniture, unopened food, and other items can be donated to local charities.

## SLUSTAINABILITY WEEK

Occurring in October, SLUustainability Week celebrates sustainability with various events. These include **Make a Difference Day**, SLU's largest day of volunteering throughout the year, **The Cannonball Picnic**, a zero-waste event for faculty and staff, and the **Sustainability Expo**, an opportunity to meet with community partners dedicated to sustainability-related causes.

## RECYCLEMANIA

This intercollegiate recycling competition spans the months of February and March. RecycleMania features the **Green Game**, a recycling awareness event, and the **E-Waste Drive & ShredMania**, collections of electronic waste and paper for shredding to be recycled.



# RECYCLEMANIA RESULTS

RecycleMania is an annual 8-week intercollegiate competition that raises awareness for recycling programs and sustainability on campuses. 2015 marked SLU's fifth year participating in the competition, which ran from Feb. 2 to March 29.

SLU collected:

- 270,000 pounds of single-stream recycling
- 27,000 pounds of paper in ShredMania
- 127,000 pounds of electronics in the e-waste drive

A grand total of over 424,000 pounds of waste was diverted from landfills during SLU RecycleMania events.



# BILLIKEN BASKETBALL

## "GREEN GAME"

As a part of RecycleMania, SLU hosted its annual "Green Game" during the spring semester. The game featured:

- Pre-game "Green Billiken Party Zone" happy hour, promoting local food and beverages.
- Green Ambassadors in the arena and on the concourse collecting recycling and educating patrons about recycling.
- Vendors providing information about the Chaifetz Arena Green Program.



## SUSTAINABILITY CONFERENCE

---

The Center for Sustainability hosted the one-day conference "Linking Research and Practice: Equitable Economic Growth and Sustainable Water Infrastructure" in January.

The conference featured interactive workshops, panel discussions, and plenary sessions. Bringing together St. Louis region professions, the conference enabled participants to work together on sustainable visions for the St. Louis region. An update on OneSTL (a regional plan for sustainable development) was provided, and it guided discussion and understanding of task prioritization.



## SUSTAINABLE BUSINESS SPEAKER SERIES

---

The John Cook School of Business and Ameren Corporation held the annual Ameren Sustainable Business Speaker Series featuring Tim Gaidis, Sustainable Design Leader at HOK St. Louis (a design, architecture, engineering, and planning firm).

Gaidis presented on "Applying Natural Systems Thinking to Achieve Sustainability in Organizations." He discussed themes of biomimicry, the triple bottom line, and environmental economics, and how they can be integrated into organizations to improve products, workplaces, and business missions.



## ST. LOUIS EARTH DAY SYMPOSIUM

---

The annual St. Louis Earth Day Symposium was held on SLU's campus this year at Il Monastero.

Attendees came from all across the St. Louis region to learn about current and future sustainability practices that are changing the face of our cities and neighborhoods while working to create positive environmental, social, and political impacts in our communities.

Presentation topics focused on transportation, food, biodiversity, and livable communities.



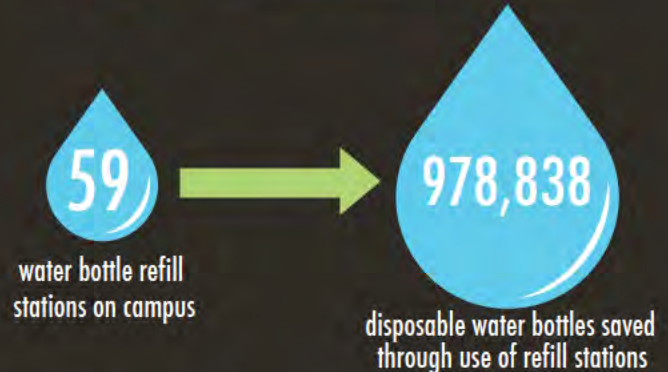
# WATER BOTTLE REFILL STATIONS

Last year, members of the Student Government Association's (SGA) Wellness Committee created the Water Fountain Initiative in an effort to reduce disposable plastic water bottles and create awareness about action for social justice.

Water bottles contribute largely to plastic pollution, which inhibits healthy wildlife, and the privatization of our water system. Through privatization of water, small communities become at risk to water depletion as companies pump available water aquifers without restrictions and little oversight.

Through the Water Fountain Initiative, water bottle filling stations were installed in high-traffic areas across campus. Selected locations include all major academic buildings and a few outside locations.

SGA expanded the effort to reduce disposable plastic water bottles with the Water Bottle Initiative. Nearly 2,200 reusable water bottles were purchased and given out to students at various events so they can rely more on reusable water bottles.



# PLEDGE AGAINST THE USE OF DISPOSABLE WATER BOTTLES



## Plastic water bottles create needless spending.

Drinking tap water every day for a year:



Drinking bottled water every day for a year:



## Instead of disposable water bottles:

1. Obtain a reusable water bottle.
2. On campus, use the water bottle refill stations.
3. Off campus, refill your bottle with tap water.

- Tap water is regulated by the EPA, which makes it safe and healthy to drink.
- Don't like the taste of your tap water?

Squeeze a lemon for added flavor and health benefits!



# GREEN OFFICE GUIDE

As a Jesuit university and a leader in sustainability, a part of SLU's mission is to be financially and environmentally responsible. This responsibility goes beyond just throwing recyclables into a bin, and takes a comprehensive approach to living sustainably everyday through activities that are easy for anyone to adapt to and participate in.

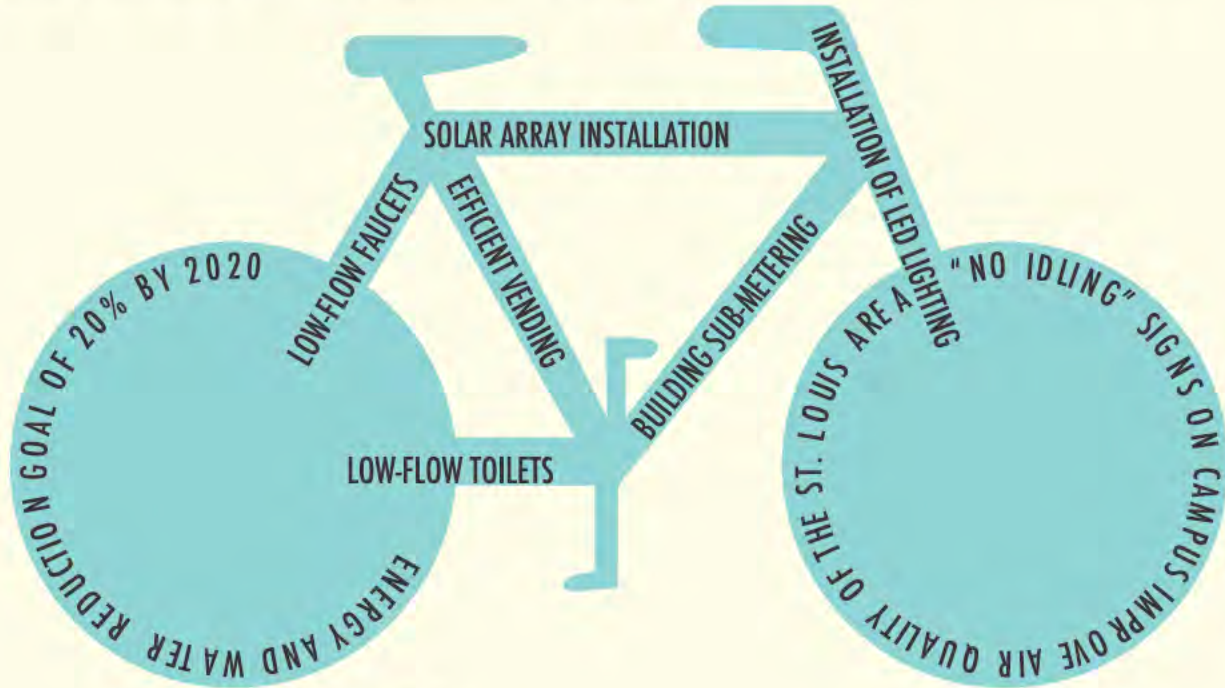
To assist in this endeavor Sustainability & Benchmarking created a guide to assist the busy office employee in living more sustainably. This green guide provides employees with 32 days' worth of tips and ideas. So take the challenge and check out the Green Office Guide to learn how to improve your office space.

Below are a few preview tips from the Green Office Guide:



# ENERGY, EMISSIONS, & TRANSPORTATION

SLU has been working toward reducing the campus' carbon footprint over the past few years. Efforts to decrease energy intensity can be seen through goal setting and project planning efforts that will put the campus on a path to success. The most recent project is the use and support of clean energy through the installation of 9 solar arrays.



FIVE (5) SLU SHUTTLE ROUTES



4% DECREASE IN ENERGY CONSUMPTION SINCE 2013

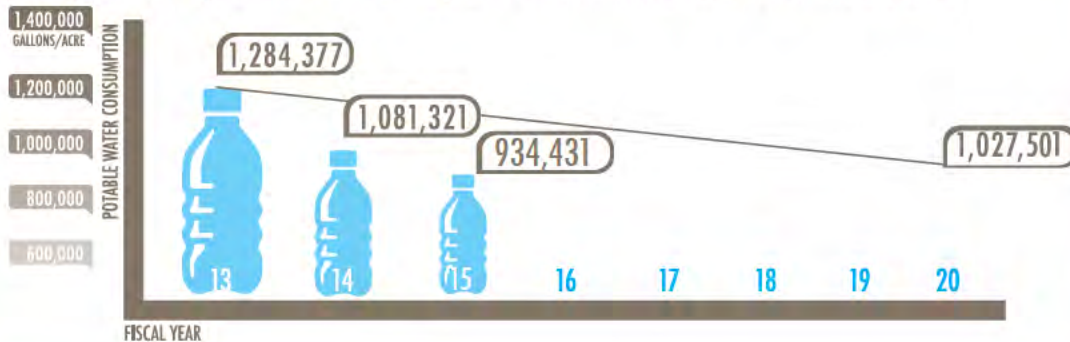


14% DECREASE IN WATER CONSUMPTION SINCE LAST YEAR

# ENERGY AND WATER REDUCTION

SLU's goal is to reduce energy and water usage by 20% in 2020 from a 2013 baseline. As goals are achieved, SLU is committed to pursuing further goals for constant improvement.

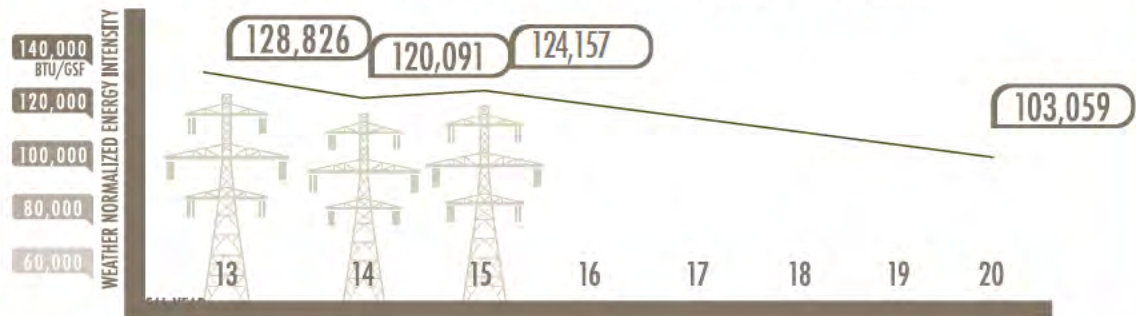
## WATER GOAL: 20% REDUCTION IN POTABLE WATER CONSUMPTION (GALLONS/CAMPUS ACRES) BY 2020 FROM THE 2013 BASELINE



Water consumption is down by 27% since the 2013 baseline.

Energy intensity is down by 4% since the 2013 baseline.

## ENERGY GOAL: 20% REDUCTION IN ENERGY INTENSITY (BTU/GSF) BY 2020 FROM THE 2013 BASELINE



# SOLAR ARRAYS INSTALLED ON CAMPUS

Saint Louis University installed solar arrays consisting of 900 individual panels on 9 campus buildings. The arrays were installed by St. Louis-based Microgrid Solar.

The arrays will generate enough clean energy to power 17 homes a year. This will reduce 191 metric tons of carbon dioxide from the campus' carbon footprint annually.

The project is estimated to save the University over \$960,000 in utility costs over the next 25 years.

The buildings were chosen for the amount of sun exposure they receive, as well as the condition and accessibility of their rooftops, among other factors.

The following SLU buildings are included in the solar project:

## Frost Campus

Adorjan Hall  
Center for Global Citizenship  
Chaifetz Arena's Practice Pavilion  
Everest Education Union  
Littiken Hall  
McGannon Hall

## Medical Center Campus

The Allied Health Building  
Casa de Salud  
Searls Hall



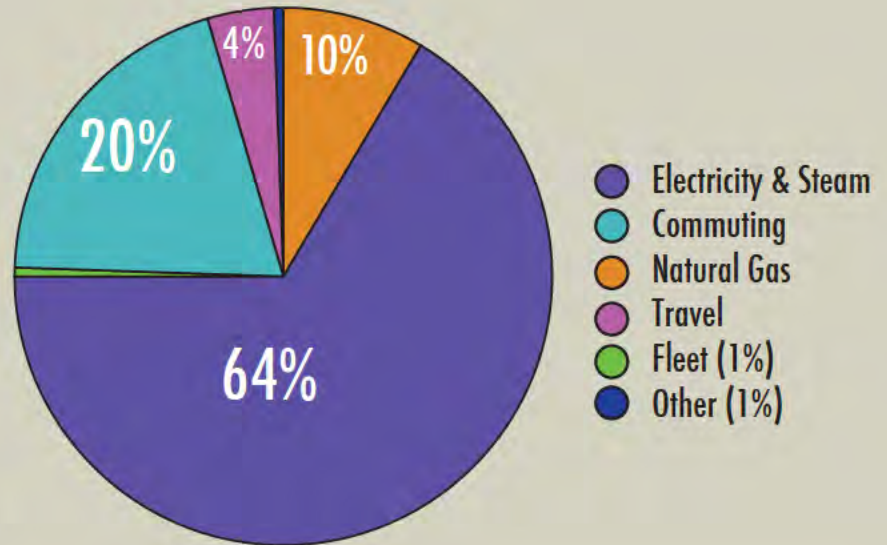


# GREENHOUSE GAS INVENTORY

Saint Louis University completed the first ever greenhouse gas inventory and report for the University. A greenhouse gas (GHG) inventory is a comprehensive analysis of all emissions created from energy used by an institution. The inventory accounts for energy use from fiscal year 2014 (July 1, 2013-June 30, 2014).

As a step toward sustainability at SLU, this greenhouse gas inventory will serve as a baseline for future GHG inventory reviews and provide the University with a tool to track all GHG usage in future years.

The total emissions created by the University totals 153,408 metric tons of carbon dioxide equivalent (mtCO<sub>2</sub>e). This is slightly higher than similar type peer institutions at 142,924 mtCO<sub>2</sub>e. This peer group was selected based on the University's Carnegie classification featuring research doctorate-granting universities who have signed onto the American College & University President's Climate Commitment.



## Three Emissions Scopes

**Scope 1:** Stationary Combustion (refrigerants, fertilizers, natural gas), Mobile Combustion (fleet), and Fugitive Emissions (leaks and escapee gases and vapors from pressurized equipment)

**Scope 2:** Purchased Electricity, Purchased Steam

**Scope 3:** Commuting, Travel, Solid Waste, Office Paper

# SMART TRANSPORTATION OPTIONS

Saint Louis University offers a wide variety of transportation options to serve the needs of our campus community. Our greenhouse gas inventory found that roughly 20% of carbon emissions are a result of commuting to and from campus. Smart commuting options help to reduce SLU's footprint by reducing reliance on personal vehicles, single occupancy trips, and nonrenewable resources. Smart options supported by SLU include:



Shuttle

The Billiken Shuttle Service provides free, safe, and time-efficient transportation around and between campuses. Shuttles are clearly marked with SLU graphics. Check out the mobile shuttle tracker at [m.slu.edu](http://m.slu.edu) to know when you should show.



Metro

Semester passes for full-time students are available through Parking and Cards Services at a discounted student rate. Full-time employees can purchase passes on a pre-tax basis through payroll deduction by signing up at the Parking and Cards Services office.



Carpooling

RideFinders provides a free ride matching service to help commuters carpool to work. Register through their online program to find a match or add members to your already existing carpool. RideFinders also offers a Guaranteed Ride Home Program for emergency ride homes for registered carpool members.



Biking

SLU supports biking as an active transportation method by providing covered and uncovered bike racks throughout campus, shower and changing facilities, and bike registration through the Department of Public Safety & Emergency Preparedness.

# COMMUTER SURVEY

A commuter survey was issued in November to both on-campus residents and campus commuters. The survey studied the transportation patterns, distances, and opinions on alternative transportation options. Information collected in the survey was used in the campus greenhouse gas inventory and the STARS report. It will aid in future decision making regarding alternative transportation.

## COMMUTERS

31% of commuters travel between campuses at least once a week and 29% use the Billiken Shuttle for it.

18% of commuters use a carpool as their primary or secondary daily way to get to campus.

5% of campus commuters bike to campus.

11 miles is the average commute per day.

Free or discounted Metro passes was the most reported way to encourage the use of public transit.

## RESIDENTS

67% of residents travel between campuses 3 or more times per week and 71% use the Billiken Shuttle to do so.

90% do or would be willing to carpool to travel off campus

31% said “not having a bike” was the **top barrier** to biking

**Most** respondents suggested improvements to the biking program

## BY THE NUMBERS

1,429 respondents: 45% students, 44% staff, 11% faculty



# DINING SERVICES

DINE SLU

SLU dining services focus on healthier food options, which includes local and fresh foods.

**Fresh Gatherings Café** hosts the Farm Stand, the Department of Nutrition and Dietetics' farmers market. Open every Thursday 3-6pm.

Fresh and handmade items include:

- produce from SLU's garden and local farmers
- soaps
- vinegars
- peanut butter
- canned pickles
- salsa
- honey
- spice blends
- fresh bread



Highlights of sustainability initiatives in DineSLU's first year include:

- reusable to-go containers and mugs
- recycling all fryer oil
- trayless dining
- local food purchasing



# DINE SLU

## Focus on Fresh Local Foods

DineSLU aims to increase purchasing of locally supplied foods with a commitment of a 5% increase over current 2015 totals of 8.3%. Foods raised, grown, and/or produced locally provide quality, fresh, and pure nourishment to the SLU community. Locally sourced foods also support the local economy.

SLU uses 100% cage-free shell eggs. Cage-free eggs ensure a healthier and happier life for the chickens who produce our food.

## Focus on a Balanced Menu

Menu options are planned to include nutritionally valuable, calorie conscious, freshly prepared food choices. Special dietary needs and preferences are accommodated with vegetarian and vegan options, sensitivity to food allergies, and inclusion of international dishes.



## Focus on Reusables

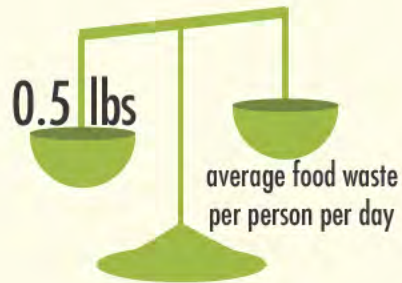
In an effort to reduce disposable packaging at its source, DineSLU has a reusable container program. Reusable to-go containers, cups, water bottles, and mugs offer customers a hands-on opportunity to lighten their carbon footprint.

Aramark offers reusable ecoClamshell containers to encourage patrons to forgo disposable containers. For a one-time fee of \$5 paid at Griesedieck or Reinert Dining Hall, program participants can use the ecoClamshell at all DineSLU locations on campus.



# WEIGH THE WASTE

A November waste audit of University dining halls showed how much SLU consumers waste.



This adds up to 15 pounds of food waste  
per person per month.



Analyzing food waste allows easy communication with the campus community about awareness of waste streams.

"Calling attention to consumer level food waste is an important step in reducing the more than 70 billion pounds of food discarded annually", said Amelia Fisher, DineSLU sustainability coordinator. "Weigh the Waste is a way for the Saint Louis University community to visualize the issue and make a conscious effort to reverse it."

# CELEBRATING FOOD SUSTAINABILITY

**FARM TO FORK** was an event held in March featuring meals with locally-farmed food and a speaker from Rusty Lee, farmer of Lee Farms. Lee discussed sustainable growing practices and sustainable irrigation techniques. The meals were designed to incorporate local foods in a variety of ways to show the versatility of local crops.

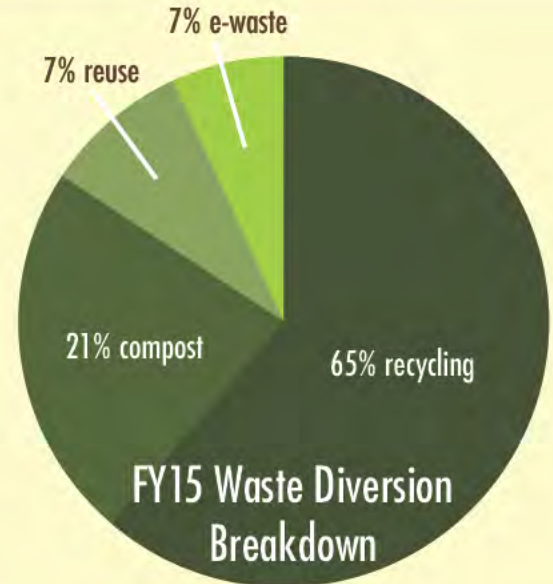
**DAIRY DECEMBER** showcased local dairy suppliers and promoted the importance of eating and buying locally. Products from Fox River Dairy, Windcrest Dairy, and Prairie Farms were served so the SLU community could try dairy products made locally in the Missouri and Illinois region.

In February, DineSLU celebrated Social Justice Day by serving samples of Rainforest Alliance and Fair Trade Certified beverages. Featured beverages included:

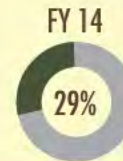
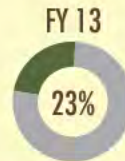
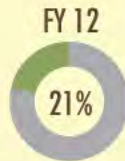
- Kaldi's Coffee (Fair Trade Certified)
- Ronnoco Coffee (Rainforest Alliance Certified)
- Naked Juice (Rainforest Alliance Certified)



# WASTE



Annual Percent Recycled



Efforts to raise the campus' waste diversion encourages everyone to get involved in the 3 "R's": reduce, reuse, recycle

- Reduction efforts focus on awareness programs with training sessions and learning guides.
- Reuse efforts include donation drives such as Trash to Treasure, which diverts clothing and furniture during move-out; Battle for the Boot, a shoe donation drive; re-usable water bottle initiative; and a furniture reuse program.
- Recycling efforts include a comprehensive single-stream recycling program, recycling competitions, an e-waste program, and a plan for the introduction of a composting program.



# CHANGES IN WASTE

## INTERIOR RECYCLING BIN LABELING PROJECT

Throughout the spring and summer, Facilities Services labeled approximately 6,000 interior recycling bins in an effort to increase uniformity and create consistent messaging about SLU's single-stream recycling program. The new labels replaced the outdated information with clear and consistent messaging.

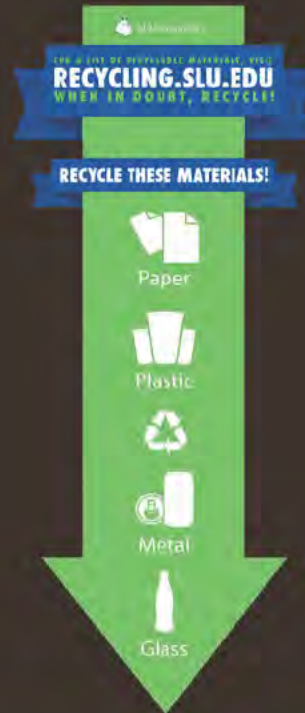
This initiative creates consistent, updated signage of SLU's single-stream recycling program in hopes of increasing the understanding and awareness of what is recyclable throughout all of campus. This collaborative project was led by the departments of Sustainability and Benchmarking and Custodial Services.

If we missed you or you see a bin missing the new signage, e-mail [greenbilliken@slu.edu](mailto:greenbilliken@slu.edu).

## NEW WASTE HAULER

SLU has a new waste hauler, Progressive Waste Solutions. As SLU transitions over to its new vendor, the campus community will notice new dumpsters are color-coded to match SLU's recycling program. Blue dumpsters are for single-stream recycling and green are for landfill waste.

Remember to use the right dumpster! This will help SLU reach its goal of a 30% recycling rate.



## Waste Diversion Content Breakdown



- 39% Single-Stream Recycling
- 23% Shredded Paper
- 21% Compost (yard and food waste)
- 7% Reused items (Trash to Treasure, warehouse items, shoes, toner, books)
- 7% E-Waste
- 2% Scrap Metal
- 1% Fryer Oil

# COMPOST

On-campus composting is used to generate necessary nutrients for plant life in flower beds around campus and helps keep waste out of the landfill.



SLU composts yard waste from campus grounds which includes tree branches, bushes, flowers, and other natural plants. The compost is later returned to SLU's flower beds providing needed nutrients and completing a continuous cycle.

Fresh Gatherings Café composts both food waste and serving ware, including plates, bowls, and cups that were designed to be composted. The pre- and post-consumer waste is broken down in compost tumblers, an Earth Tub, and a vermiculture system. The compost is later returned to SLU's on campus garden to supply needed nutrients to the plants and vegetables.



# GROUNDS

## Respect Trees

A volunteer tree planting session was held in November last year on the Medical Center campus as part of the recertification process for Tree Campus USA. Representatives of the Campus Tree Advisory Team gave a brief talk about the campus tree population and proper planting techniques. Volunteers were then paired with Grounds personnel and planted 30 trees in various locations around the Medical Center campus.

The planted trees were donated by Forest ReLeaf, a local nonprofit community-assisted tree nursery, as part of the Priority ReLeaf program. The program provides trees for planting and project planning assistance on public or nonprofit property to groups and communities in St. Louis City and St. Louis County.

## Why Trees?

Why not trees? They contribute to our health, clean our air, provide us with oxygen, filter our drinking water, cool surface temperatures, reduce climate change, save energy, reduce crime, and increase local economy.

### FUN FACTS:

- Trees properly placed around buildings can reduce A/C need by 30%
- Missouri's forests store more than 5 million tons of carbon
- Trees along streets in Missouri's communities provide \$148 million in financial benefits, including energy savings, increase in property value, and stormwater retention.



## Milkweeds for Monarchs

In 2014, a new initiative was announced by Mayor Slay. Milkweeds for Monarchs is designed to foster the connection between people and urban nature, with a goal of creating 250 monarch butterfly gardens throughout St. Louis city neighborhoods and community spaces.

In support of this cause, Grounds Services planted a Milkweeds for Monarchs butterfly garden in the Koenig Plaza in front of Shannon and Monsanto Halls. The plants included were carefully selected to provide habitat and nourishment for the butterflies while being aesthetically pleasing.

## Why Milkweeds?

The monarch butterfly population has declined more than 90 percent over the last two decades due to habitat loss and chemical use. Female monarchs depend on milkweeds to lay their eggs and feed their caterpillar larvae. While other plant species can serve as nectar sources for the butterflies, the monarch caterpillars feed solely on milkweeds.

# RECOGNITION

## STARS Silver Rated

Saint Louis University is a member of the nation's leading organization promoting sustainability on college campuses, The Association for the Advancement of Sustainability in Higher Education (AASHE). One of the tools provided by AASHE is the Sustainability Tracking, Assessment and Rating System, better known as STARS.

STARS is the most widely recognized framework in the world for publicly reporting information regarding a college or university's sustainability performance.

SLU has participated in the STARS program since 2011 as a charter participant and has since completed two full assessments to measure sustainability components on campus. The University's first complete STARS assessment in 2011 received a Bronze rating.

The most recent STARS assessment in 2015 increased the University's level to a Silver rating. This was no small accomplishment, as a detailed plan was put together to achieve and increase points in several categories. Major achievements in the last assessment include enhanced energy and water goals, creation of a baseline for the University's greenhouse gas inventory, and training integration in new employee and student orientation sessions.

Assessment through STARS is reported in four main areas: operations, academics, engagement, and planning and administration. These categories are used to provide direction at SLU toward campus sustainability initiatives.

The STARS program is open to all institutions of higher education. Criteria that determine a STARS rating are transparent and accessible to anyone. Because STARS is a program based on credits earned, it allows for both internal and external comparisons.



## St. Louis Green Business Challenge Star Circle of Excellence Recipient:

As a voluntary participant in the St. Louis Green Business Challenge, SLU's sustainability efforts are evaluated via detailed checklists in various categories. Main categories in the challenge include; energy use reduction, water use reduction and management, waste reduction and management, employee engagement and outreach, indoor environmental quality, and alternative transportation promotions.



## Sierra Club "Cool School":

Saint Louis University was named one of Sierra Club's top 100 "Cool Schools" for its commitment to sustainability. Open to all four-year, degree-granting undergraduate colleges and universities in the United States, SLU earned a ranking of 100 out of 153 by completing an extensive questionnaire regarding sustainability efforts on campus.



## One of the Top Green Schools by the Princeton Review:

Top Green Schools are colleges with the most exceptional commitments to sustainability based on their academic offerings and career preparation for students, campus policies, initiatives and activities. SLU was also included on Princeton Review's "379 Best Colleges List" for 2015.



## 2014 Tree Campus by National Arbor Day Foundation:

Tree Campuses are identified based on colleges and universities who show leadership in promoting healthy trees and engaging the campus community in the spirit of conservation. SLU is one of eight institutions in Missouri, and only one of two Jesuit institutions to earn this distinction.



# FROST CAMPUS



Single stream recycling is offered next to every landfill bin on campus. Indoor recycling receptacles are stationed in every building including every residence hall floor.

To find out more information and get involved, visit [greenbilliken.slu.edu](http://greenbilliken.slu.edu) or email [greenbilliken@slu.edu](mailto:greenbilliken@slu.edu). You can also find us on social media!

## SAINT LOUIS UNIVERSITY

# SUSTAINABILITY MAP

Like Us [GREENBILLIKEN](#) Tweet Us [@GREENBILLIKEN](#) Follow Us [@GREENBILLIKEN](#)

## KEY



Campus proximity to MetroLink and MetroBus stations allows utilization of public transportation, which reduces the community's carbon footprint.

Yellow lines on the road represent dedicated bike lanes offered around campus for those who bike to campus.

Campus grounds and greenery are fertilized with natural composted fertilizer.



Solar arrays save energy and reduce CO<sub>2</sub> emissions



The shuttle service connects the campuses and provides alternative transportation



Bike racks on campus reduce carbon footprints and car usage on campus



Free shower stations for those who bike to campus



Water bottle refilling stations reduce the amount of plastic water bottles used



Outdoor recycling bins reduce the amount of materials sent to landfills



BigBelly Solar recycling and landfill compactors save time, fuel & money and reduce carbon footprint



The Water Retention Area sponsors a variety of plants native to the St Louis area and absorb storm water that would normally be relocated to drainage



Food service location certified by the Green Dining Alliance for environmental responsibility. Located in the CGC



Milkweeds for Monarchs, a citywide butterfly garden initiative, expands habitats for Monarchs. Planted in Koenig Plaza



Center for Sustainability & Facilities Services Offices



Just Earth is a student organization focused on environmental concerns. Their meetings are located in Ritter Hall

Updated August 2015

# MEDICAL CENTER CAMPUS

The Doisy Research Center is awarded with LEED Certification. The state-of-the-art research facility was built with recycled steel, concrete, and carpeting, as well as materials from rapidly renewable sources. The facility also features a green roof.



## SUSTAINABILITY MAP

### STARS SILVER RATED

SLU received a silver rating from STARS (the Sustainability Tracking, Assessment and Rating System), sponsored by AASHE (Association for the Advancement of Sustainability in Higher Education). STARS is a comprehensive self-assessment tool used by institutions of higher education to measure sustainability progress across four main categories: academics, engagement, operations, and planning & administration.



### AWARDS & ACHIEVEMENTS

- FEATURED IN PRINCETON REVIEW'S GREEN GUIDE •
- NAMED SIERRA CLUB 'COOL SCHOOL' • TREE CAMPUS CERTIFIED •
- GREEN BUSINESS CHALLENGE CIRCLE OF EXCELLENCE RECIPIENT •



## KEY

THE FOLLOWING COLORED MARKERS REPRESENT SOME OF THE MANY SUSTAINABLE INITIATIVES THAT TAKE PLACE ON SLU'S CAMPUS

Campus proximity to MetroLink and Metro Bus allows utilization of public transportation, which reduces the community's carbon footprint.



Solar arrays save energy and reduce CO<sub>2</sub> emissions



The shuttle service connects the campuses and provides alternative transportation



Bike racks on campus reduce the carbon footprint and car usage on campus



Shower stations are conveniently located for those who bikes to campus



Water bottle refilling stations reduce the amount of plastic water bottles used



Outdoor recycling bins reduce the amount of materials sent to landfills



BigBelly Solar compactors save time, fuel, and money & reduces carbon footprint



Campus compost containers collect biodegradable waste to later be used as fertilizer



Led by Nutrition and Diabetics, Fresh Gatherings Cafe is a student-supported cafeteria that utilizes local farmers, manages an on-campus organic food garden and orchard, and raises cage-free hens that lay organic eggs



Campus grounds and greenery are fertilized with natural composted fertilizer.

Yellow lines on Grand represent bike lanes offered around campus for students and employees who bike to campus.





SLUustainability

For further information, contact:

**OPERATIONS**

Facilities Services  
greenbilliken@slu.edu  
greenbilliken.slu.edu

**ACADEMICS & RESEARCH**

Center for Sustainability  
sustainability@slu.edu  
sustainability.slu.edu

To stay connected:

**FOLLOW US ON FACEBOOK,  
TWITTER, AND INSTAGRAM**  
@GREENBILLIKEN



SAINT LOUIS  
UNIVERSITY

Higher purpose.  
Greater good.™