

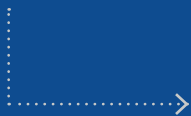


BE A BILLIKEN.

The
**LEARNING
COMMUNITY
EXPERIENCE**

SAINT LOUIS UNIVERSITY™

LIVE. LEARN. CONNECT.



Over
HALF OF SLU FRESHMEN
PARTICIPATE

94% OF LEARNING COMMUNITY
STUDENTS RETURN TO SLU
THE FOLLOWING YEAR





Learning Communities (LC) are inclusive communities formed around academic interests where students learn together and live on the same floor of a residence hall. Students in Learning Communities take classes together, which can greatly enhance their ability to grow and learn their first year at SLU.



9:1

STUDENT-FACULTY
RATIO AT SLU

LEARNING COMMUNITIES provide a great way for you to meet new people and make friends with those who have similar interests. Plus, research shows that students are more successful when their academic experiences are integrated with other aspects of their life. You will have the opportunity to get involved on campus and within the larger Saint Louis University community.

BE Learn more about each Learning Community at slu.edu/lc.

WHAT WILL I DO IN A LEARNING COMMUNITY?

- + Connect with students with similar academic and personal goals — **register for courses together.**
- + Connect with faculty outside the classroom.
- + Get connected to campus life and University resources.
- + Explore St. Louis through exciting field trips.
- + Volunteer through community service projects.
- + Access academic peer mentoring and tutoring.
- + Discover leadership development opportunities.
- + Explore career options.





LEARNING COMMUNITY REQUIREMENTS:

- + Must live in the Learning Community assigned residence hall
- + Enroll in Learning Community associated courses

HOW TO JOIN A LEARNING COMMUNITY

1 SELECT YOUR LEARNING COMMUNITY.

Review the list of Learning Communities, and select the community or communities for which you want to apply. Don't forget to look at the requirements for each Learning Community since some require a specific major.

2 SUBMIT BOTH YOUR HOUSING AND LEARNING COMMUNITY CONTRACT.

Apply for your Learning Community by submitting the Learning Community contract in addition to the Housing contract which is available through myslu.slu.edu. You must submit your enrollment deposit before you can access your contracts. In order to be included in the first round of housing assignments, you must complete the housing contract by **June 30**. Acceptance to Learning Communities is on a rolling basis until filled.

3 CONFIRM YOUR LEARNING COMMUNITY COURSES.

You will be **registered for the Learning Community associated courses** prior to SLU 101 orientation. During SLU 101, you will meet with an advisor to make sure the courses fit your major and schedule.



DIVERSITY AND GLOBAL CITIZENSHIP LEARNING COMMUNITY

This Learning Community helps students to answer what it means to live in a global society by exploring the human experience. The students and faculty in this community are passionate about social justice and inclusion on a local and global scale. The community participates in dialogues about identity, dinners with faculty, workshops to further their understanding of diversity and an international immersion trip to Ecuador. This community is open to all students.

Students will be enrolled in American studies, anthropology, political science and sociology courses. Open to all majors and recommended for students majoring in women's and gender studies, African American studies, American studies, sociology, anthropology, communication, economics, environmental studies, international studies, political science and other arts and sciences majors.



BEATRICE BEIRNE

Major:
Political Science/
American Studies
Hometown:
Chicago, Illinois

“Being a part of this LC means more than taking classes to me — we teach each other, begin to understand, and learn when to listen through our programs and events.”

80
STUDENTS



**GRAND
HALL**



80

STUDENTS



GRAND
HALL



ENGINEERING AND INNOVATION LEARNING COMMUNITY

The Engineering and Innovation Learning Community is an excellent opportunity for you to live in a community of scholars that share a commitment to the fields of engineering, physics and flight science. This community is extremely popular with first-year Parks College students — there is a Maker Space on the residence hall floor, located in Grand Hall, which includes tools such as a 3D printer, laser engraver and robotics kits.

Depending on a student's major, students will be enrolled in aviation science, chemistry, engineering, math and physics courses. This community is open to all students in Parks College of Engineering, Aviation and Technology.

SARAH GOULD

Major: Biomedical Engineering

Hometown: Nashville, Tennessee

“Living in the LC has helped me gain a strong sense of confidence in pursuing engineering. I have also been able to improve on my collaborative skills through community and faculty events.”

ALYSSA BONING

Major: IT Management / Hometown: St. Louis, Missouri

“Throughout the year, I have really enjoyed listening to the special guests my resident advisors have invited to our floor and the various business fields they discussed.”



ETHICAL LEADERS IN BUSINESS LEARNING COMMUNITY

The Ethical Leaders in Business Learning Community focuses on the relationship between business and leadership characteristics. You will have opportunities to learn from guest speakers, get hands-on experience through field trips, and take courses that connect personal interests and strengths with career goals. This community has a business incubator located on the residence hall floor, located in Grand Hall, to assist students with entrepreneurial networking and mentoring.

Students will be enrolled in business, economics and theology courses. This community is open to students in Richard A. Chaifetz School of Business.

80
STUDENTS



GRAND
HALL

ETHICAL LEADERS IN BUSINESS





150

STUDENTS



REINERT
HALL



SAWYER LATOUR

Major: Nutrition and Dietetics / **Hometown:** Carbondale, Illinois

“The Health Sciences LC has given me the opportunity to form a steady, helpful study group of like-minded, driven individuals. I feel a stronger commitment to the health field and my peers.”

HEALTH SCIENCES LEARNING COMMUNITY

The Health Sciences Learning Community provides the opportunity for you to further your understanding of and connection to the interdisciplinary world of health sciences. Students in the Doisy College of Health Sciences and Trudy Busch Valentine School of Nursing can join the Health Sciences Learning Community to live and learn with future colleagues in health care.

Depending on a student's major, students will be enrolled in anatomy, biology, chemistry, health sciences, health care ethics, interprofessional education, nursing, occupational sciences, physical therapy, psychology and theology courses. This community is open to students in the Doisy College of Health Sciences and the Trudy Busch Valentine School of Nursing.

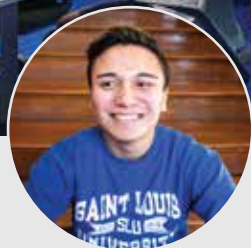


HONORS LEARNING COMMUNITY

The University Honors Program is known for its commitment to integrative and interdisciplinary learning. The Honors Learning Community, located in Spring Hall, provides additional opportunities for faculty engagement and student collaboration. Students form rich relationships in the Honors LC that persist throughout their studies at SLU.

Honors faculty will often spend time in the residence halls, facilitating discussions about self, SLU and the St. Louis community. This community also has a sophomore component for active participants who wish to continue in the community for a second year.

Students will be enrolled in honors, philosophy and theology courses.
You must be accepted into the Honors Program and remain in good standing in order to live in the Honors Learning Community.



JOE REYES

Major:
English/Political Science
Hometown:
Omaha, Nebraska

“The Honors LC has empowered me to do more for the SLU community in both my academics and extracurriculars because I was surrounded by other driven, first-year students who have a passion not only for the community but higher truth.”

110
STUDENTS



SPRING
HALL



60
STUDENTS



SPRING
HALL



HOPE STRATMAN

Major: Health Sciences / Hometown: Omaha, Nebraska

“My LC has helped me grow in awareness and understanding of social issues, and it has given me opportunities to stand up for the things I believe in.”

LEADERSHIP FOR SOCIAL CHANGE LEARNING COMMUNITY

If you are interested in becoming a leader and making a difference in the world, the Leadership for Social Change Learning Community is the perfect way to start off your SLU experience. Located in Spring Hall, this community will challenge you to learn about social advocacy through relationship building, creative action and the social sciences.

You will learn to identify, critique and innovatively address underlying issues within community structures as a result of this Learning Community experience. This community is a great way to build significant connections, meet passionate faculty and become active in the city of St. Louis. This community is open to all students. A supplemental essay prompt will be sent via email upon completion of the housing contract.

Students will be enrolled in American studies, fine and performing arts, psychology, sociology and theology courses. Open to aspiring student leaders of all majors and specifically geared toward students majoring in English, philosophy, theology, theatre, music, art history, studio art, foreign language, education, psychology, sociology, anthropology, and other programs in the College of Arts and Sciences.

**MOHIT SIROLE****Major:****Biology****Hometown:****Chicago, Illinois****LIFE SCIENCES LEARNING COMMUNITY**

The Life Sciences Learning Community gives you the opportunity to live and study with others who share your major. The community will help you to develop and explore interests within the medical sciences, public health, sustainability and technology in science. One of the main goals of this community is to provide the optimal environment for studying, learning and building community with other science and pre-medical students.

***Depending on a student's major, students will be enrolled in biology, chemistry and public health courses.** This community is open to all students but is especially recommended for those majoring in biology, chemistry, environmental science or pursuing a pre-professional health track (pre-medicine, pre-dentistry, pre-physician assistant, etc.).*

150
STUDENTS



**REINERT
HALL**

“This LC has linked courses related to the natural sciences so that students can find greater coherence in what they are learning. It provides additional intellectual interaction with faculty, students, doctors and professionals with similar interests.”



80
STUDENTS



MARGUERITE
HALL



MICAH: LIVING THE MISSION

The Micah Program brings together faith, service, community and academics. Working among people from many racial and ethnic backgrounds who live in neighborhoods near the University, Micah community members will perform three hours of service a week together at one of 13 sites. The program offers an optional minor in urban poverty studies. Interested students can apply to the Micah Program through their applicant portal at slu.edu/apply.

During a weekly community hour, Micah students gather in small groups to support one another, reflect on experiences in class and at service sites and share their faith. Many older students stay involved throughout their college careers, continuing their service, serving as mentors, leading retreats and small-group gatherings and organizing Micah large-group service days and social events.

Students will be enrolled in American studies, African American studies, Latin-American studies, communication, philosophy and theology courses. The program is open to students of all faiths and majors.

AMANDA SILVA

Major: Nursing / Hometown: Dumont, New Jersey

“Micah is home. Home that empowers me to speak out, to express myself, and to act with compassion in the things that I do.”



20
STUDENTS



MARGUERITE
HALL



THRIVE: BLACK AND TALENTED LEARNING COMMUNITY

The THRIVE: Black and Talented Learning Community is designed to support the successful transition of first-year participants to Saint Louis University. Students will deepen their cultural understanding and awareness of the black diasporic experience and develop the skills and tools to address institutional and societal change. The community engages in common courses; activities, including optional spring break excursions; and dialogue with faculty, staff and alumni that foster their learning and development. As part of the experience participants will also take part in a mentoring program dedicated to personal and academic excellence during the undergraduate experience and beyond.

As part of the curricular component of this LC, students will be enrolled in courses within African American studies, American studies, communications, theology, women and gender studies, psychology, sociology and others from the College of Arts and Sciences. This LC is open to students of all majors.



THRIVE: BLACK + TALENTED



MEDALLION PROGRAM

Students who complete Saint Louis University Learning Community and Medallion Program requirements receive an academic certificate of completion and graduation medallion to be worn at commencement. An award ceremony is held each spring for all Learning Community scholars.

MEDALLION PROGRAM REQUIREMENTS

FALL AND SPRING SEMESTER

- + Three faculty-led community experiences
- + Four general community experiences
- + Attendance at monthly floor/Learning Community meetings
- + 10 service hours
- + Written reflection
- + Enrollment and participation in Learning Community associated courses



The medallion features a fleur-di-lis and a laurel, which symbolizes accomplishment, achievement and honor.



WE HAVE FUN TOGETHER.

ANNUAL EVENTS

ICE CREAM SOCIAL

Enjoy ice cream and interact with faculty, staff and alumni of the Learning Community program.

LEARNING COMMUNITY ACTIVITIES BOARD

Each Learning Community has one or two representatives who act as their liaison to plan fun and exciting events for the program.

ED TALKS

Engage with faculty as they present their research and areas of academic interest.

NIGHT AT THE CITY MUSEUM

Explore the City Museum and get to know students from different Learning Communities.

BIG PINK VOLLEYBALL

Form a team and compete in an oversized pink volleyball tournament to raise money for breast cancer awareness.

SYMPOSIUM

Exhibit and share examples of Learning Community research and creative work within the University community.



WE GO TO CLASS TOGETHER.

Learning Communities offer a chance to **TAKE CLASSES WITH YOUR ROOMMATE AND FLOORMATES** and to go on off-campus excursions, attend special lectures and get involved in community service together.

BE To view the fall and spring semester courses affiliated with each Learning Community, visit slu.edu/lc.



SAINT LOUIS
UNIVERSITY™

— EST. 1818 —

HOUSING AND RESIDENCE LIFE

1 N. Grand Blvd. + DuBourg Hall, Room 157 + St. Louis, MO 63103

lc@slu.edu + 314-977-2811 + slu.edu/lc

PRINTED 3/2020