

Connecting to Billiken Wired

Registering your device to the Residential Network at SLU

Step by Step

NOTE: Before registering, please be logged in with admin rights and plugged into a wired network.

1. Open a web browser, go to Resnetreg.slu.edu
2. Check the SLU acceptable Use Policy box and Click Next, F1
3. Log-in with SLU Net ID and SLU Net Password, Click Continue, F2
4. Click Register This Device
5. Click Download
6. Once downloaded, double-click the downloaded application
 - a. The application can be found on the bottom right of your web browser or in your downloads folder.
 - b. For Macs, the application is called XpressConnect located in the downloaded zip folder
 - c. For PCs the application is called NetworkWizard
7. The program should start running automatically, at the end of the scan, a pop-up will say either passed or failed, F4
8. If the computer passed, the user can access the internet now.
 - a. If the computer fails, you will need to follow steps 1 – 7 after resolving the errors
 - b. Please reference the Troubleshooting Guide for detailed instructions on resolving errors

Supported Operating Systems:

Windows 7 or higher

Mac 10.8 or higher

Supported Web Browsers:

Firefox or Chrome, only

Frequently asked questions:

Getting a time out error?

- Make sure to use Chrome or Firefox, clear your cookies and cache, restart your browser and try registering again.

Trying to register a gaming console?

- Please choose Register a Different device, and enter the MAC address of your gaming device.
- Please keep gaming to the wired network only and hosting games over the network is not permitted.

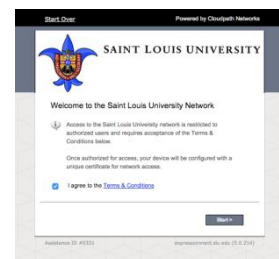
Have a device that does not have a web browser?

- Find the MAC (or physical) address of your device, and use the Register a different device option on F3.

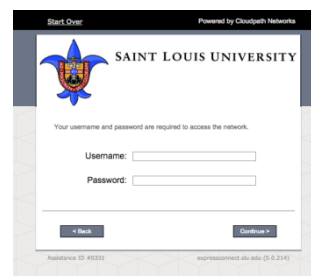
Having Problems registering?

- Call the ITS Help Desk at 977-4000 or see the Student Service Desk located in BSC 137.

Screens



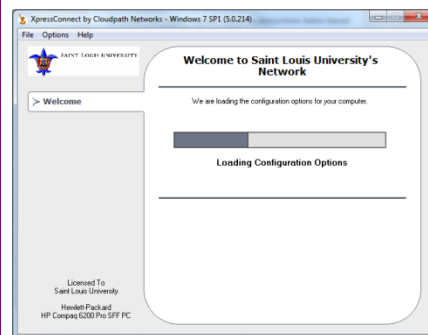
F1: SLU Acceptable Use Policy



F2: Login with your SLU Net ID and Password



F3: Registering Options



F4: XpressConnect Application Window