



SAINT LOUIS UNIVERSITY
—
SCHOOL OF MEDICINE
—
OFFICE OF DIVERSITY, EQUITY
AND INCLUSION

COVID-19 Vaccine: Facts for the Community and Faith-Based Organizations

- **Daniel Blash, Ph.D.**, Vice Dean of Diversity, Equity and Inclusion and Chief Diversity Officer, School of Medicine
- **Sharon Frey, M.D.**, Clinical Director, Center for Vaccine Development Saint Louis University
- **Reverend Charles Norris**, St. James African Methodist Episcopal Church, St. Louis, MO
- **Pastor C. Myles Young**, The Rock Church, Elk Grove, CA



COVID-19 Vaccine: Facts for the Community and Faith-Based Organizations

- Introduction and Comments
- Myths about COVID-19 Vaccine
- Q&A
- Closing Remarks



SAINT LOUIS UNIVERSITY

—
SCHOOL OF MEDICINE

—
OFFICE OF DIVERSITY, EQUITY
AND INCLUSION



SAINT LOUIS UNIVERSITY
—
SCHOOL OF MEDICINE
—
OFFICE OF DIVERSITY, EQUITY
AND INCLUSION

MYTH 1: You can delay routine vaccinations until the pandemic is over.

You shouldn't postpone your vaccinations.

Submit question in the Q & A feature



SAINT LOUIS UNIVERSITY
—
SCHOOL OF MEDICINE
—
OFFICE OF DIVERSITY, EQUITY
AND INCLUSION

MYTH 2: The COVID-19 vaccines were developed too fast to be safe.

The technology used to develop the new COVID-19 vaccines is not new.

Submit question in the Q & A feature



SAINT LOUIS UNIVERSITY
—
SCHOOL OF MEDICINE
—
OFFICE OF DIVERSITY, EQUITY
AND INCLUSION

MYTH 3: There were not enough participants in the clinical trials to declare the vaccines safe.

Both COVID-19 vaccines enrolled tens of thousands of participants, many of whom were followed for two months after receiving the second dose, as is common with other vaccine trials.

Submit question in the Q & A feature



SAINT LOUIS UNIVERSITY
—
SCHOOL OF MEDICINE
—
OFFICE OF DIVERSITY, EQUITY
AND INCLUSION

MYTH 4: I already had COVID-19,
so I do not need the vaccine.

It's not clear how long a natural infection with COVID-19 provides immunity from the disease. There are reports of individuals becoming reinfected with the virus.

Submit question in the Q & A feature



SAINT LOUIS UNIVERSITY
—
SCHOOL OF MEDICINE
—
OFFICE OF DIVERSITY, EQUITY
AND INCLUSION

MYTH 5: COVID-19 vaccines were developed to deliver a microchip into my body.

There is not a microchip in the vaccine. This false rumor started after comments were made about digital vaccine records.

Submit question in the Q & A feature



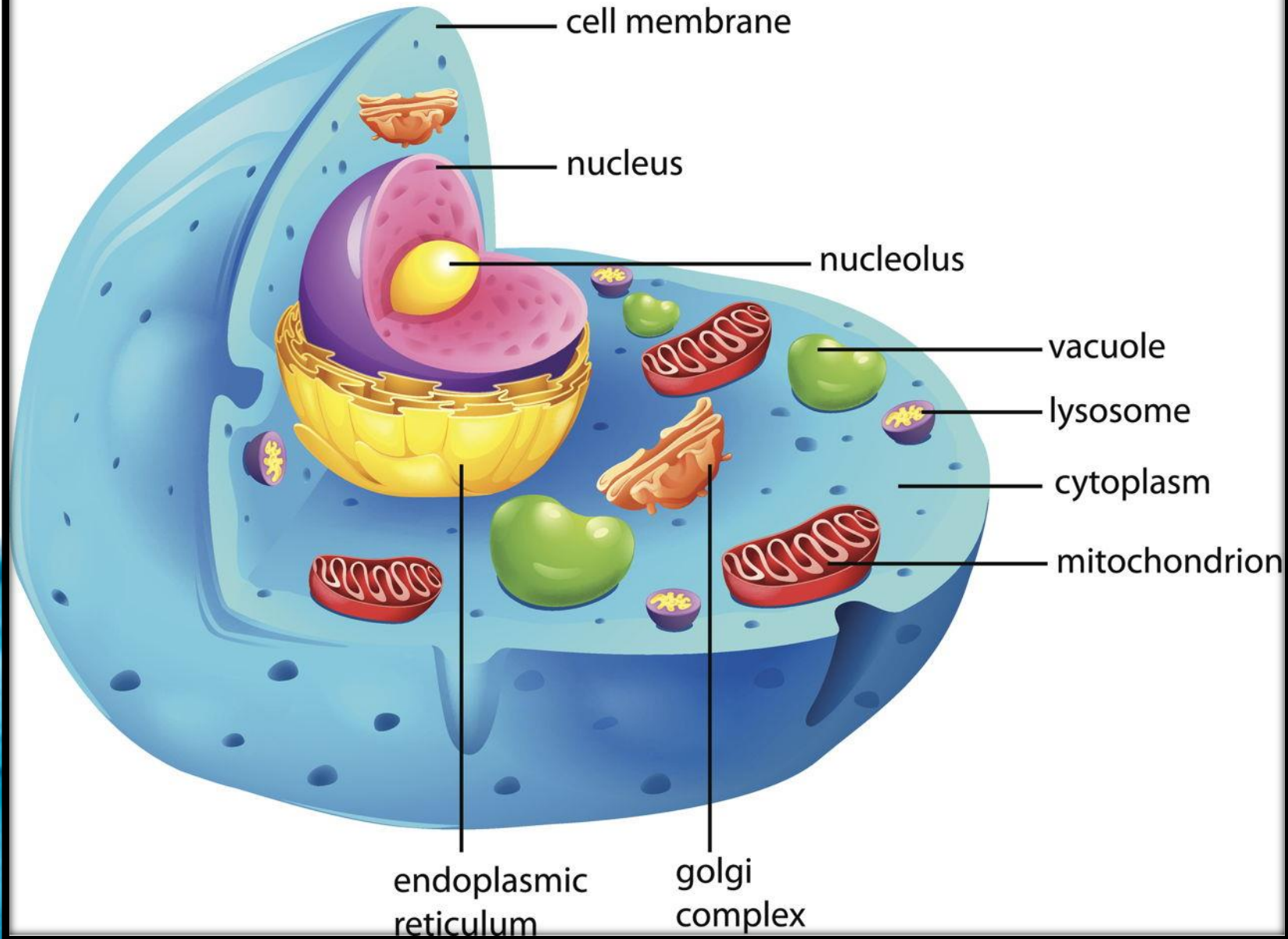
SAINT LOUIS UNIVERSITY
—
SCHOOL OF MEDICINE
—
OFFICE OF DIVERSITY, EQUITY
AND INCLUSION

MYTH 6: The vaccine will alter my DNA.

This is not possible. Messenger RNA (mRNA) vaccines work in the cell's cytoplasm and never enter the cell nucleus, where the DNA, your genetic material, lives.

Submit question in the Q & A feature

Anatomy of an Animal Cell





SAINT LOUIS UNIVERSITY
—
SCHOOL OF MEDICINE
—
OFFICE OF DIVERSITY, EQUITY
AND INCLUSION

Is the COVID-19 vaccine safe?

All the COVID-19 vaccines being used have gone through rigorous studies to ensure they are as safe as possible. Systems that allow CDC to watch for safety issues are in place across the entire country.

Submit question in the Q & A feature



SAINT LOUIS UNIVERSITY
—
SCHOOL OF MEDICINE
—
OFFICE OF DIVERSITY, EQUITY
AND INCLUSION

What are the side effects of the COVID-19 vaccine?

You may have pain and swelling at the injection site and experience fever, chills, tiredness, and headache. Side effects may feel like flu and even affect your ability to do daily activities, but they should go away in a few days.

Submit question in the Q & A feature



SAINT LOUIS UNIVERSITY
—
SCHOOL OF MEDICINE
—
OFFICE OF DIVERSITY, EQUITY
AND INCLUSION

Is there a risk of severe allergic reaction if I receive the vaccine?

Serious problems from vaccination can happen, but they are rare.

Submit question in the Q & A feature



SAINT LOUIS UNIVERSITY
—
SCHOOL OF MEDICINE
—
OFFICE OF DIVERSITY, EQUITY
AND INCLUSION

Do the COVID-19 vaccines contain aborted fetal tissue?

No, the COVID-19 vaccines do not contain any aborted fetal cells. However, Pfizer and Moderna did perform confirmation tests (to ensure the vaccines work) using fetal cell lines. Fetal cell lines are not the same as fetal tissue. Fetal cell lines are cells that grow in a laboratory. They descend from cells taken from elective abortions in the 1970s and 1980s. No fetal cell lines were used to manufacture the vaccine, and they are not inside the injection you receive.

[Submit question in the Q & A feature](#)



SAINT LOUIS UNIVERSITY
—
SCHOOL OF MEDICINE
—
OFFICE OF DIVERSITY, EQUITY
AND INCLUSION

Which lasts longer, immunity after getting COVID-19 or protection from COVID-19 vaccines?

We don't know how long natural immunity might last. Current evidence suggests that getting the virus again (reinfection) is uncommon in the 90 days after the first infection with the virus that causes COVID-19. We won't know how long immunity lasts after vaccination until we have more data on how well COVID-19 vaccines work in real-world conditions.

Submit question in the Q & A feature



SAINT LOUIS UNIVERSITY
—
SCHOOL OF MEDICINE
—
OFFICE OF DIVERSITY, EQUITY
AND INCLUSION

Can you get Covid-19 once you get the vaccine?

It typically takes a few weeks for the body to build immunity (protection against the virus that causes COVID-19) after vaccination. That means it's possible a person could be infected with the virus that causes COVID-19 just before or just after vaccination and still get sick.

Submit question in the Q & A feature



SAINT LOUIS UNIVERSITY
—
SCHOOL OF MEDICINE
—
OFFICE OF DIVERSITY, EQUITY
AND INCLUSION

How can people trust the vaccine in underprivileged communities with the history of being mistreated and tested on in the past?

The choice to be vaccinated for COVID-19 is a personal one. It's vital to have a relationship with your primary care physician and to ask questions and raise concerns until you have answers that allow you to make a good decision for yourself.

Submit question in the Q & A feature



SAINT LOUIS UNIVERSITY
—
SCHOOL OF MEDICINE
—
OFFICE OF DIVERSITY, EQUITY
AND INCLUSION

Explain eschatology and what does it have to do with the COVID-19 vaccine?

Eschatology is the part of theology concerned with death, judgment, and the final destiny of the soul and of humankind. Many within the religious community believe that a global vaccination leads us one step closer to a one-world government.

Submit question in the Q & A feature



SAINT LOUIS UNIVERSITY
—
SCHOOL OF MEDICINE
—
OFFICE OF DIVERSITY, EQUITY
AND INCLUSION

If I take the vaccine am I also accepting the mark of the beast?

According to the bible the mark of the beast is a number. Receiving this vaccine does not equate to accepting the mark of the beast.

Submit question in the Q & A feature



SAINT LOUIS UNIVERSITY
—
SCHOOL OF MEDICINE
—
OFFICE OF DIVERSITY, EQUITY
AND INCLUSION

What are some of the concerns you are hearing from parishioners and how have you addressed them?

Pastor Charles Norris' comments

Submit question in the Q & A feature



SAINT LOUIS UNIVERSITY
—
SCHOOL OF MEDICINE
—
OFFICE OF DIVERSITY, EQUITY
AND INCLUSION

Have you noticed any differences between the older and younger populations in their openness to be vaccinated?

Pastor Charles Norris' comments

Submit question in the Q & A feature



SAINT LOUIS UNIVERSITY
—
SCHOOL OF MEDICINE
—
OFFICE OF DIVERSITY, EQUITY
AND INCLUSION

Where can I get a vaccine and when?

Visit [MOSTopsCOVID.com](https://www.mostopsCOVID.com) to find out when you are eligible to receive the vaccine and locations offering vaccinations. In the St. Louis area, selected health care systems include BJC Healthcare, SSM Health, Mercy St. Louis, St. Luke's Hospital and the St. Louis County Health Department.

Submit question in the Q & A feature

WHEN CAN I GET VACCINATED?

The state of Missouri is currently working to vaccinate residents that are eligible under our phased approach.

COVID-19 Vaccine Availability

Phase 1A	Phase 1B	Phase 2	Phase 3
Long-Term Care Facility Residents and Staff	Tier 1 First Responders & Emergency	Accelerating Economic Recovery	All Missouri Residents
Healthcare Workers (Patient Facing)	Tier 2 High Risk Individuals	Disproportionately Affected Populations	
EMS/EMT/Paramedics	Tier 3 Critical Infrastructure	Homeless	

Phase 1B – Tier 1

Protecting those who keep us safe and help us during an emergency

Public Health Administrators and Staff
Law Enforcement
Fire Services
Corrections
Emergency Management
Public Works
Emergency Services

Tier 1

Phase 1B – Tier 2

Protecting those who are at increased risk for severe illness

Anyone 65 and older
Any adults with:

- Cancer
- Chronic Kidney Disease
- COPD
- Heart Conditions
- Weakened immune system due to organ transplant
- Severe obesity (BMI >40)
- Pregnancy
- Sickle Cell Disease
- Type 2 Diabetes Mellitus
- Individuals with intellectual and/or developmental disabilities such as Down Syndrome

Tier 2

Phase 1B – Tier 3

Protecting those who keep the essential functions of society running

Education (K-12)
Childcare
Communications Infrastructure
Dams Sector
Energy Sector
Food & Agriculture Sector 1
Government
Information Technology
Nuclear Reactor Sector
Transportation Systems
Water and Wastewater Systems

Tier 3

Resources

American Academy of Family Physicians (AAFP) - familydoctor.org

BJC Healthcare – BJC.org

Centers for Disease Control and Prevention (CDC) – cdc.gov

Illinois Department of Public Health - dph.illinois.gov

Mercy – Mercy.net or 1-833-364-6777

Missouri Department of Health and Senior Services - health.mo.gov

National Institutes for Health (NIH) - nih.gov

National Medical Association (NMA) - nmanet.org

SLUCare Physician Group – SLUCare.edu

SSM Health – SSMHealth.com

St. Louis City Department of Health - stlouis-mo.gov



SAINT LOUIS UNIVERSITY
—
SCHOOL OF MEDICINE
—
OFFICE OF DIVERSITY, EQUITY
AND INCLUSION

SLU.edu/medicine/diversity

A recording of this webinar will be available on the News and Events page of our website.

**Building Public Confidence:
Debunking the COVID-19 Vaccine Myths 2.0**
Tue, Mar 16 – 4:30-5:30pm
Registration will be posted on our website.



SAINT LOUIS UNIVERSITY

—
SCHOOL OF MEDICINE

—
**OFFICE OF DIVERSITY, EQUITY
AND INCLUSION**

Questions: ODEI@health.slu.edu