

Non-Profit Org.
U.S. Postage
PAID
St. Louis, MO
Permit No. 1455



Practical Anatomy & Surgical Education
3839 Lindell Boulevard • St. Louis, Missouri, USA • 63108-3413

MASTER TECHNIQUES IN
PERI-ORBITAL
AESTHETIC SURGERY

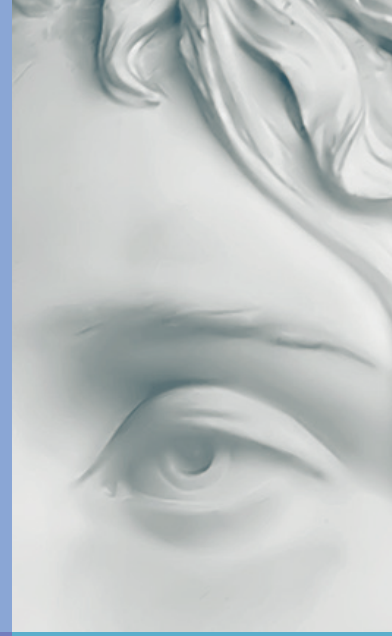
2020
Hands-on Cadaver
Workshop

January 17-18, 2020
slu.edu/medicine/pase



JANUARY 17-18, 2020
ST. LOUIS, MISSOURI, USA

MASTER TECHNIQUES IN
PERI-ORBITAL
AESTHETIC SURGERY



Hands-on Cadaver
Workshop

Course Co-Directors:
Morris E. Hartstein, MD, FACS
John B. Holds, MD, FACS

Honored Guests
Jonathan M. Sykes, MD
Guy Massry, MD



**SAINT LOUIS
UNIVERSITY.**
— EST. 1818 —

An offering through: Practical Anatomy & Surgical
Education, Department of Surgery
Saint Louis University School of Medicine

slu.edu/medicine/pase

Friday, January 17

7:00 AM - 5:00 PM

Browlift/ Upper Blepharoplasty/ Injectables

- Evaluation of the Aging Face
- Anatomy and Biomechanics of Brow lifting
- External Brow Pexy/Temporal Direct Brow Lift/Temporal Brow Endo Approach
- 3-D Cadaver Demonstration: Simplified Non-Endoscopic Browlift
- Questions
- **Hands-on Cadaver Dissection: Browlifting Procedures (Endoscopic/Nonendoscopic)**
- Clinical Implications of Eyelid and Periorbital Anatomy
- Upper Blepharoplasty – Keeping it Healthy and Natural
- 3-D Cadaver Demonstration: Upper Blepharoplasty with Fat Repositioning, Brow Fat Pad Suspension
- Applied Periorbital Anatomy for Fillers and Fat
- Fat Transfer Techniques
- How to Fix the Dysmorphic Lower Lid after Filler
- Enhancing the Periorbital Region with Neurotoxins
- Periorbital Filling Video/ Discussion
- Questions and Answers
- **Hands-on Cadaver Dissection: Upper Blepharoplasty**
- Aesthetic Skeletal Surgery
- Avoiding and Managing Upper Blepharoplasty Complications
- Welcome Reception

Saturday, January 18

7:15 AM - 3:30 PM

Lower Blepharoplasty/ Canthopexy/Canthoplasty

- Lower Lid Anatomy – Crucial Points
- Lower Blepharoplasty – Blending the Lid/Cheek Junction
- 3-D Cadaver Demonstration: Lower Blepharoplasty with Fat Repositioning/Fat Transfer Techniques/Fillers/Injectables/Trans-eyelid Midface Lifting
- Periorbital Eyelid and Canthal Irregularities: What Tough Cases have Taught Me
- 3-D Cadaver Demonstration: Canthopexy and Canthoplasty
- **Hands-on Cadaver Dissection: Lower Blepharoplasty with Fat Repositioning/ Trans-eyelid Midface Lifting, Canthopexy and Canthoplasty**
- Optional Session: "Filler VS Surgery" – Panel Discussion
- How to Avoid Facial Filler Complications
- Transcutaneous Lower Lid Blepharoplasty: Where/When/How?
- Festoon Excision
- My 20 Year Experience with Lower Lid Blepharoplasty
- The Unhappy Post-Blepharoplasty Patient
- My 20 Year Experience with Mid Face-lifting
- Pulling it All Together (Video)
- Questions and Answers/Course Wrap Up/Evaluations
- **Optional Hands on Cadaver Dissection continued: Open Lab without Supervision Continued Periorbital Procedures**

Course Co- Directors

Morris E. Hartstein, MD, FACS

Associate Clinical Professor
Department of Ophthalmology
Saint Louis University School of Medicine
St. Louis, MO

John B. Holds, MD, FACS

Clinical Professor
Departments of Ophthalmology
and Otolaryngology, Head and Neck Surgery
Saint Louis University School of Medicine
Ophthalmic Plastic and Cosmetic Surgery, Inc.
St. Louis, MO

Honored Guests

Guy Massry, MD

Ophthalmic Plastic & Reconstructive Surgery
Beverly Hills, CA

Jonathan Sykes, MD

Professor and Director, Facial Plastic Surgery
U C Davis Medical Center
Past President, AAFPRS

Invited Faculty:

Gregory H. Branham, MD, FACS

Professor and Chief, Facial Plastic and
Reconstructive Surgery
Department of Otolaryngology –
Head and Neck Surgery
Washington University School of Medicine
St. Louis, MO

John J. Chi, MD

Associate Professor
Division of Facial Plastic & Reconstructive Surgery
Department of Otolaryngology – Head & Neck Surgery
Washington University in St. Louis –
School of Medicine
St. Louis, MO

Gabriela M. Espinoza, MD

Associate Professor
Department of Ophthalmology
Saint Louis University School of Medicine
St. Louis, MO

Jill A. Foster, MD, FACS

Associate Clinical Professor
The Ohio State University
Eye Center of Columbus
Nationwide Children's Hospital
Columbus, OH

David E.E. Holck, MD, FACS

Clinical Associate Professor of Ophthalmology
University of Texas San Antonio
EyePLASTX
San Antonio, TX

Eva A. Hurst, MD, FAAD

Associate Professor of Dermatology
Division of Medicine/Dermatology
Director, Center for Dermatologic & Cosmetic Surgery
Washington University School of Medicine
St. Louis, MO

L. Mike Nayak, MD

Nayak Plastic Surgery
St. Louis, MO

EDUCATIONAL OBJECTIVES

The workshop has been designed to provide Cosmetic Facial Surgeons and Dermatologists a comprehensive overview of the surgical and nonsurgical rejuvenation techniques for the Periorbital area.

- Understand the role of adjunctive techniques, to include fillers and fat transfer that enhance the results in eyelid and periorbital surgery.
- Discuss how to perform safe and aesthetic eyelid and periorbital surgery by covering safety of anesthesia, incision placement, multiple technical options and postop care along with management of complications.
- Observe surgical demonstrations of each procedure performed by the renowned faculty
- Discuss and perform each procedure in the cadaver laboratory with assistance from the experts.

CONTINUING EDUCATION

Accreditation: Saint Louis University School of Medicine is accredited by the Accreditation Council for Continuing Medical Education (ACCME) to provide continuing medical education for physicians.

Credit Designation: Saint Louis University School of Medicine designates this live activity for a maximum of 16.75 AMA PRA Category 1 Credit(s)™. Physicians should only claim credit commensurate with the extent of their participation in the activity.

REGISTRATION:

For Further Course Details and REGISTRATION Click On (or type in your internet browser) the link below:
<http://pa.slu.edu>

This workshop will be held at the PASE Learning Center located in Young Hall, 3839 Lindell Boulevard, Saint Louis, MO 63108

TUITION FEES:

Physicians: \$1895
Residents/Fellows/USA Military: \$995

The education the participant gains through our CME activities does not satisfy training requirements to perform the surgery.

Allan E. Wulc, MD, FACS

W Cosmetic Surgery
Clinical Associate Professor of Ophthalmology
Scheie Eye Institute, University of Pennsylvania
Adjunct Clinical Professor of Otolaryngology
Temple University
Plymouth Meeting, PA



Faculty subject to change, for updates, please go to slu.edu/medicine/pase