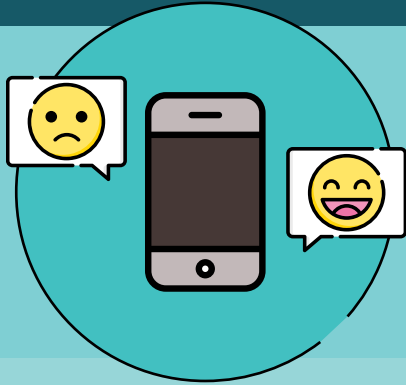


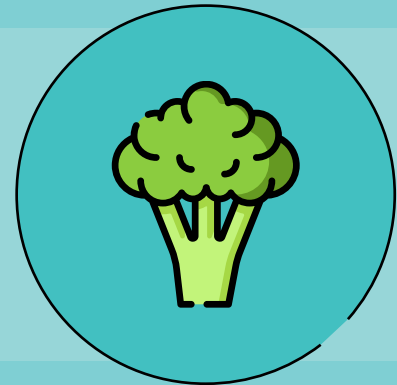
# Coping with stress during the 2019-nCoV outbreak



It is normal to feel sad, stressed, confused, scared or angry during a crisis.

Talking to people you trust can help. Contact your friends and family.

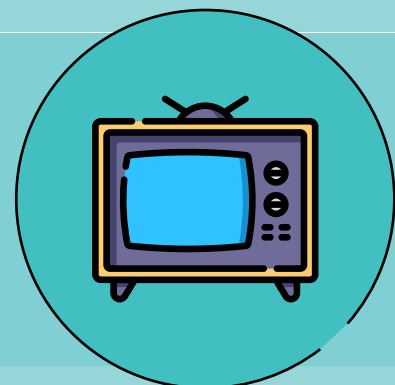
If you must stay at home, maintain a healthy lifestyle - including proper diet, sleep, exercise and social contacts with loved ones at home and by email and phone with other family and friends.



Don't use smoking, alcohol or other drugs to deal with your emotions.

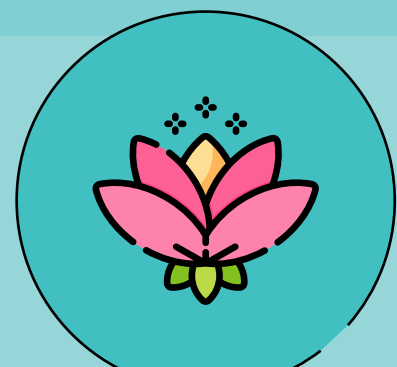
If you feel overwhelmed, talk to a health worker or counsellor. Have a plan, where to go to and how to seek help for physical and mental health needs if required.

Get the facts. Gather information that will help you accurately determine your risk so that you can take reasonable precautions. Find a credible source you can trust such as WHO website or, a local or state public health agency.



Limit worry and agitation by lessening the time you and your family spend watching or listening to media coverage that you perceive as upsetting.

Draw on skills you have used in the past that have helped you to manage previous life's adversities and use those skills to help you manage your emotions during the challenging time of this outbreak.



# Show-Me Hope Disaster Distress Helpline

Call  
**1-800-985-5990**

Text  
"TalkWithUs"  
to 66768

Counselors available 24/7

SHOW-ME  
**HOPE**  
MISSOURI

[MoShowMeHope.org](http://MoShowMeHope.org)

Follow Us:

Missouri Show Me Hope  
Crisis Counseling Program



## Direct Contacts for Eastern Missouri

Agency	Hopewell Center	Places for People	BJC Behavioral Health
Geographic Area	North City/County	South City/County	Mid-City/County
Population Emphasis	Seniors	Unhoused	Children/Youth & their Caregivers
Cell Phone	314-629-0220 (Angie)	314-409-2282 (Leon)	314-295-4878 (Angie)
Email	<a href="mailto:ablumenthal@hopewellcenter.com">ablumenthal@hopewellcenter.com</a>	<a href="mailto:lfarrar@placesforpeople.org">lfarrar@placesforpeople.org</a>	<a href="mailto:angela.liefer@bjc.org">angela.liefer@bjc.org</a>