

SLU SUBSTATION SITE LOGISTICS PLAN

DESCRIPTION

Dates: 12/13/18 - 1/13/19

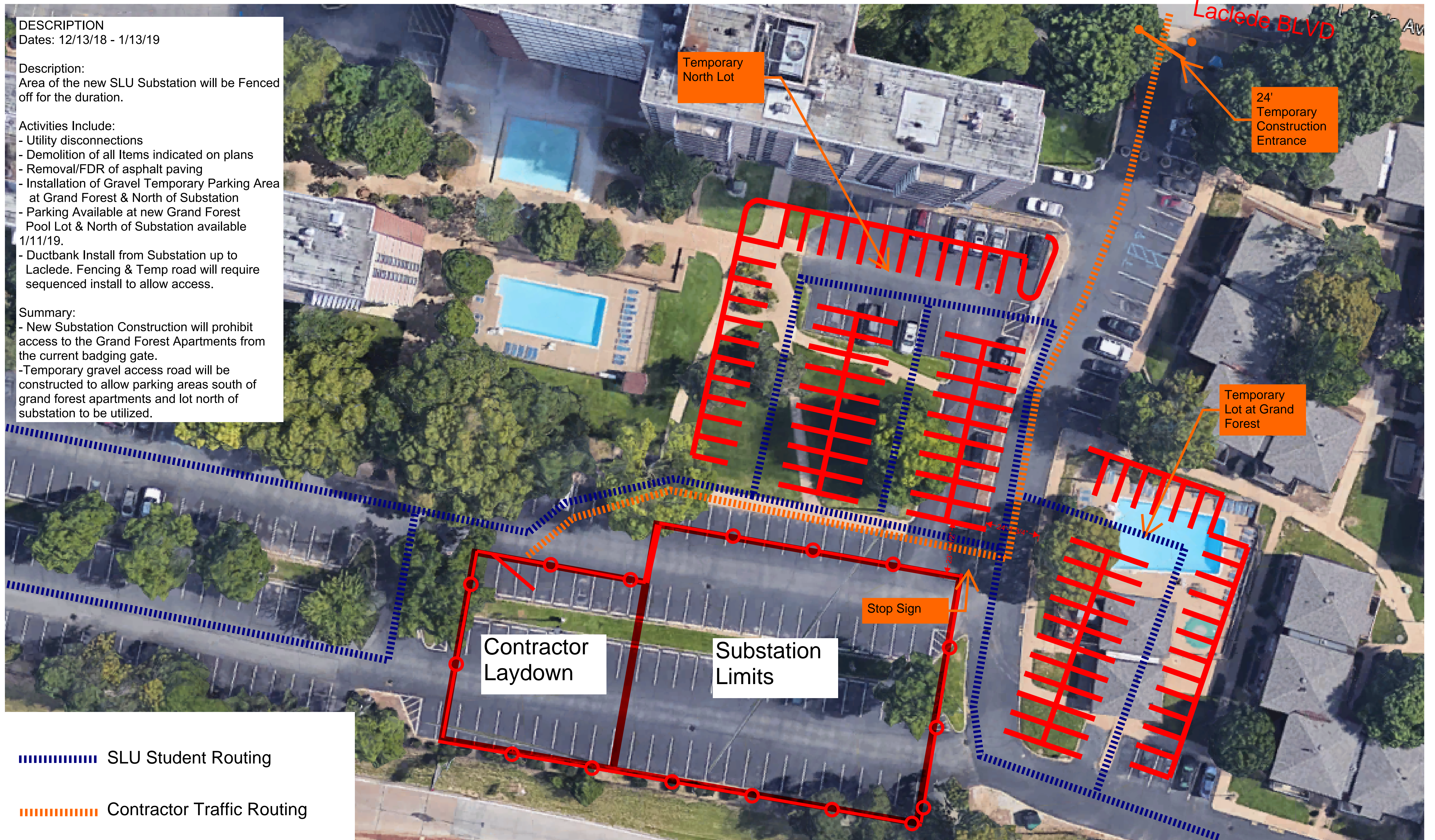
Description:
Area of the new SLU Substation will be Fenced off for the duration.

Activities Include:

- Utility disconnections
- Demolition of all Items indicated on plans
- Removal/FDR of asphalt paving
- Installation of Gravel Temporary Parking Area at Grand Forest & North of Substation
- Parking Available at new Grand Forest Pool Lot & North of Substation available 1/11/19.
- Ductbank Install from Substation up to Laclede. Fencing & Temp road will require sequenced install to allow access.

Summary:

- New Substation Construction will prohibit access to the Grand Forest Apartments from the current badging gate.
- Temporary gravel access road will be constructed to allow parking areas south of grand forest apartments and lot north of substation to be utilized.



■■■■■■■■■■ SLU Student Routing

■■■■■■■■■■ Contractor Traffic Routing