

The 2nd Annual Cutting Edge Inpatient Medicine Conference 2021

ADVANCED PRACTICE NURSING CONTACT HOURS: 7.5

Registration fees: Early Bird pricing \$200 through October 8, 2021



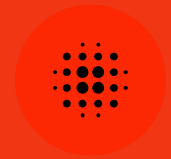
VIRTUAL ZOOM CONFERENCE

DATE: FRIDAY, NOVEMBER 5, 2021

TIME: 8:00AM - 4:30 PM CST

**PRESENTED BY SAINT LOUIS UNIVERSITY TRUDY BUSCH
VALENTINE SCHOOL OF NURSING**

2nd Annual Cutting Edge Inpatient Medicine Conference 2021



FRIDAY

NOVEMBER 5, 2021: 8:00-4:30

LEARNING OUTCOMES

After attending this conference, our learners will self report an increase in knowledge on:

- Analyzing and interpretation of complex 12-lead ECGs.
- Management of dysnatremias
- Pearls and pitfalls of antibiotic use in the acute care setting.
- Interpreting complex imaging.
- Neurological emergencies
- Hemorrhagic shock and resuscitation.

SESSIONS



THE 12- LEAD ECG IN ACUTE CARE: UNRAVELING THE MYSTERIES BEYOND THE BASICS

Joanne Thanavaro DNP, RN, AGPCNP-BC, AGACNP-BC, DCC, FAANP

The complexity of today's patient can challenge even the most experienced healthcare provider. This presentation will go beyond the basics of 12 Lead ECG interpretation and provide complicated clinical scenarios that demand expert clinical reasoning and judgement. You will enhance your critical thinking skills and improve your ability to analyze case studies and interpret ECG findings such as ischemia and infarct patterns, pericarditis, cardiac tamponade, left main proximal LAD disease, atrial fib with WPW, Takotsubo cardiomyopathy, and changes associated with pulmonary embolism.

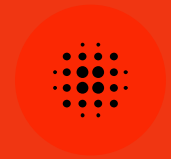


DYSNATREMIAS - WHAT CAUSES THEM AND HOW SHOULD THEY BE TREATED?

Gerelyn Ochs MSN, APRN, AGACNP-BC, ANP-BC, FAANP

This session will review normal sodium hemostasis and then look at hyponatremia and hypernatremia including it's diagnosis and management. Case studies throughout the presentation will demonstrate risk management pitfalls for sodium emergencies and allow participants to critically work through the scenarios

2nd Annual Cutting Edge Inpatient Medicine Conference 2021



RESPONDING TO MASSIVE HEMORRHAGE: WHOLE BLOOD AND DAMAGE CONTROL RESUSCITATION

Lew Griffith APRN, Acute Care NP, M.S. Experiential Ed

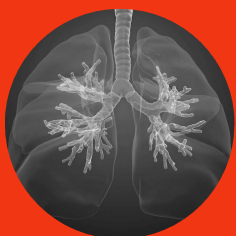
The advanced practice nurse in the acute care setting responds to emergencies of varying degrees. This session will discuss the advanced practice nurse's management of hemorrhagic shock including choice of resuscitation fluids, blood products, and adjuncts to aid in hemostasis.



PEARLS AND PRESCRIBING ANTIBIOTICS IN ACUTE CARE

Karen Scaglione, DNP, APRN, AGACNP-BC, ACNP-BC, CLNC

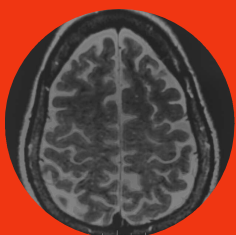
This session will introduce the Do's and Don'ts of antibiotic stewardship, Pearls of antibiotic therapy, 4 moments of antibiotic decision making, antibiotics in acute care, and understanding current approaches to optimizing antimicrobial dosing in the Intensive Care Unit. Case Studies will be discussed as well.



MASTERING ADVANCED IMAGING CONCEPTS

Bradley K. Baker, MD

This session will examine various case studies while focusing on the most common diagnosis seen on radiological imaging including X-rays, CT scans and MRIs. Along with examining the images, we will focus on the next steps after obtaining the necessary studies such as diagnosis, management and referral.



INPATIENT ACUTE NEUROLOGIC EMERGENCIES

Sheila Serra Arackal, MSN, APRN, AGACNP-BC

This session will refresh learners with basic neuro anatomy, neuro-imaging/diagnostic modalities, and focused neurologic assessment skills to guide them in approaching acute neurologic emergencies in the inpatient setting. The session will include scenarios highlighting recognition, stabilization, and facilitation of care of neurologic emergencies such as acute ischemic stroke, intraparenchymal hemorrhage, acute hydrocephalus, and neuromuscular respiratory failure.

For more information or to register:
<https://www.slu.edu/nursing/continuing-education.php>

If participants are unable to attend the conference live, a recording will be provided on demand for 14 days following the live event.

Saint Louis University Trudy Busch Valentine School of Nursing is approved as a provider of nursing continuing professional development by the Midwest Multistate Division, an accredited approver by the American Nurses Credentialing Center's Commission on Accreditation. Midwest
MSD Provider Approval #MO224-3