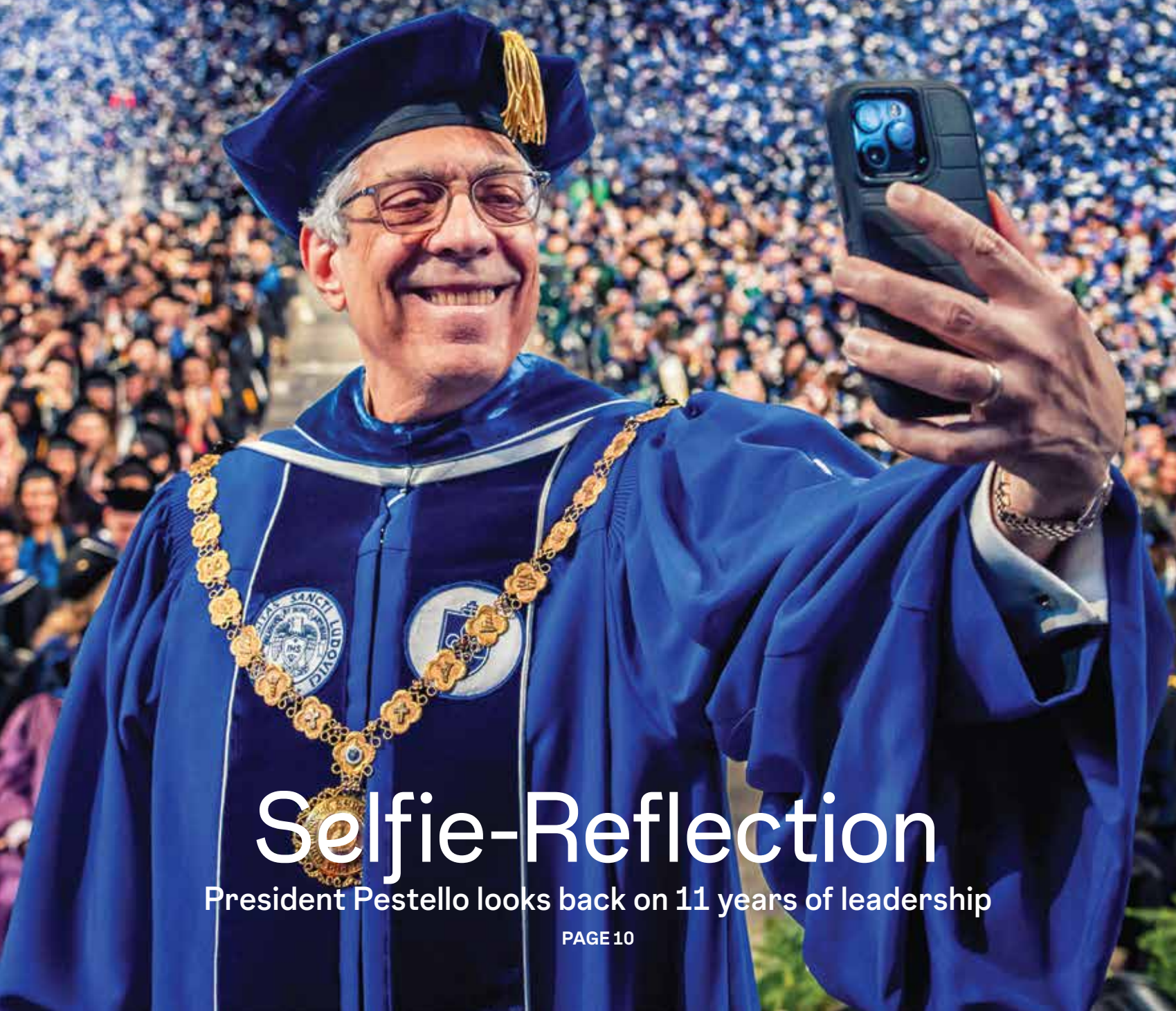


# UNIVERSITAS

THE ALUMNI MAGAZINE OF SAINT LOUIS UNIVERSITY

SUMMER 2025



## Selfie-Reflection

President Pestello looks back on 11 years of leadership

PAGE 10



# 10

## Selfie-Reflection

In a candid Q&A, outgoing President Dr. Fred P. Pestello looks back on his time at SLU.  
— by Laura Geiser

# 18

## Reaching Research 1

SLU's new R1 classification affirms its place among elite U.S. research universities.  
— by Clayton Berry

# 22

## Moments and Milestones

Recapping the events, achievements and challenges SLU faced during the last 11 years.  
— by Amy Garland

President Dr. Fred P. Pestello and First Lady Dr. Fran Pestello exit SLU's commencement ceremony for the last time on May 17.

PHOTO BY SARAH CONROY

## 2

### ON CAMPUS

Introducing  
Dr. Edward Feser  
Commencement  
Center for  
Bosnian Studies  
MLA honor  
\$10 million gift  
Softball history

## 30

### CLASS NOTES

How I Got Here:  
Dr. Tiffany (Brown) Anderson  
(Ed '94, Grad Ed '01)  
— By Amy Garland

## 34

### Alumni Merit Awards

## 35

Alumni Spotlight:  
Andy Hahn (A&S '97)  
— by Debbie Dugan

## 37

### IN MEMORIAM

## 41

### THE LAST LOOK

## UNIVERSITAS

VOLUME 51, ISSUE 2

### EDITOR

Laura Geiser  
(A&S '90, Grad '92)

### ASSOCIATE EDITOR

Amy Garland (A&S '97)

### ART DIRECTOR

Matt Krob

### ON CAMPUS NEWS STORIES

University Public Relations  
Billiken Media Relations

### ON THE COVER

SLU President Dr. Fred P. Pestello takes a selfie as confetti falls during his final commencement as president on May 17.  
Photo by Sarah Conroy

*Universitas* is published by Saint Louis University. Opinions expressed in *Universitas* are those of the individual authors and not necessarily those of the University administration. Unsolicited manuscripts and photographs are welcome but will be returned only if accompanied by a stamped, self-addressed envelope. Letters to the editor must be signed, and letters not intended for publication should indicate that fact. The editor reserves the right to edit all items.

### Address:

*Universitas*  
DuBourg Hall 39  
1 N. Grand Blvd.  
St. Louis, MO 63103

### Email address:

universitas@slu.edu

Website: [slu.edu/universitas](http://slu.edu/universitas)

*Universitas* is printed by  
Progress Printing Plus

Worldwide circulation:  
103,000

©2025, Saint Louis University  
All rights reserved.

Reproduction in whole  
or in part without  
permission is prohibited.

## Message from the First Lady

**B**eginnings and endings are filled with anticipation and a sense of adventure. What is next is unknown and ready to be created.

Eleven years ago, Fred and I drove into St. Louis ready to begin his tenure as SLU's first lay president and my role as the first first lady. We are now approaching the day when we step out of our roles and begin a new chapter of our lives in this great city.

As we move toward this momentous transition, it is gratifying to take stock of the accomplishments we have marked and the challenges we have faced together. As Fred notes in his interview (page 10), SLU and Midtown have grown and transformed in remarkable ways — strengthened and sustained by SLU's Jesuit mission and values.

I had the joy of creating the role of first lady at this historic institution, bringing my own experience as a scholar of sociology and a former department chair to the work. It was a privilege to join the SLU community as we celebrated the milestones and responded to the challenges of the last decade.

In one of my favorite events during our time at SLU, we honored the University's bicentennial with a moving Mass under the Gateway Arch.

On numerous occasions, we were warmly welcomed to the Madrid campus, and we have cherished getting to know the people and the city that make SLU-Madrid so special.

I had the opportunity to help the St. Louis Literary Award, one of the first initiatives I was invited to support, become more embedded in the life of the Saint Louis University campuses.

We responded to the unprecedented challenges of the COVID-19 pandemic — with me teaching, virtually and then in person, and Fred leading the University in those early days of lockdown from the third floor of our house.



SARAH CONROY

In 2017, we began a new tradition, joining students, faculty, staff and alumni to bless and light the tree each December at Christmas on the Quad. We also hosted an annual Christmas dinner for the Jesuits who call our campus and our city home.

And at the end of every semester, Fred and I have wished students luck on their final exams with cookies, pretzels, ice cream or other study day treats.

We know there are many things we will miss as we leave our daily engagement with campus, but we are looking forward to engaging with St. Louis and campus in new ways in the years ahead.

I wish President-Elect Ed Feser and incoming First Lady Kathy Feser many blessings as they assume these roles, which Fred and I have loved and treasured.

I thank you, Billikens, for filling the past 11 years with grace, joy and countless memorable moments.

*Frances P. Pestello*

Dr. Frances G. Pestello  
First Lady



On campus

Introducing SLU’s Next President

Dr. Edward J. Feser, a Roman Catholic, Jesuit-educated leader in higher education, will become Saint Louis University’s 34th president on July 1.

“Saint Louis University is a remarkable institution with an impressive history of impact, and it will be both exciting and a privilege to lead it,” Feser said. “I am thrilled at the prospect of joining the SLU community and contributing to the University’s outstanding legacy.”

Feser grew up in the Pacific Northwest and attended a Catholic high school in Red Bluff, California. He earned a bachelor’s degree from the University of San Francisco, a fellow Jesuit institution, before graduate school at the University of North Carolina at Chapel Hill.

He comes to SLU after eight years as provost and executive vice president at Oregon State University (OSU), a land-grant institution with more than 38,000 students, a \$1.8 billion budget and \$480 million annually in externally funded research.

“Dr. Feser’s leadership journey has been defined by a steadfast belief in the power of education to transform the lives of individuals and contribute to flourishing communities,” said Eric Engler, chair of SLU’s board of trustees.

The board of trustees voted to approve Feser’s appointment during its December 2024 meeting. He and his wife, Kathy Feser, kicked off SLU’s spring semester with a visit to campus in mid-January. Nearly 1,000 members of the SLU community attended events to welcome them in person.

“Throughout these interactions, Kathy and I heard your love for Saint Louis University and your commitment to its Jesuit mission,” Feser said in a message to the SLU community. “We are — more than ever — thrilled to become Billikens.”

ADVANCING EXCELLENCE IN ALL THINGS

Feser’s time at Oregon State has been defined by initiatives that reshaped OSU’s trajectory, including:

- **Strategic Vision:** Leading the development and implementation of strategic plans focused on student success, research and institutional innovation.
- **Research Leadership:** Championing a \$213 million Collaborative Innovation Complex — now under construction — to foster interdisciplinary research, powered by artificial intelligence and accelerated computing, and expanding arts and humanities programs.
- **Inclusive Excellence:** Achieving record-setting diversity in student enrollment while working to diversify the faculty and embed equity and inclusion across OSU’s operations.
- **Budgetary Innovation:** Implementing a new shared responsibility budget model to advance transparency and financial stability.

GUIDED BY SERVICE, COMMITTED TO COMMUNITY

Throughout his career, Feser’s leadership has been rooted in the Jesuit ideals of promoting justice, nurturing the whole person and contributing to the greater good.

“I am deeply grateful to Dr. Feser for his willingness to serve in such an important role. His experience as a scholar and administrator makes him uniquely qualified to lead a place as complex as SLU,” said Thomas P. Greene, S.J., the provincial superior of the Jesuits USA Central and Southern Province. “But even more, I was heartened to hear of his desire to use education to engender hope in the young, his commitment to the University being leaven for the city and his dedication to the University’s Jesuit, Catholic identity.”

“The rigorous and holistic Jesuit education I received at the University of San Francisco — grounded in experiential learning in the city itself and the principle that one should lead an active life of service to others, especially the least among us — shaped my values in ways too many to count,” Feser said.

A scholar of city and regional economic growth and development, Feser strongly believes that all universities must be partners in serving and improving the well-being of the communities they call home. At OSU, his community-focused efforts included:

- **Downtown Hub:** Opening the OSU Portland Center in downtown Portland, which anchors the university’s strategy in the city, including programs to support expanded pathways to OSU for students from diverse backgrounds.
- **Community Partnerships:** Growing the OSU-Cascades campus in Bend, Oregon, and collaborating with local leaders to launch the development of a campus-based innovation district to support regional economic development goals.
- **Economic Development Leadership:** Serving on boards and commissions to address economic development, workforce strategies and public policy challenges.

SARAH CONROY



BUILDING ON PAST PROGRESS AND CHARTING A PATH FORWARD

Feser’s appointment follows an extensive national search led by a committee of SLU trustees, faculty, staff, students and members of the Society of Jesus. The University’s board of trustees voted to approve his appointment during its Dec. 6 meeting.

Feser will succeed Dr. Fred P. Pestello, who announced in March 2024 that he would step down at the end of June 2025.

“President Pestello’s vision and outstanding leadership are evident in the success of SLU students, its excellent faculty and staff, its impressive growth in research scale and impact, the depth and quality of its partnerships and impact in St. Louis, and the achievements of Billiken student-athletes and teams,” Feser said. “I’m excited to work with the SLU community to build on Dr. Pestello’s accomplishments and advance Saint Louis University as one of the finest urban research universities in the country.”

“Dr. Feser has the knowledge, experience, skill and values to serve as the next steward of Saint Louis University’s noble mission — working for and with the campus and the region to create new possibilities for a thriving, hope-filled future,” Pestello said. ☒

Look for more on Dr. Edward Feser in the next issue of *Universitas*.

SLU’s President-Elect at a Glance

PERSONAL DETAILS

Dr. Edward J. Feser  
57 years old  
Married to Kathy Feser, a school district environmental sustainability coordinator  
Two adult children, Jack and Mary

EDUCATION

Ph.D., University of North Carolina at Chapel Hill, 1997  
M.R.P., University of North Carolina at Chapel Hill, 1994  
B.A., University of San Francisco, 1989

ACADEMIC LEADERSHIP HISTORY

**2017-2025** Provost and Executive Vice President, Oregon State University  
**2015-2017** Interim Vice Chancellor for Academic Affairs and Provost, University of Illinois at Urbana-Champaign  
**2012-2015** Dean, College of Fine and Applied Arts, University of Illinois at Urbana-Champaign  
**2011-2012** Division Head, Innovation, Management and Policy, Alliance Manchester Business School, University of Manchester, United Kingdom  
**2007-2011** Department Head, Urban and Regional Planning, University of Illinois at Urbana-Champaign

FACULTY APPOINTMENTS

**2017-2025** Professor, School of Public Policy, Oregon State University  
**2007-2017** Professor, Department of Urban and Regional Planning, University of Illinois at Urbana-Champaign  
**2008-2017** Professor, Department of Agricultural and Consumer Economics, University of Illinois at Urbana-Champaign  
**2011-2012** Professor and Eddie Davies Chair of Entrepreneurship, Alliance Manchester Business School, University of Manchester, United Kingdom  
**2004-2007** Associate Professor, Department of Urban and Regional Planning, University of Illinois at Urbana-Champaign  
**2003** Associate Professor, Department of City and Regional Planning, University of North Carolina at Chapel Hill  
**1997-2002** Assistant Professor, Department of City and Regional Planning, University of North Carolina at Chapel Hill





On campus

## Class of 2025 Celebrated at Spring Commencement

— photos by Sarah Conroy

Saint Louis University's commencement ceremony on May 17 at Chaifetz Arena featured outgoing President Dr. Fred P. Pestello as the speaker. In an address that highlighted his career from radio host to university administrator, he advised students: "Here is what matters, Billikens — wherever your path takes you: Continue to lead with love and mercy. And never vary from the quest to make 'things the way they ought to be.' I wish each of you as magnificent a journey as I have had."

The ceremony also included remarks from Emma Lercher, a student graduating from the College of Arts and Sciences, who encouraged the Class of 2025 to share their gifts.

SLU also conferred honorary degrees upon three individuals. This year's honorees were former trustee Patrick (CSB '77) and Peggy Sly, who were honored for their community support, and Tom Smolich, S.J., who was recognized for his leadership of the Jesuit Refugee Service.



SARAH CONROY



Jansen at the 2024 midyear commencement

### Accounting Prof Honored with Ring Award

Neil Jansen (Grad CSB '98), an associate professor of accounting, won the 2024 Nancy McNeir Ring Award for Excellence in Teaching.

He was recognized during the 2024 midyear commencement ceremony at Chaifetz Arena in December, during which he gave the commencement address.

After starting his career in the financial services industry, Jansen joined SLU in 2008. He has been the director of the Master of Accounting program since 2010 and an associate professor since 2024, winning several faculty and teaching excellence awards along the way.

The Nancy McNeir Ring Award, named for the University's first dean of women, was established in 1966 by SLU's chapter of Alpha Sigma Nu, the national Jesuit honor society.



FROM TOP: Doisy College of Health Sciences graduates Kirti Madhu (left) and Emma Pearl Capulong embrace during commencement; Pestello (back, center) and First Lady Dr. Fran Pestello (left) take a selfie with graduates after the ceremony; Sam Deeljore, a SLU employee and new graduate of the School for Professional Studies, hugs his daughters, Agni Deeljore (left), graduating from the School of Social Work, and Jaya Deeljore, graduating from the College of Arts and Sciences, before the ceremony.

## MED SCHOOL RECEIVES \$10 MILLION

Saint Louis University's School of Medicine has received a transformational \$10 million gift, one of the largest contributions in the school's history.

The gift came from a patient who wishes to remain anonymous in honor of Dr. Gerald A. Maguire (Med '91), a psychiatrist who also pledged \$100,000 to support his *alma mater*.

The \$10 million gift will enhance medical education and research at SLU:

- \$3 million to establish the Gerald A. Maguire, M.D., and Joanne S. Maguire School of Medicine Cura Personalis Endowed Deanship

- \$2 million to fund the Gerald A. Maguire, M.D., and Joanne S. Maguire Endowed Chair in Neuropsychiatry Research and Education

- \$5 million directed toward a future state-of-the-art health education center

Maguire is the director of residency training in psychiatry at College Medical Center, a teaching hospital in Long Beach, California, and the faculty director of graduate medical education at Oroville Hospital, which serves his rural home community in Northern California.

Co-author of *Without Hesitation: Speaking the Silence and Science of Stuttering*, Maguire is considered the world's leading authority on the pharmacologic treatment of stuttering. He founded the first clinic dedicated to the scientific study and medical treatment of the condition.



SARAH CONROY

FROM LEFT: Edward Ibur, executive director of the St. Louis Literary Award, Dr. Cathleen Fleck, chair of the visual and performing arts department, and Pestello discuss the sculpture at its unveiling in April.

### Pestellos Gift New Sculpture to SLU

Before stepping down as Saint Louis University's president this summer, Dr. Fred P. Pestello and First Lady Dr. Fran Pestello offered a gift to SLU.

During a reception in Pius XII Memorial Library in April, the Pestellos helped unveil a new sculpture they donated to the University: "Land, Labor, Legacy" by Kyle and Kelly Phelps. The sculpture is about 20 inches tall and features four adult figures, one holding a child. The figures represent enslaved persons of African descent and members of the Osage Nation.

"We know the importance of art to inspire, to provoke, to deepen understanding," Fred Pestello said. "This work speaks to us, and it speaks to the mission of this institution."

The Pestellos met the Phelps brothers more than two decades ago, when Fred Pestello hired them to teach at the University of Dayton. Their work is in the NAACP National Headquarters as well as in the permanent collections of art museums in Racine, Wisconsin; Asheville, North Carolina; Canton, Ohio; and San Angelo, Texas.

### SLU Joins Center for Research Libraries

Last August, Saint Louis University Libraries joined the Center for Research Libraries (CRL), an international consortium of more than 200 university, college and independent research libraries.

Jennifer Nutefall, dean of libraries and museums, said the CRL gives the SLU community access to the resources of the other consortium members. She sees membership in CRL as recognition of the quality of work throughout SLU's libraries.

CRL member institutions include Harvard University, Carnegie Mellon University, the University of Notre Dame and the University of California system.



On campus



SARAH CONROY

ENGLISH PROFESSOR WINS PRESTIGIOUS MLA PRIZE

Dr. Jonathan Sawday received the James Russell Lowell Prize for the most outstanding book published in 2023, for *Blanks, Print, Space, and Void in English Renaissance Literature: An Archaeology of Absence*.

The prize is the Modern Language Association's top honor. Sawday, who joined SLU in

2009 and holds the Walter J. Ong, S.J., Chair in Humanities in the English department, is the 55th recipient of the award and the first from SLU to receive the honor.

SLU CELEBRATES TRUMAN SCHOLAR

Sam Aitchison is the sixth student in Saint Louis University history to be honored with the prestigious Truman Scholarship.

Aitchison, a junior majoring in finance, leadership and human resource management, and Catholic studies, is one of 54 college students from 49 U.S. colleges and universities selected as 2025 Truman Scholars. The award is the premier graduate scholarship for aspiring public service leaders in the United States.

He plans to pursue a master's degree in secondary or higher education with the goal of teaching and, eventually, working in administration.



SARAH CONROY

Provost Dr. Mike Lewis (left) and President Dr. Fred Pestello (right) congratulate Aitchison during a surprise visit to his class in April.

STUDENT EARNS PRESTIGIOUS GOLDWATER SCHOLARSHIP

Pascal Sikorski, a junior majoring in computer science, earned a Goldwater Scholarship, a national undergraduate award for students in STEM who intend to pursue a career in STEM research after graduation.

Sikorski wants to earn his doctorate in computer science and become a professor.

Last summer, he was a researcher at California Institute of Technology as a WAVE Fellow in the Advanced Mechanical Bipedal Experimental Robotics Lab. This year, he will conduct research at Oregon State University on robotic manipulation workflow alongside humans in the environmental sector.

Pestello (left) and Sikorski



SARAH CONROY

honors & awards

RESEARCHERS RECOGNIZED BY NATIONAL ACADEMY OF INVENTORS

The National Academy of Inventors (NAI) brings together academic inventors from across the country and recognizes their success in patents, licensing and commercialization of new technologies.

Four SLU researchers made the NAI's 2025 Class of Senior Members:

**Dr. Enrico Di Cera**, the Alice A. Doisy Professor and chairman of biochemistry and molecular biology, for thrombosis therapeutics

**Dr. Koyal Garg**, associate professor of biomedical engineering, for biomaterials treating traumatic muscle injuries

**Dr. Nicola Pozzi**, associate professor of biochemistry and molecular biology, for clotting disorder treatments and diagnostics

**Dr. Silviya Zustiak**, professor of biomedical engineering and pharmacology and physiology, for hydrogel-drug fabrication and delivery

SLU JOINS OAK RIDGE ASSOCIATED UNIVERSITIES CONSORTIUM

Saint Louis University joined the Oak Ridge Associated Universities (ORAU), a consortium of more than 160 colleges and universities that provides innovative solutions to advance priorities in science, education, security and health.

The consortium is connected to Oak Ridge National Laboratory, a federally funded research and development center in Oak Ridge, Tennessee, that is home to several of the world's most powerful supercomputers. Acceptance into the consortium provides SLU researchers with resources and opportunities for collaboration.

To join ORAU, a university must be among the nation's top research universities, as measured by inclusion in the top Carnegie categories or by inclusion in the top 200 institutions ranked by the National Science Foundation's research and development expenditure table. SLU met both requirements in 2024. (See story on page 18.)

Universities in ORAU also must offer doctoral degrees in multiple STEM disciplines for a minimum of five years before joining the consortium. Of SLU's 49 doctoral programs, 15 are in STEM fields.



SARAH CONROY

Whitehead speaks at the Sheldon Concert Hall in April after receiving the 2025 St. Louis Literary Award.

Literary Award Brings Renowned Writers to Campus

Pulitzer Prize-winning author Colson Whitehead received the 2025 St. Louis Literary Award from Saint Louis University on April 9.

"Read, read, read to find out what kind of writer you want to be. Write, write, write to find out what kind of a writer you are," Whitehead told audiences.

His novel *The Underground Railroad* won the National Book Award and the Carnegie Medal for Fiction. *The Nickel Boys* won the Pulitzer Prize, the Kirkus Prize and the Orwell Prize for Political Fiction.

Next year, Jhumpa Lahiri will come to St. Louis to accept the 2026 St. Louis Literary Award. Lahiri has written short stories, nonfiction, poetry and several novels, including *The Namesake*. Her Pulitzer Prize-winning collection of short stories, *Interpreter of Maladies*, will be the featured title for the 2026 Campus Read program. She will receive the award on April 8, 2026, and will offer a craft talk the following day; both events are open to the public.

Alum's Biopic in Theaters This Fall

This October, Saint Louis University alumni will get the chance to see the life of a fellow Billiken depicted on the big screen.

John O'Leary (CSB '99) came back to campus in 2023 for the filming of *Soul on Fire*, a major motion picture based on his 2016 bestseller *On Fire: The 7 Choices to Ignite a Radically Inspired Life*.

The film depicts how O'Leary nearly burned to death in an accident when he was 9 years old — and how his recovery shaped his life.

The movie was filmed in St. Louis, including several locations on SLU's campus. Members of the SLU community served as extras and shadowed the director and crew.

*Soul on Fire* is scheduled to debut in theaters across the country on Oct. 10, 2025.

ATHLETICS



BILL BARRETT

BILLIKEN SELECTED SECOND IN MLS SUPERDRAFT

SLU defender Max Floriani was selected second overall by the San Jose

Earthquakes in the December 2024 Major League Soccer (MLS) SuperDraft. He is the Billikens' highest draft pick since Brian McBride (Ed '96) and Matt McKeon (A&S '97) went first in the MLS Inaugural Player Draft and MLS College Draft, respectively, in 1996.

Floriani appeared in 56 matches over three seasons with the Billikens. He helped the Billikens to NCAA Men's Soccer Championship appearances in 2022 and 2024.

A total of 39 Billikens have been drafted by MLS teams.



PHOTO COURTESY OF THE ATLANTIC 10 CONFERENCE

**Softball Makes History:** The Saint Louis University softball team captured its first Atlantic 10 Conference Championship title on May 10. The Billikens made their first NCAA Championship appearance in program history in the Fayetteville Regional. The team's 34 victories were the second most in program history and included a school-record 15-game winning streak.



On campus

College Moves from South Campus to North

In January, the College for Public Health and Social Justice made a big move. Faculty, staff and students left Salus Center, packed up and headed north. The college now calls the second floor of the Marvin and Harlene Wool Center, near the northeast corner of Grand and Lindell boulevards, home. The second floor in the Wool Center underwent a renovation to become an academic space for the college, thanks to a grant from the Health Resources and Services Administration that helped convert the space. The new space includes common lounges, large classrooms, conference rooms, seminar spaces, break rooms, student workspaces and office space. The move took place at the end of the fall semester in December and involved five trucks moving 390 boxes over four days.

FERNANDO BÉJAR



Students in the lounge area in Manresa Hall

In addition to offices, the 10,763-square-foot space contains six classrooms, a conference room, a physics and computer engineering lab, a nursing lab, study rooms and a lounge area.

Scholarship Honors Late SLU Professor

Robert Steck (A&S '79) has established the Dr. George D. Wendel, Ph.D., Scholarship to honor the late professor. The endowed scholarship will benefit undergraduate political science students who are dedicated to the advancement of urban service. In 1956, Wendel joined SLU, and in 1968, he founded SLU's Center for Urban Programs, serving as its director until 1992. He died in 2000. "Dr. Wendel was a very important mentor to me in many ways that extended far beyond academics," Steck said. "He had a positive influence on so many people during his nearly 50-year SLU career, and it is truly an honor to play a part in leaving such a well-deserved legacy in his name." Steck encourages Wendel's former students to consider making a gift to the scholarship in his memory by contacting Meg Connolly at mary.connolly@slu.edu.

SLU-Madrid's Manresa Hall Welcomes Students

The newest building at Saint Louis University's Madrid campus opened its doors to students at the beginning of the 2024-25 academic year. Manresa Hall is the fourth SLU-Madrid building. It was acquired by the University in summer 2023 and provided office space for faculty and staff before undergoing construction and renovation to better suit the community's needs.

...more honors

SLU received a 2025 Senator Paul Simon Spotlight Award for Campus Internationalization by NAFSA: Association of International Education. The award recognized the SLU-Jesuit Worldwide Learning program that offers bachelor's degrees to students in refugee camps in Kenya and Malawi.

SLU received the 2024 Higher Education Excellence in Diversity Award from Insight Into Diversity magazine. The award was based on the recruitment and retention of students and employees, as well as support for other aspects of diversity, equity, inclusion and belonging.

SLU was designated as a "Voter Friendly Campus" by the Fair Elections Center's Campus Vote Project and NASPA – Student Affairs Administrators in Higher Education. The initiative recognizes institutions that have implemented nonpartisan practices that encourage students to register and vote.

Dr. Denise Côté-Arsenault, the Hemak Endowed Professor of Maternal Child Nursing, received a Fulbright Specialist Program award. Her project took her to the Centre of Postgraduate Medical Education in Poland to work with a group of Ph.D. midwives on their research on parent experiences with pregnancy and birth with life-limiting fetal diagnoses.

Dr. Thomas Finan, associate professor of history, received a Fulbright Specialist Award. Finan will work with colleagues at the University of Galway to create a joint database of archaeological and historical research focusing on Gaelic Ireland.

Chess Team Wins Spring 2025 Title

The Saint Louis University "A" chess team defeated the University of Missouri to win the Spring 2025 Collegiate Chess League (CCL) – SLU's fourth CCL title in the last five seasons. The CCL is the premier online chess competition for college students. The Billiken team consisted of all grandmasters. SLU beat Mizzou in the finals with a 10-2 win. The Billikens built such an insurmountable lead that the match only went three rounds.

"I'm very proud of the team's accomplishment," Head Coach Varuzhan Akobian said. "This was a dominating victory against our main rival. We won all our regular matches in the regular season and rolled through the playoffs to win the Spring 2025 CCL title."

Gifts Coincide with Education's 100-Year Anniversary

Pioneering Surgeon Gives \$7.3 Million

The School of Education received its largest gift from a donor: \$7.3 million from the late Dr. Virginia "Ginny" Herrmann (Med '74) to establish the Herrmann Center for Innovative Catholic Education. Herrmann was on the SLU medical school faculty for nearly two decades and then was a professor at Washington University in St. Louis.

The center will house several existing programs, including the Billiken Teacher Corps and SLU's Catholic educational leadership degree programs; conduct research to inform best practices in Catholic schools; and support local and global partnerships.

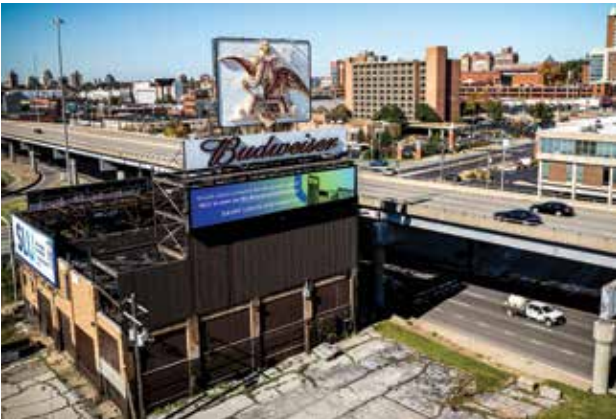
Bruemmer Donates Gift of a Lifetime

The late Mary Bruemmer (A&S '42, '60), longtime staff member, made a lasting mark at SLU. Her influence endures for those who will benefit from her final gift to SLU: a portion of her estate. Following her planned gift of more than \$50,000, which complements a 2018 gift she made to establish a scholarship for undergraduates, the School of Education will dedicate its heritage wall in her name.

In 1956, Bruemmer started her career at SLU as director of Marguerite Hall and later became the University's first dean of students. Following her "first retirement" from SLU in 1990, she served as a volunteer for another 26 years. She died in 2021.

Iconic Eagle Flies Again

In November 2024, Anheuser-Busch relit its "Flying Eagle" sign facing Interstate 64 near the Saint Louis University campus. Installed in 1962, the 32-foot-high neon sign towers over a building constructed in 1948 for the Missouri Jewelite sign company. In recent years, the building had become a target for vandalism. SLU purchased the property in February 2024 and now displays University messaging on the digital billboard beneath the eagle.



DAVID SOUZA

The "Flying Eagle" sign

SUBMITTED PHOTO



SLU President Dr. Fred P. Pestello (center, with award) was the first American guest of honor at the University of Mumbai's commencement ceremony in January.

SLU Deepens Partnership with University of Mumbai

Saint Louis University is strengthening its partnership with the University of Mumbai, creating opportunities for Indian students to earn advanced degrees while gaining academic and cultural experiences in the United States. The collaboration features a 1+1 pathway program that enables students to complete the first year of their master's degree at the University of Mumbai and the second year at SLU in St. Louis. This fall, chemistry will be added to the available master's program offerings in cybersecurity and analytics. By partnering with the University of Mumbai, SLU has connected with one of the world's largest university systems, which serves more than 700,000 students across hundreds of campuses and affiliated colleges. When the program launched in fall 2024, it marked the first articulation agreement between a public university in India and a U.S. university. The inaugural cohort of 55 students spent their first year in India and will begin their studies at SLU this fall.

Center for Bosnian Studies Moving to SLU

This summer, Saint Louis University will become home to Fontbonne University's renowned Center for Bosnian Studies, ensuring that its work will remain accessible to the St. Louis community and scholars worldwide as Fontbonne closes.

Founded in 2006 as the Bosnia Memory Project, the center is the only initiative of its kind in North America, preserving stories and artifacts of Bosnian genocide survivors and their families. The center focuses on St. Louis' Bosnian community, which numbers more than 60,000, the largest Bosnian population outside of Bosnia and Herzegovina.

The center will bring its oral histories, rare collections, circulating materials and growing digital archives to the Saint Louis University Libraries Archives. As part of the transition, Dr. Adna Karamelic-Oates, the center's director, and Rebecca van Kniest, a professor and librarian who is the center's archivist, will continue their work in similar roles at SLU.





SARAH CONROY

♥ 103,000    💬 314    📌 1,818



**universitas** As he prepares to step down, Dr. Fred P. Pestello reflects on his 11 years as SLU's president.

# Selfie-Reflection — by Laura Geiser

There is no off switch for a university president. It's a 24/7 job. There are meetings all day, every day. There are countless after-hours commitments — including sporting events, ceremonies and student activities. Quiet meals at home are rare. And sleepless nights are part of the job.

But Saint Louis University President Dr. Fred P. Pestello's schedule is about to change.

On June 30, he will step down as SLU's 33rd president and, after a sabbatical, return to the teaching and scholarship that marked his early career.

It is a big shift, but one he knows is coming at the right time. Pestello, SLU's third longest-serving president, will have been in the role for 11 years — nearly doubling the average 5.9-year tenure of a university president.

Those years were filled with highs and lows. Challenges and lessons. A bicentennial celebration and a sobering pandemic.

Pestello, who will turn 73 years old at the end of his term, is ready to move on to his next chapter. But before going, he sat down for one final interview to reflect on the work and institution he holds so dear.

Pestello (front, center) takes a selfie with (from left): (front row) Reueline Arulanandam, Janette McKinney and Tori Harwood; (second row) Christine Rollins, Allie Thornton, Aitor Iribarren Quevedo and Dr. Eleonore Stump; (third row) Justin Nolden, Dr. Hadi Alhorri, Dr. Chris Sebeliski, VonDerrit Myers, Jesse Driese and Grace LoPiccolo; (fourth row) Tina Franklin, Amelia Arnold, Adam Zabel, Kasi Williamson, Brynn Drake, the Billiken and Nicci Roach.



**UTAS:** You were SLU's first lay president. What did that mean for you and for SLU?

**PESTELLO:** Shortly after I became the second lay provost at the University of Dayton, we hired our first lay president. Several years later, I was appointed the first lay president of Le Moyne College. In 2014, I became the first lay president here. So, I've seen that transition up close as provost, and I had already lived it prior to joining SLU.

I, and others I know who have become first lay presidents, take mission promotion very seriously. We realize what is expected of the leader of these sacred organizations.

Where I have been especially blessed in this effort is the overwhelming support I have enjoyed from the members of the sponsoring order of the universities at which I have worked — the Marianists at Dayton and the Jesuits at Le Moyne and SLU. These men stood by me through good times and not-so-good. Their generous investment in my development and success has been critical to my ability to lead at three faith-based organizations. The same holds true for the astute archbishops with whom I have collaborated in Dayton, Syracuse and St. Louis.

**UTAS:** How did you put SLU's Catholic, Jesuit identity front and center?

**PESTELLO:** Right from the start, it is how I thought about and talked about our university. I did so in the search process. I did so when I was announced as president. As those who have heard me speak then or since, I always say that we are a Catholic, Jesuit, international, urban, residential, research university. I intentionally start with Catholic, Jesuit because that is what makes us most distinctive and is most essential to both our identity and decision-making. That is the touchstone, the foundation, the core from which everything flows.

**UTAS:** Your most recent vision statement is "To be a global Jesuit university — one that is mission-focused, student- and patient-centered and research-driven, working with the people of St. Louis to reimagine, transform and unify our city." Why is that your vision?

**PESTELLO:** That vision came from the times in which we are living. It came from becoming acquainted with the region, getting to know the University and having many conversations with the people of SLU and St. Louis about their aspirations and commitments.

I worked with my astoundingly talented and dedicated office team in crafting a few iterations until we arrived at that statement. We shared it selectively among constituent leaders, then broadly. And we heard back that we nailed it. It rings true.

We are mission-driven — the vision starts with that. Our mission requires us to be student- and patient-centered. We are research-driven, and research has been a key priority from my start. And as the oldest continuing organization in the St. Louis region, with St. Louis University High School, we have been a part of the fabric of everything that has happened here for the last 207 years. In many ways, people look at us as "St. Louis" University. People in this community think highly of us and have high expectations for us. They count on us to be a catalyst that helps reimagine, transform and unify our city.

STEVE DOLAN



STEVE DOLAN



**UTAS:** Do you feel like we're on the path to achieving that vision?

**PESTELLO:** Yes, I very much do, particularly during the last few years. The strides we have made in becoming global and international are extraordinary. We have so many more international students here — literally thousands more than we did a few years ago. The Madrid campus has grown substantially, and I suspect that will continue to accelerate because of the quality and commitment of the faculty and staff there in the culturally rich capital of Spain. We are currently in conversation with several international universities about partnerships and joint programs.

We are absolutely mission-focused. One of the things that is very clear in surveys of our faculty and staff is that they understand, are committed to and highly value our mission. We always turn to our mission and Gospel values when faced with critical decisions.



**CLOCKWISE FROM LEFT:** Pestello and his spouse, Dr. Fran Pestello, walking down the aisle of St. Francis Xavier College Church following the inauguration Mass on Oct. 2, 2014; the Pestellos and their children, Freddie and Vitina, after the inauguration Mass; posing for a selfie with Oriflamme leaders during Fall Welcome in 2023; receiving the chain of office from Bill Kauffman (right), who had served as interim SLU president during the 2013-14 school year, during the inauguration ceremony at Chaifetz Arena on Oct. 3, 2014.



STEVE DOLAN

If you talk to our students and our patients, you will find that they feel that they are put at the center. Our students speak authentically and compellingly about what the faculty and staff mean to them, do for them and how engaged they are in their development. The same is true for our patients. Our physicians and health care professionals treat them as unique, whole persons and are very much concerned with them in the spirit of *cura personalis*.

And we are research-driven. We have excellent scholars across the University, and I am delighted that thanks to their hard work, SLU achieved R1 status.

**UTAS:** That leads to my next question. In your first *Universitas* interview in 2014, you said, "One achievement that would please me is if SLU were to widely and universally be thought of, both nationally and internationally, as unquestionably one of the nation's very top Catholic research universities." And now, as we know, SLU is an R1 institution. Why was research a priority 11 years ago? And for alumni who aren't familiar with R1, why is that distinction so important?

**PESTELLO:** When I came, I saw the caliber and ambition of the faculty, and I thought, "This is a research university that just needs the right investments and the right structures of support to become R1." We have worked to provide that infrastructure, and the faculty has delivered. We were able to achieve R1 sooner than we initially imagined. And I must mention it is also thanks in no small part to the generosity of our donors, particularly Dr. Jeanne and Rex Sinquefeld (CSB '67).

I also found our loyal alumni and devoted trustees are invested in SLU. They are very ambitious for us. If you look at the most prestigious doctoral institutions across the country, they are all R1. This level of research volume allows you to attract stronger faculty. It allows you to attract more funding. It allows you to engage more students in cutting-edge research. The bigger the infrastructure, the more research you can support, and it will continue to grow. I look forward to watching SLU accelerate its excellence in research and scholarship.

**UTAS:** Years from now, when people look back on the Pestello presidency, what do you hope they'll remember?

**PESTELLO:** That together, all of us, strengthened and elevated SLU's reputation locally and nationally. When you consider how we managed our most difficult challenges and took advantage of our greatest opportunities, you will see that our successes were a result of coming together as OnesLU — a term we coined during the COVID-19 pandemic — guided by our values, supporting each other and keeping our focus on where we aspired to be.

SARAH CONROY





**UTAS:** You've certainly had an impact on the physical campus, including two new residence halls and the Sinquefeld Science and Engineering Center, but you've also had an impact on SLU's neighborhood.

**PESTELLO:** When I first arrived, I was particularly concerned that many areas around campus, particularly the area between the north and south campuses, were blighted. That's where we focused. Perhaps most significantly, we established the Midtown Redevelopment Corporation with SSM Health. And the Midtown area has been entirely transformed at a pace many thought impossible.

Look at the multifaceted City Foundry STL project with local food vendors, brick-and-mortar shops run by local business owners and a Fresh Thyme market that features goods from local companies. We have given local entrepreneurs another destination in which to thrive and grow.

Look at the area between Grand and Compton on Chouteau with the Topgolf, Steelcote Lofts and Target — it's been transformed. And we know there is more to come. We expect Target will attract other retail and commercial businesses.

And to the west on Chouteau, we have the gleaming new SSM Health Saint Louis University Hospital, and a new SSM Health Cardinal Glennon Children's Hospital rising out of the ground.

**UTAS:** If you could go back to when you were appointed president in 2014 and give yourself some advice, what would you tell yourself?

**PESTELLO:** There was a lot of disruption and change in my first few years; it was intense and stressful.

At first, you are an unknown, and others, both inside and outside of the organization, are unknown to you. You lack networks and deep relationships upon which you can rely for objective assessments and guidance. And in the midst of it all, you don't know how it's going to turn out. You live with that great uncertainty. In the end, I believe that it worked out well. We successfully managed through some incredible challenges and obstacles — when many had predicted failure.

So, I would go back to 2014 and 2015 and tell myself, "You will be all right. It's going to be all right."

**UTAS:** Are there any accomplishments that you look back on with pride?

**PESTELLO:** Certainly. I'm proud of many things we have achieved. Partnering with SSM Health and transferring control of SLUCare were historic changes that were beneficial for all. This year, we have the largest enrollment in SLU's history. I am thrilled with the development we have stimulated in the Midtown area. I am thankful for the great success of the Accelerating Excellence fundraising campaign and that our generous donors continue to support us at record levels. I take pride in the ground-breaking scholarship we produce, the excellent education we provide and the extensive community-based services we deliver in this region, in Madrid and beyond.



SARAH CONROY



STEVE DOLAN



SARAH CONROY



**CLOCKWISE FROM ABOVE:** Pestello addressing a crowd of 6,000 following the Bicentennial Mass held under the Gateway Arch on Sept. 23, 2017; presenting a diploma to actor Jon Hamm (center) at the 2024 commencement ceremony with Joe Conran (left), former chairman of the SLU board of trustees; addressing the new freshman class at the 2022 convocation ceremony at Chaifetz Arena; signing the last beam to be put into place during construction of the O'Loughlin Family Champions Center in 2023.



SARAH CONROY

I am proud of the leadership team we have created and the trust and transparency we built across the organization. We have increased information-sharing and improved communication. Our operational plans are stronger and smarter. We execute those plans more seamlessly.

We collaborate more effectively. There is more inclusive decision-making. And while there is so much yet to do and ways to improve, I am proud of how far we have come on this journey — together.

**UTAS:** What is your favorite memory as president?

**PESTELLO:** There are so many. But I really do love the ceremonies. My favorite is our new student convocation each August. It is the ceremony I love the most — welcoming our new students as Billikens and their families. Describing this institution and the opportunities it offers for them is a joyous moment for me. It's also a moment where I can reassure parents that they have made the right choice. And here at SLU, their children have an environment in which they can achieve, grow and thrive. I also have great memories of our stellar bicentennial celebrations — the Mass at the Gateway Arch, the symphony concert, the gala kicking off our fundraising campaign — all are powerful memories. Being able to be president at that historic moment in the University's long history was moving.

**UTAS:** What were the best decisions you made as president?

**PESTELLO:** That is for history to judge.

**UTAS:** As president, you've weathered some storms, particularly the clock tower occupation in 2014 and the COVID-19 pandemic. How did those affect you and SLU?

**PESTELLO:** Each time one moves through a crisis, one learns and grows from it — and the organization becomes stronger and more resilient.

I was president for barely a month when Michael Brown was killed, and this city — my new home — erupted. Two months later, after more than 1,500 students and non-students rallied on our campus, the occupation near our clock tower began.



Throughout those six October days, I learned a great deal about this University and its people. It reinforced my long-standing belief that no one accomplishes anything of significance alone. The higher you are in the organizational chart, the more reliant you are on others.

To succeed as a leader, you need a team of talented people you trust, who also trust you, and with whom you lock arms and undertake the work of the organization. This begins with the President's Office staff and radiates out from there. Those with whom I work are selfless, talented and all-in on SLU.

COVID-19 was a nightmare for everyone — starting with the stay-at-home order and the swift loss of life, and the heightened awareness of those most vulnerable to the virus. The impact on our families, both socially and psychologically, was just devastating.

We learned that we could pivot very quickly to remote instruction and work. We deftly managed a move-out from our residence halls while creating safe housing for those students who remained on campus — as well as providing safe housing for our frontline health care workers who could not risk unwittingly transmitting the virus to vulnerable loved ones.

We were not quite as effective overall in educating and forming students remotely, but we did our best. I would have never imagined that we could quickly flip to a virtual organization. But we did.

COVID showed how we could come together to protect our families, the University community and city residents from a virus about which we had more questions than answers. We heard very early on that our students wanted to be back on campus. They missed their roommates, classmates and friends. They longed for the generous out-of-class support from our faculty and staff they'd come to expect. And we heard from our faculty and staff that they preferred to work in person with our students.

We were able to come back to campus in August 2020 when many other institutions didn't, and we never shut down. Impressively, we maintained lower rates of positivity than the surrounding area throughout, thanks to the hard work of many people and our students' compliance with the rules we set to protect members of our community.

The day we opened our first vaccination clinic in Simon Rec, there were tears of joy. We thought, "We can beat this."

**UTAS:** St. Louis has become your home over the last 11 years, and you plan to stay here. Why?

**PESTELLO:** My spouse, Fran, my children, Vitina and Freddie, and I very quickly fell in love with St. Louis. Fran and I appreciate a number of things about the city. We love the different neighborhoods and their defining characteristics. It's architecturally interesting.

We love Forest Park and the culinary scene. The quality and variety of the arts here is extraordinary — including in Grand Center, an easy walk from North Campus. St. Louis has nearly everything that one would desire or expect in a top metropolitan area. Yet it lacks the congestion and sky-high cost of living of the nation's very largest cities.

**UTAS:** Your spouse, Dr. Fran Pestello, was SLU's first first lady. How has she been a support to you and an asset to SLU?

**PESTELLO:** The best decision I ever made was proposing to my spouse. I absolutely could not have my career without her. She made a major sacrifice when we came to SLU because she decided that she would give up life as a full-time tenured faculty member and devote considerable time to supporting my role, the University and the community.



BENJAMIN LOWENAU

Although she has taught as a SLU adjunct professor — and loves it — and has participated in many initiatives here, including the St. Louis Literary Award, Fran has devoted a tremendous amount of time to directly supporting me and extending my presence and influence. She welcomes. She bonds. She mentors. Students, staff, faculty, trustees and donors all respond so warmly to Fran. It's wonderful to witness.

Fran's commitment to complement and work in tandem with me has made it easier for me to be as effective as I have been, to whatever extent that is. I simply could not have done it without her making those sacrifices.

And I should add that our wonderful children and their partners have made sacrifices for my career, as well as being an enormous comfort and support.

**UTAS:** What's next for you?

**PESTELLO:** I will take a sabbatical and then join the faculty. Teaching has always been a joy. I love our students. My office knows that if I get cranky, they will encourage me to go out to be with some students because it inevitably puts me in a good mood. A few selfies, and I am good as new.

Throughout my many years as an administrator I have always thought of myself as an academic at heart.



**CLOCKWISE FROM LEFT:** Pestello addressing graduates via a screen at a socially distanced precommencement ceremony in May 2021 at Chaifetz Arena; joining students in a goat yoga session in spring 2023; passing out cookies to students during final exams in December 2021; posing with his spouse, Dr. Fran Pestello, near the Dolphin Pond during Fall Welcome in 2022.



SARAH CONROY



SARAH CONROY

I believe that has helped me be a better president. I now want to go back to the joy of devoting extended periods of time to diving deep into lines of inquiry. That level of intellectual commitment has not been possible for me in this role. I miss the joy of the intellectual journey, and I'm looking forward to returning to it. And just spending more time with the books that line my shelves here and at home, too many yet to be read. I also look forward to reading more broadly than time currently allows.

**UTAS:** What advice would you give to SLU's incoming president, Dr. Edward Feser?

**PESTELLO:** Dr. Feser realizes that he's joining a wonderful, mission-focused university. That is what attracted him. He is well-equipped to lead SLU to higher levels of excellence.

I would advise him to continue to follow his heart and be guided by our mission.

**UTAS:** Do you have a message for alumni?

**PESTELLO:** I would like to thank them for their embrace of me, Fran and our family. Their support and encouragement have been critical to me, particularly during those times that have been the most challenging.

I know that SLU alums have deep affection for this institution. I have seen and felt it. It's front and center when I meet with alumni.

They have enormous pride in this University. I appreciate them for being the wonderful Billikens they are and for all the good work that they do in the communities in which they live, work and serve. They both motivate us and make us proud.

**UTAS:** Do you have any final thoughts?

**PESTELLO:** I feel extremely fortunate to have had such a meaningful and fulfilling career. It has been a privilege to serve as president at SLU — to work in this global Jesuit university with its noble mission and values — which does so much to advance knowledge and understanding, form young men and women of character, compassionately treat patients, improve our communities and work around the clock for a more just world.

I was blessed to work with smart, caring, devoted colleagues and with young, energetic, idealistic students who are eager to learn, so that they can ultimately venture from SLU and, as St. Ignatius encouraged, set the world on fire. ☘



SARAH CONROY



# REACHING RESEARCH



To those outside of academia, “R1” may be an unfamiliar term. But even those who have never heard of R1 should know that it puts Saint Louis University in a whole new league.

SLU earned the highly revered R1 designation in the 2025 Research Activity Designations published in February by the American Council on Education and the Carnegie Foundation for the Advancement of Teaching.

R1 designation is the highest classification that universities can attain for research activity. With this distinction, SLU joins an elite group of fewer than 190 universities nationwide, affirming its place among pre-eminent research universities in the United States.

“Achieving R1 status is a historic milestone for Saint Louis University — a testament to the remarkable dedication of our faculty, students and staff who live our Jesuit mission every day,” SLU President Dr. Fred P. Pestello said. “This distinction will expand our capacity to pursue truth through life-changing research that serves a higher purpose for the greater good.”

To qualify for R1 classification, universities must spend at least \$50 million on research and award a minimum of 70 research doctorates in any field within a single year. SLU has far surpassed these thresholds, reporting \$85.9 million in research expenditures and awarding 271 research doctorates in 2023, the most recent year for the Carnegie classification.

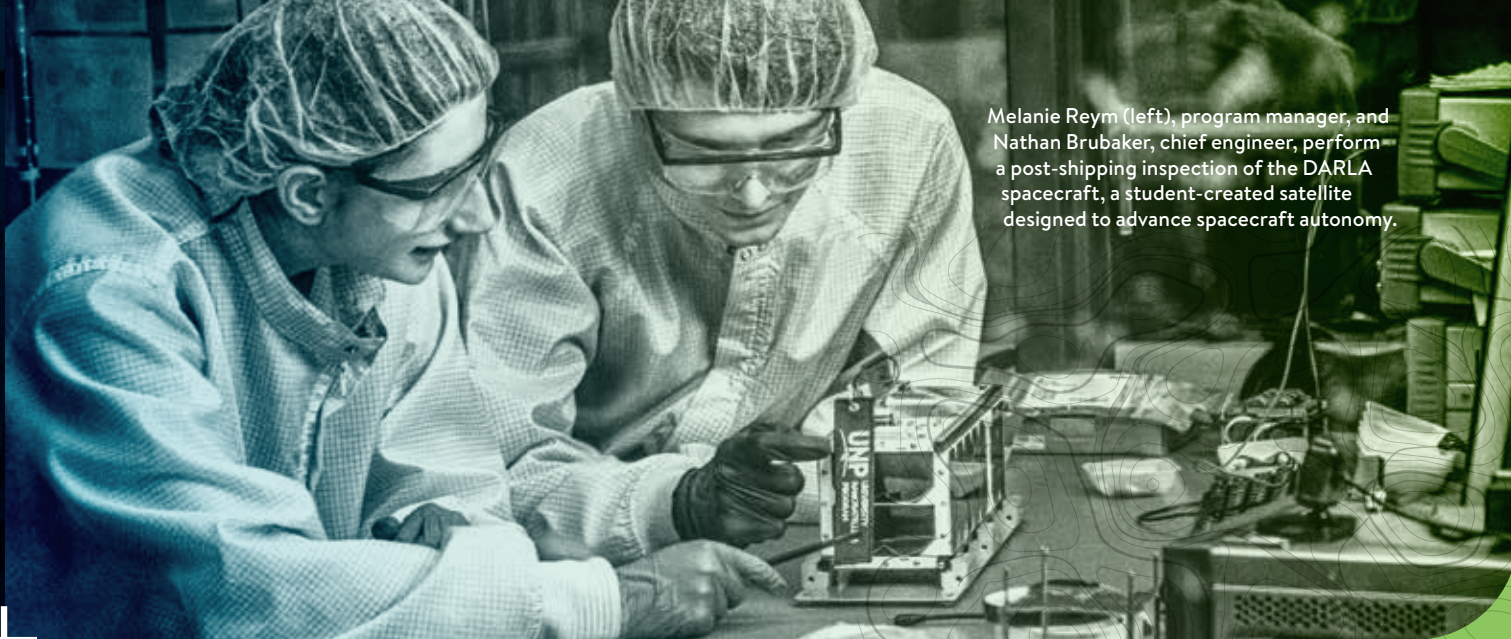
SLU’s rise to R1 is the result of a decade-long, institution-wide effort to become a national exemplar for educational and research excellence. Since 2014, the University has focused on creating a robust research environment that fosters collaboration across disciplines and offers new opportunities for faculty and students to explore today’s most urgent challenges.

Saint Louis University has achieved the prestigious R1 status, joining an elite group of U.S. research universities.

— BY CLAYTON BERRY







Melanie Reym (left), program manager, and Nathan Brubaker, chief engineer, perform a post-shipping inspection of the DARLA spacecraft, a student-created satellite designed to advance spacecraft autonomy.

SARAH CONROY

SLU RESEARCH INSTITUTE

The SLU Research Institute was established in the fall of 2018 following the largest philanthropic gift in Saint Louis University history: \$50 million from Dr. Jeanne and Rex Sinquefield (CSB '67) in 2018. (See sidebars.)

The institute has been a catalyst for research growth at the University, supporting the launch of numerous other centers and institutes, including:

- Sinquefield Center for Applied Economic Research, which was established to advance rigorous research and inform public policy. The center studies a range of topics — taxation, education, health, regulation, entrepreneurship and technology policy — and develops databases related to Missouri and St. Louis, to create economic opportunities for residents across the region.
- Water Access, Technology, Environment and Resources (WATER) Institute supports research that protects aquatic ecosystems, secures water resources and improves access to clean water for communities in the St. Louis region and around the world.
- Advanced HEALth Data (AHEAD) Institute conducts data-driven research to improve patient and population health, advance health care quality and decrease health care costs. The institute houses several large databases and assists SLU researchers in identifying, obtaining and maintaining data to meet their research needs.
- Institute for Drug and Biotherapeutic Innovation is a multidisciplinary association of SLU researchers with a shared interest in drug and biotherapeutic discovery and development to address unmet patient needs.
- Institute for Translational Neuroscience includes more than 100 members from 23 departments across the University. These researchers work to advance understanding of the nervous system and improve patients' quality of life, exploring everything from chronic pain to cognitive decline.

The University's rise to R1 status has been accelerated by the generosity of donors who have invested significantly in SLU's mission to advance knowledge that transforms lives, including a \$50 million gift from Dr. Jeanne and Rex Sinquefield (CSB '67) in 2018. (See sidebars.)

"Our ascendance to national research prominence has been nothing short of amazing," SLU Provost Dr. Michael Lewis said. "The immense generosity of our donors has allowed us to invest boldly in our research enterprise — recruiting top scholars, expanding interdisciplinary collaboration and building the infrastructure needed to accelerate discovery at SLU."

University leaders believe achieving R1 status is not just a milestone for SLU; it's a major win for the entire St. Louis region. As an anchor institution for more than 200 years, the University's rise to R1 status is expected to fuel innovations that address regional challenges and create new opportunities for economic growth and workforce development in St. Louis and Missouri.

"As the first university west of the Mississippi River, SLU has long been a place where bold ideas take root and flourish," Pestello said. "Becoming an R1 university enhances our ability to attract leading researchers and scholars who will fuel innovations that drive the growth and success of our region, benefiting all of our neighbors and creating opportunities for everyone to thrive."

SLU researchers are developing new treatments for chronic ailments, advancing vaccines for infectious diseases and pioneering better approaches for pain management. They're also enhancing care for aging populations, creating communication tools for the DeafBlind community, studying the safety of Missouri's bridges and using geospatial science to address food security and other critical issues.

The University's prestigious research distinction reflects not only its commitment to groundbreaking discovery but also its ongoing commitment to excellence in teaching, carrying forward the Jesuits' rich tradition of intellectual rigor and scientific inquiry, which has shaped fields ranging from astronomy to mathematics to seismology.

Saint Louis University is one of
two
five
seven
R1 UNIVERSITIES IN ST. LOUIS
R1 UNIVERSITIES IN THE STATE OF MISSOURI
CATHOLIC R1 UNIVERSITIES

"For a Jesuit university, research and teaching are not separate pursuits; they are deeply intertwined," Lewis said. "As we elevate our research profile, we'll continue to ensure that SLU prepares students to not only become experts in their fields but also compassionate, discerning leaders who will use their knowledge to make a meaningful difference in the world."

Developed in 1973 by the Carnegie Commission on Higher Education — and currently managed by the Carnegie Foundation for the Advancement of Teaching in partnership with the American Council on Education — the Carnegie Classification is considered the leading framework for categorizing U.S. higher education institutions.

For Carnegie's classification, research expenditures are reported through the National Science Foundation's Higher Education Research and Development (HERD) Survey for the years 2021, 2022 and 2023, reflecting the total spending for those years. Research doctorates are reported through the IPEDS Completions Survey, using data from the same three-year period.

SLU CELEBRATES SINQUEFIELDS AND RESEARCH AT BUILDING DEDICATION CEREMONY

Saint Louis University's hub for science and innovation has a new name — the Sinquefield Science and Engineering Center.

Celebrating the generosity and dedication of donors Dr. Jeanne and Rex Sinquefield (CSB '67), the former Interdisciplinary Science and Engineering Building was renamed during a dedication ceremony in March.

The 90,000-square-foot, three-story structure, which opened in 2020, houses teaching-lab spaces, research spaces, classrooms, collaboration spaces and more.

In 2018, the Sinquefields donated a record \$50 million to SLU. The historic gift was intended to grow the scale and eminence of SLU's research and scholarship.

Dr. Ellen Barnidge (Grad PH '05, '08), SLU's interim vice president for research, said researchers who were recruited and retained with the Sinquefields' gift have contributed \$30 million in external research funding and have published 20 books in just three years.

"The building was designed to attract people with its natural light and collaboration spaces. However, the Sinquefield Science and Engineering Center goes beyond the physical space by attracting researchers and students who desire to test hypotheses, advance technologies and achieve scientific discovery," Barnidge said. "A center like this one attracts people who strive for excellence."

Jeanne Sinquefield said the key to the gift's success was trusting that researchers would have the best ideas for worthwhile initiatives. Rather than decide themselves, the Sinquefields put that question to SLU's faculty.

This approach led to SLU's Big Idea program, which helped launch initiatives like SLU/YouGov Poll and the WATER Institute.

Rex Sinquefield, a member of the University's board of trustees, praised SLU for the work it has done since the donation and said he was excited about what comes next.

"I look forward to seeing what great research is produced here," he said.



STEVE DOLAN



# MOMENTS AND MILE- STONES

Dr. Fred Pestello has led  
Saint Louis University  
through more than a decade  
of unprecedented events.

– by Amy Garland



**W**hen Dr. Fred P. Pestello came to Saint Louis University in the summer of 2014, he had big ideas for his presidency. Grounding his vision for the future of the University in its storied, pioneering past, Pestello embarked on a plan to propel SLU into its third century. What happened next, no one could have anticipated.

One unprecedented event after another, both trying and triumphant. An occupation on campus. A worldwide pandemic forcing students off campus. Record-breaking enrollment. A capital campaign besting its highest goals.

If ever there had been a time for strong leadership at the University, the past decade was it. And although he certainly stepped up, Pestello credits the community for coming through for SLU.

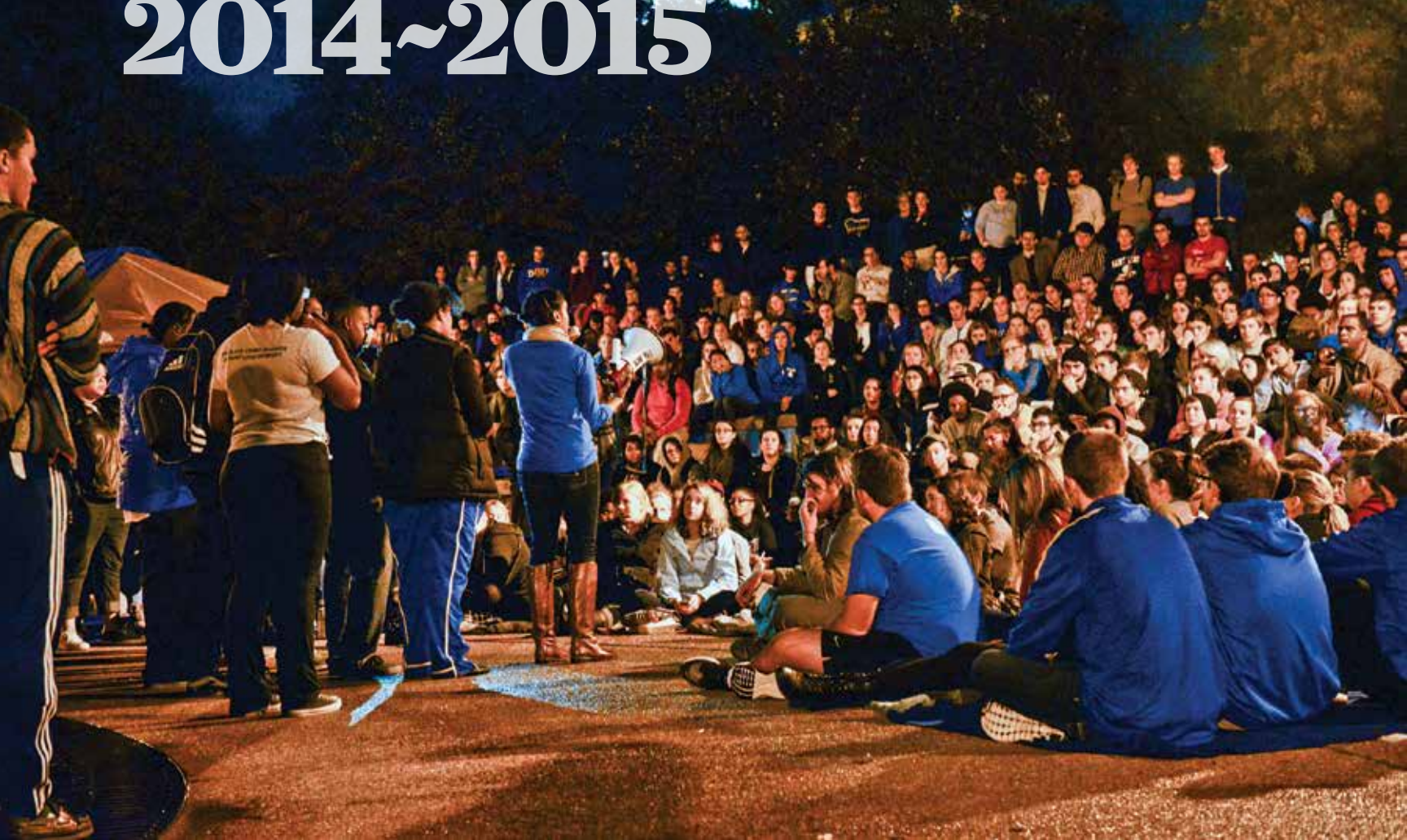
“The president’s job is to set the vision, given what the institution stands for, and then encourage people, inspire them and support them to realize that vision,” Pestello said. “Look at what happens in any given year at Saint Louis University — thousands of people are involved.”

“As I reflect upon the past decade, I am amazed at all we have endured and achieved together,” he said. “We faced moments that tested us and revealed what defines this Jesuit university community.”

Here is a look back at those defining moments, milestones and most memorable campus events from Pestello’s tenure.

PHOTO BY  
SARAH CONROY





FILE PHOTO

## FIRST 100 DAYS

Pestello took office on July 1, 2014, as Saint Louis University's 33rd president and the first permanent lay leader in University history. Three months later, on Oct. 3, the University community came together to celebrate his inauguration with a Mass and celebration.

## STRATEGIC START

Pestello dedicated his first academic year at SLU to developing a strategic plan to "chart our future course and take us to even greater heights for our bicentennial and beyond." The plan, *Magis: Saint Louis University's Strategy for the Future*, emerged from an inclusive process that included more than 100 on- and-off campus conversations. The new strategic plan was approved by SLU's board of trustees in September 2015.

## LEADING WITH PEACE

Nine days after Pestello's inauguration, more than 1,500 SLU students and area residents gathered on campus, protesting police brutality following the deaths of Michael Brown in Ferguson, Missouri, and VonDerrit Myers Jr., the son of a longtime SLU employee, in the Shaw neighborhood near campus.

Despite intense pressures from inside and outside the University to forcibly evict the student and non-student protesters, Pestello decided "to meet peace with peace." What followed became known as Occupy SLU, a six-day encampment that tested the new president and the University's long-standing resolve to be a mission-driven organization.

The occupation ended peacefully on Oct. 18 with the Clock Tower Accords, which committed the University to 13 initiatives to foster belonging and justice on campus and beyond. Among those who publicly praised Pestello's handling of the occupation were the 27 religious leaders of the Interfaith Partnership of Greater St. Louis; St. Louis Archbishop Robert Carlson; Ronald Mercier, S.J., provincial of the Central and Southern Province; and Eric Holder, attorney general of the United States. Editorials by the *St. Louis Post-Dispatch*, *St. Louis American* and *St. Louis Business Journal* heralded the new president for his stalwart commitment to living the University's values.

A year later, the University enrolled its second-largest full-time, first-year class, increased its first-to-second-year student retentions, and had its second-best fundraising year ever. Pestello's Jesuit values-based response to the campus occupation was identified as a key driver.

An evening teach-in at the clock tower amphitheater during Occupy SLU in 2014

## NEW HOSPITAL PLANS

Over the summer, Pestello announced that the University would reacquire Saint Louis University Hospital from Tenet Healthcare Corporation and would contribute the facility to SSM Health, in exchange for a minority financial interest and governance rights in SSM Health St. Louis.

The deal became official in September 2015. SSM committed to invest \$500 million (which increased later to \$550 million) to build a new hospital and ambulatory care center across the street from the School of Medicine, improving both patient care and medical student training.

This marked the start of an expanded partnership between SLU and SSM, with SSM Health Saint Louis University Hospital officially joining SSM Health's extensive Catholic health care network.

## INCARCERATED, EDUCATED

In November 2015, Pestello delivered a commencement address to the first graduates of the SLU Prison Program, who earned Associate of Arts degrees while incarcerated at the Eastern Reception, Diagnostic and Correctional Center in Bonne Terre, Missouri. The program began in 2008, when SLU faculty started teaching theological studies classes at the facility.



## NEW LOGOS

Two of the most enduring symbols of Saint Louis University — the fleur-de-lis and the Billiken — got new looks for the digital age. SLU shared the updated logos in November 2015.



© HASTINGS-CHIVETTA ARCHITECTS, INC. / FENITRESS PHOTOGRAPHY

## SPRING HALL

After nearly two years of planning and construction, the \$43.8 million Spring Hall welcomed students on Aug. 17, 2016. The eight-story residence hall sits at the northwest corner of Laclede and Spring avenues, the former location of Clark's Bar and

The Grind coffeehouse. The new building adheres to LEED silver standards, offering a comfortable, environmentally friendly space.

## GOOD NEIGHBOR

Saint Louis University shared an ambitious vision for nearly 400 acres in Midtown, as it sought greater influence over future development in the long-blighted area between North and South campuses. By establishing the Midtown Redevelopment Corporation in partnership with SSM Health, the University became the area's master co-developer, working to foster and control investment in the area, and connect campus like never before.

In less than 10 years, the Midtown Redevelopment Corporation would spur development of two new major hospital facilities, residential buildings, retail and office spaces, recreation outlets, a food hall, movie theater, Topgolf, a hotel and a Target store.

All of this construction succeeded in building density, vibrancy and convenience as well as ensuring the adaptive reuse of several abandoned and dilapidated structures.



Smith (left)

## DEDICATED TO DIVERSITY

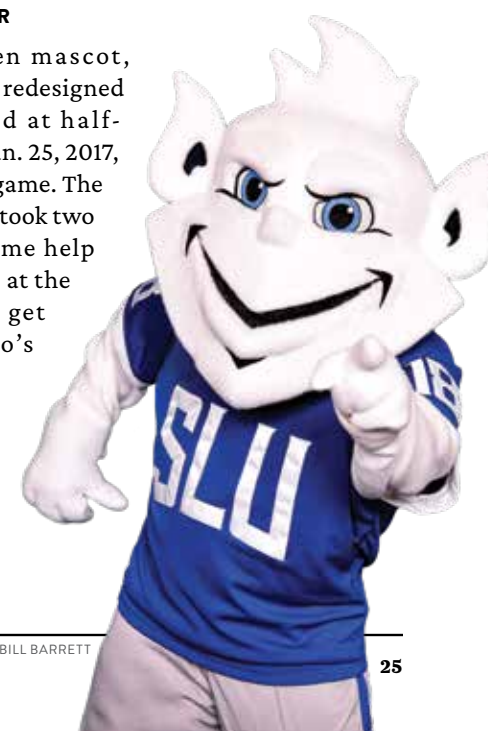
Dr. Jonathan C. Smith became the University's first special assistant to the president for diversity and community engagement. Smith, whom Pestello called "an innovative problem-solver and motivating leader," had been an assistant professor at SLU since 2002. Later named a vice president, Smith remained a key advisor to Pestello and a champion of inclusion and belonging until his death in June 2021.

## CHESS TO IMPRESS

The University established its first collegiate chess program in partnership with the Chess Club and Scholastic Center of Saint Louis in 2016. SLU's chess team, which offers competitive scholarships and recruits top-tier players from around the world, became national champions in 2022.

## MASCOT MAKEOVER

The new Billiken mascot, based on the logo redesigned in 2015, debuted at half-time during the Jan. 25, 2017, men's basketball game. The mascot makeover took two attempts and some help from the animals at the St. Louis Zoo to get it right; Pestello's tongue-in-cheek video in fall 2016 garnered widespread kudos on campus and in the local media.



BILL BARRETT



# 2017~2018

## GOOD FOR BUSINESS

SLU trustee Dr. Richard A. Chaifetz (A&S '75) and his wife, Jill Chaifetz, pledged \$15 million to the business school in February 2018. To honor their generosity, the University renamed the school the Richard A. Chaifetz School of Business and the school's entrepreneurship center the Chaifetz Center for Entrepreneurship. In 2007, the couple had provided the lead gift of \$12 million toward construction of Chaifetz Arena.

## SLU-MADRID TURNS 50

In March 2018, Saint Louis University's Madrid Campus recognized 50 years of educating "global Billikens" and marked SLU's 200th anniversary during a day of events that included Mass at the flagship church of the Society of Jesus in Spain; an honorary degree conferral ceremony; and a banquet on campus. SLU-Madrid continues to grow at a rapid pace, well exceeding enrollment projections.

## GRAND HALL

At the corner of Grand Boulevard and Laclede Avenue, the new Grand Hall opened in August 2017. The \$71 million residence hall houses more than 500 students on six floors and includes a large dining hall serving the entire first-year class and more.

© HASTINGS+CHIVETTA ARCHITECTS, INC. / FENTRESS PHOTOGRAPHY



STEVE DOLAN

Attendees at the bicentennial Mass on the Arch steps

## BICENTENNIAL BEGINS

On Sept. 23, 2017, the University kicked off its bicentennial where it all began — on the banks of the Mississippi River. About 6,000 people celebrated SLU with Mass, fireworks and fun near the site of its first classes in 1818, on what became the Gateway Arch grounds. Other bicentennial highlights included a lecture series and the April 2018 Climate Summit, which was inspired by Pope Francis' 2015 encyclical *Laudato Si'* and brought thousands of people to campus.

## ACCELERATING EXCELLENCE CAMPAIGN

The most ambitious fundraising effort in SLU history, the Accelerating Excellence campaign launched its public phase in fall 2018. By that point, the University had raised \$302 million toward the campaign's \$500 million goal in support of five priorities: academic excellence; scholarships; business education; health sciences education and research; and athletics. When the University closed the campaign books in summer 2022, the goal had been surpassed by more than \$100 million, a total of \$604 million raised.

## HISTORIC GIFT

SLU trustee Rex Sinquefield (CSB '67) and his wife, Dr. Jeanne Sinquefield, committed \$50 million to SLU — the largest gift in University history. The donation funded the new Saint Louis University Research Institute, established the Sinquefield Center for Applied Economic Research and provided annual support to SLU's chess team.

## 200-YEARS-IN-ONE CHALLENGE

For its bicentennial, the University invited the entire community to volunteer, hoping to complete 200 years — more than 1.75 million hours — in just one year. The challenge ended Nov. 14, 2018, exceeding expectations: a total of 1,975,447 hours collected. (That's 225 years, 6 months, 5 days and 7 hours — and 223,447 hours above the original goal.)

# 18~19



JUSTIN BARR

The clock tallying volunteer hours at the corner of Grand and Lindell boulevards

# 2019~2020

## LARGEST, MOST DIVERSE CLASS

In August 2019, the largest freshman class in SLU history arrived on campus — more than 1,900 students, a 25% increase over the previous year. The Class of 2023 was one of the most diverse, too: 14% of the class was historically underrepresented students, and 204 students were the first in their families to attend college.

## NURSING'S NEW NAME

SLU trustee Trudy Busch Valentine (VSN '80) gifted \$4 million to the School of Nursing and the Accelerating Excellence campaign. To recognize her continued philanthropic support of SLU, totaling nearly \$7 million, the University renamed its nursing school the Trudy Busch Valentine School of Nursing.

## COMMUNITY IN DISPERSION

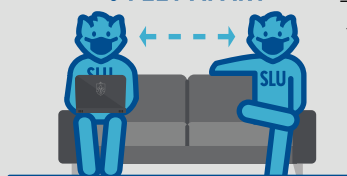
The University had been monitoring the threat of COVID-19 since January 2020. On March 10, 2020, SLU announced that it would suspend in-person classes temporarily, extending spring break for a second week. By March 13, a state of emergency had been declared. Campus cleared out safely and calmly, and students, faculty and non-essential staff ended up working remotely for months.

In July, SLU's National Institutes of Health-funded Vaccine and Treatment Evaluation Unit became one of the first sites in the country to begin phase 3 trials of the Moderna COVID-19 vaccine.

"When historians inquire how SLU responded to this pandemic,

I hope that they will discover what I have witnessed in all of us — a community that, when faced with endless opportunities to turn inward and allow fear to consume us, chose a different path," Pestello said. "We chose the path of kinship, generosity and service. Upon hearing about the boundless uncertainty, suffering and moments of joy, they will see that we chose the path of responding with a resounding, 'we feel that too.'"

STAY SAFE  
6 FEET APART



DOUGLAS GARFIELD

Students social distancing on campus during the COVID-19 pandemic

# 2020~2021

## ONESLU

Early in the COVID-19 crisis, Saint Louis University leadership decided to engage SLU's medical, public health and disaster preparedness experts to lead the University's response as a team. During the 2020-2021 academic year, the University's response included asymptomatic testing, contact tracing, isolation and quarantine housing, and the eventual administering of thousands of doses of COVID-19 vaccines on campus and in select locations in underserved communities. Pestello named these efforts OneSLU, a phrase that was embraced swiftly across all SLU campuses as a shared commitment to care for the entire Saint Louis University community.

The University successfully wrapped up the academic year with mostly in-person classes, entirely in-person labs and 3,500 students living on campus.



JUSTIN BARR

## INTERDISCIPLINARY SCIENCE AND ENGINEERING BUILDING

SLU dedicated the \$50 million Interdisciplinary Science and Engineering Building during a virtual ceremony in September. The 90,000-square-foot, three-story structure opened in July. It was renamed the Sinquefield Science and Engineering Center in March 2025.

The building features innovative teaching lab spaces for bioinformatics, biology, biomedical engineering, chemistry, neuroscience and computer science courses that support all science, engineering, nursing and health science majors.



SARAH CONROY

## NEW SLU HOSPITAL FACILITIES

The new SSM Health Saint Louis University Hospital facilities opened Sept. 1, 2020. The \$550 million hospital features 316 private patient rooms, an expanded Level I trauma center and emergency department, larger intensive care units, green space and areas for future expansion. Next to the new hospital, the state-of-the-art Center for Specialized Medicine is an outpatient hub for SLUCare, an academic medical practice.



## SOCCER CENTER

Robert R. Hermann Stadium, home to men's and women's soccer, was upgraded with a new athletic training center, the Billiken Soccer Legacy Center, which opened in spring 2022. The 5,000-square-foot facility houses two locker rooms, a state-of-the-art sports medicine facility and a conference room overlooking the pitch.



The men's locker room in the Billiken Soccer Legacy Center

SARAH CONROY

## HISTORIC ENROLLMENT

SLU enrolled more students than ever before, thanks to an unprecedented surge in international enrollment: Total enrollment eclipsed 15,200 students for the first time in history.

Contributing significantly to this record was SLU's Global Graduate initiative, which launched in 2020 to attract international students to graduate programs in technology, business and engineering.

In the 2023-2024 academic year, the number of international students (3,183) more than doubled from the previous year. Also, SLU's campus in Madrid, Spain, broke admissions records for the second year in a row.

## STRONG ENDOWMENT

The value of Saint Louis University's endowment grew to \$1.8 billion, an 88.3% increase over the last decade.

## CHAMPIONS CENTER

The O'Loughlin Family Champions Center opened adjacent to Chaifetz Arena in October 2023. Developed with a founding gift from trustee Robert O'Loughlin's family foundation, the \$20 million facility provides extensive support services for Billiken student-athletes, including academic advising, spiritual development, sports performance, nutrition, wellness, sports psychology and more.



SARAH CONROY

## GEOSPATIAL LEADERS

Launched in April 2022, the Taylor Geospatial Institute (TGI) is a consortium of eight research institutions, initially led by Saint Louis University, that share expertise and critical research facilities to advance geospatial science. Established through a legacy gift from the Taylor family, TGI has strengthened St. Louis' role as the nation's leader in geospatial research, training and innovation.

After nearly three successful years working under the SLU umbrella, TGI is now a standalone nonprofit organization.



The crowd at the TGI launch

SARAH CONROY

## MIDTOWN FARE

Two major projects in the 400-acre redevelopment area, guided by SLU through the St. Louis Midtown Redevelopment Corp., were opened during the fall semester: the Food Hall at City Foundry STL and a new grocery store, Fresh Thyme. Together, these new establishments feature numerous options for fresh, local food just a block from campus.



Students leaving Fresh Thyme Market

KELLY PALADIN



Jesuit Center steeple

SARAH CONROY

## JESUITS AT THE CENTER

The Jesuits missioned as professors, pastors and staff members at Saint Louis University moved into their new home in August 2022. The Jesuit Center, located along Laclede Avenue near Spring Hall, has 20 bedrooms for SLU Jesuits and five for guests, a chapel, dining space and meeting rooms.

## CORE VALUES

Full rollout of the first University-wide core curriculum for undergraduate programs began in the fall of 2022. Later praised by the external reviewers for SLU's 2024 Mission Priority Examen, the 32-hour core is based on Ignatian pedagogy and ensures a common intellectual experience grounded in the liberal arts for all undergraduates.

## COMMITMENT TO CURA PERSONALIS

To continue fostering a culture that cares for the whole person, the University implemented both small and big changes to enhance well-being on campus. The University Counseling Center expanded hours, offered sessions in residential halls and added group counseling. Becoming a JED Campus in fall 2022 helped the University evaluate these initiatives.

The Jed Foundation (JED) is a nonprofit that works to protect emotional health and prevent suicide in adolescents and young adults. Its four-year JED Campus program helps schools develop new programs, policies and systems that build upon existing mental health, substance misuse and suicide prevention efforts.

## SLUCARE CLINICAL PRACTICE JOINS SSM HEALTH

SLU's academic medical practice was integrated with SSM Health, creating a single care delivery system that resulted in improved patient care for the St. Louis region, a stronger medical practice, and additional resources for student, faculty and facilities support.

## RESEARCH 1

In February, the Carnegie Classification of Institutions of Higher Education officially recognized Saint Louis University as a "Research 1" university, placing SLU among the most highly productive research institutions in the nation. This achievement is a major milestone in a journey that began in 2017 to grow the University's research enterprise and raise its profile as one of the world's leading Jesuit research institutions. (See story on page 18.)



Edward A. Doisy Research Center

SARAH CONROY

## COMMUNITY ENGAGEMENT DISTINCTION

Saint Louis University earned the 2024 Community Engagement Classification from the Carnegie Foundation for the Advancement of Teaching and the American Council on Education.

SLU is one of 368 campuses nationwide holding the classification, which has been the leading framework for institutional assessment and recognition of community engagement in U.S. higher education for nearly two decades.

## NEIGHBORHOOD PLANS ON TARGET

Long-sought by the Midtown Redevelopment Corporation, a new Target store, located along Grand Boulevard between SLU's North and South campuses, opened in July 2024.

The store fills a void of anchor retail tenants along the Grand corridor and is part of a \$60 million mixed-use development called The Edwin, which includes 199 luxury apartments.

The project is located within the 400-acre SSM and SLU redevelopment area, which has been a catalyst for \$2.02 billion in completed and planned projects in the vicinity of the University. ☒



Class notes

**1964**

**PATRICK C. CULLINANE** (A&S) retired as director of the University of California at Berkeley Retirement Center. He chairs the Council of the University of California Retiree Associations’ triennial survey of staff retirees. He lives in Oakland, California, with Barbara Byrd, his wife of 37 years.

**1968**

**PEDRO CARTAYA, S.J.** (A&S ’68, GRAD A&S ’70, GRAD A&S ’79) is managing director of the Fr. Benito Vieñas, S.J., Observatory at Belen Jesuit Preparatory School in Miami. In late 2023, the Vatican Observatory helped get an asteroid orbiting between Mars and Jupiter named in his honor, Asteroid Cartaya #623031.

**1970**

**BILL McDERMOTT** (A&S) received the fifth annual Clay Berling Media Career of Excellence Award from United Soccer Coaches. For more than 50 years, McDermott has been the voice of soccer at all levels. He covered the 1970 FIFA World Cup in Mexico for KMOX radio in St. Louis and began his television broadcast career in 1972, calling the North American Soccer League. McDermott has served as the public address announcer for Saint Louis University since 1972.

**1971**

Support SLU on Your Schedule

Your recurring gift of any size can help Saint Louis University expand access to a transformative education, advance outstanding athletics, drive leading-edge research and strengthen community outreach efforts.

Support any fund at SLU. Monthly, quarterly, biannual and annual options are available, and you can set any date in the future for your payments to begin.

SCAN THE QR CODE OR VISIT [QRCO.DE/UTAS](https://qrcode.utas.edu) TO GET STARTED.



**1973**

**SUSAN CROCE KELLY** (GRAD A&S), an author and former newspaper reporter, won the 2024 Missouri Literary Award. Her book *Newspaperwoman of the Ozarks: The Life and Times of Lucile Morris Upton* tells the story of a pioneering journalist. Kelly and her husband, Joel

Kirkpatrick, live in Springfield, Missouri, where she is the managing editor of *OzarksWatch*, a magazine published by the Ozarks Studies Institute of Missouri State University.

**DR. WILLIAM W. PINSKY** (MED) received the 2024 Special Recognition Award from the Association of American Medical Colleges. He lives in New Orleans.



**1978**

**DAVE SENAY** (A&S), former president and CEO of FleishmanHillard, was inducted into the PRWeek Hall of Fame in fall 2024.

**1979**

**RUSS WILLIS** (LAW) self-published *PG 103: Stuff Every Charitable Gift Planner Should Kinda Know*.

**1980**

**CHARLES NEMER** (A&S ’80, LAW ’83) is a co-managing principal at the McCarthy, Lebit, Crystal and Liffman Law Firm.

**1981**

**PAUL DEVINE** (A&S ’81, LAW ’93) is of counsel with the law firm Baker Sterchi Cowden and Rice in St. Louis. Devine has 30 years of experience in litigation.

**1974**

**LINDA MURPHY MARSHALL** (GRAD A&S ’74, ’78) wrote *Immersion: A Linguist’s Memoir*. Her career as a translator for the U.S. government took her on more than a dozen assignments to Africa, including during a coup attempt, a war and immediately following the abolition of apartheid.

**RICHARD NORTH** (LAW) received an award from the New Mexico Historic Preservation Division for his work protecting archaeological and historic sites throughout the state. He is retired from the University of Maryland School of Law, where he was associate dean and director of clinical programs. He lives in Santa Fe, New Mexico.

**1976**

**LAWRENCE J. ALTMAN** (LAW) co-authored “What to Do After a Crisis,” an article in the winter 2025 issue of *Rethinking Behavior*, a magazine by the Midwest Symposium for Leadership in Behavior Disorders. He lives in Overland Park, Kansas.

**KEY**

Following each alumni name in *Universitas* is an abbreviation of the college or school from which that alum graduated. Here’s a key to the abbreviations.

<b>A&amp;S</b> / COLLEGE OF ARTS AND SCIENCES	<b>LAW</b> / SCHOOL OF LAW
<b>CSB</b> / RICHARD A. CHAIFETZ SCHOOL OF BUSINESS <i>Includes alumni who graduated under the school’s previous names, the John Cook School of Business, the School of Commerce and Finance, and the School of Business and Administration</i>	<b>MED</b> / SCHOOL OF MEDICINE
<b>DOHS</b> / DOISY COLLEGE OF HEALTH SCIENCES <i>Includes alumni who graduated from the School of Allied Health Professions</i>	<b>P&amp;L</b> / COLLEGE OF PHILOSOPHY AND LETTERS
<b>DENT</b> / SCHOOL OF DENTISTRY	<b>PC</b> / PARKS COLLEGE OF ENGINEERING, AVIATION AND TECHNOLOGY
<b>ED</b> / SCHOOL OF EDUCATION	<b>PH</b> / COLLEGE FOR PUBLIC HEALTH AND SOCIAL JUSTICE
<b>GRAD</b> <i>Used in front of other abbreviations to indicate a graduate degree</i>	<b>PS</b> / SCHOOL FOR PROFESSIONAL STUDIES
<b>IT</b> / INSTITUTE OF TECHNOLOGY	<b>S&amp;E</b> / SCHOOL OF SCIENCE AND ENGINEERING
	<b>SW</b> / SCHOOL OF SOCIAL WORK <i>Includes alumni who graduated under the school’s previous name, the School of Social Service</i>
	<b>VSN</b> / TRUDY BUSCH VALENTINE SCHOOL OF NURSING <i>Includes alumni who graduated from the School of Nursing</i>

**1982**

**DR. JOHN CALLAHAN** (GRAD) was installed as president of the American Association of Orthodontics in 2024. He is in private practice in central New York.

**DANA (LAMBLE) MCWAY** (DOHS ’82, LAW ’88) serves as the clerk of court for the U.S. Bankruptcy Court for the Eastern District of Missouri. She received the 2024 Director’s Award for her work in helping bankruptcy courts return unclaimed funds to their rightful owners.

**1984**

**MARC ELLWEIN** (DOHS ’84, ’92) retired in 2023 after 39 years of clinical work as a physician assistant in primary care, ENT and orthopedics.

**PAUL MANGIERI** (LAW) is CEO and managing partner of Barash and Everett LLC.

**1986**

**DEBORAH (ESENBERG) WIRTEL** (A&S) is a medical editor for the National Pain Council based in Raleigh, North Carolina.

**1987**

**TODD SIWAK** (LAW) is chairman of the board of the Jewish Federation of St. Louis, a philanthropic, planning and community-building organization. His term began in January. Siwak is a founding partner of The Encore Group, a private equity fund focused on consumer services.

**1988**

**DR. ALICE (CHUPP) SMITH** (GRAD CSB) was elected to the National Academy of Engineering’s Class of 2025. She is the Joe W. Forehand Jr. Distinguished Professor in the Department of Industrial and Systems Engineering at Auburn University in Alabama.

**1990**

**RAMON BAHL** (CSB ’90, GRAD CSB ’92) is the co-founder and owner of ATB Technologies, which was named to *Inc.* magazine’s 2024 list of the fastest-growing private companies in America.

**RODNEY MASSMAN** (LAW) is acting general counsel at the Missouri Public Service Commission in Jefferson City. His career has spanned more than 30 years across Missouri state government in various law-related positions. He lives in Columbia, Missouri, with his wife, Valerie.

**KAREN MCCARTHY** (LAW) received the Robert Walston Chubb Award, one of the 2024 For the Common Good Awards presented by Legal Services of Eastern Missouri. McCarthy has served as Legal Services’ board treasurer for seven years and has been on the board for 16 years. She lives in St. Louis.

**1991**

**DR. JAY E. HARKER** (LAW) published an estate-planning book in 2024, *What Could Go Rwrong? The Definitive Guide to Choosing the Right Trustees to Drive Your Estate-Planning Bus, and How Things Can Go Horribly Wrong If You Don’t*, based on his 40-plus-year career in the trust business in St. Louis.

**CHERYL (SCHREINER) VENABLE** (CSB ’91, GRAD CSB ’96) is first vice president and chief operating officer of the Federal Reserve Bank of Atlanta. She has spent her career in the Federal Reserve System, most recently as chief of payments operations for Federal Reserve Financial Services and as an Atlanta Fed executive vice president.

**1994**

**MATTHEW ROSSITER** (LAW) joined the St. Louis office of Lathrop GPM as a partner in January. He came to the firm from Rossiter and Boock, LLC.

**1995**

**GREG GOLD** (LAW), an attorney with his own firm in Denver, has been supporting the Ukrainian war effort for years. He serves as one of several directors for the Ukraine Aid Fund in Denver, and he has made four trips to Ukraine to deliver tactical equipment and supplies. For his humanitarian efforts, the Ukrainian government awarded Gold with the “For Dignity and Patriotism Award.”



Class notes

**1996**  
**JENNIFER (CLUMP) DAVIS** (LAW), partner and group leader of trusts and estates at UB Greensfelder, was named to the Nine PBS board of directors last fall. She lives in St. Louis.  
**DR. JOHN S. TIEMAN** (GRAD A&S) retired after more than 40 years in the classroom.

**1998**  
**MARY LOPINOT** (LAW) was appointed last fall to a 14-year term as a U.S. bankruptcy judge for the Southern District of Illinois. After law school, she joined Mathis Marifian and Richter Ltd., focusing on bankruptcy, tax procedure and litigation, and general business law. She left private practice after 22 years and spent the last four years as a staff attorney for the office of Russell C. Simon, standing Chapter 13 trustee.

**AMANDA McNELLEY** (CSB) was appointed to circuit judge in St. Louis County Circuit Court in November 2024. She served as an associate circuit judge for five years before that.

**2001**  
**BRAD HENRY** (A&S) is a partner at IPI Wealth Management, which he joined in 2022, bringing nearly 17 years of experience from a local manufacturing and construction company. He lives in Mt. Sterling, Illinois, with his wife, **ABBY (BAUCH) HENRY** (GRAD DCHS '01, '03), and their three children.

**2002**  
**CARDINA JOHNSON** (LAW) is deputy general counsel for the Illinois Education Association, a labor organization that represents public school staff members. In August 2024, she was an honoree of the *St. Louis Business Journal's* Corporate Counsel Awards.

**DR. DORA B. SCHRIRO** (LAW) is an expert in corrections and immigration detention and has been the principal of her own consulting group since 2019. She also serves as a commissioner on several professional organizations, notably the American Bar Association, the Commission on Immigration and the Women's Refugee Commission. Before opening her own practice, she

served as the Connecticut Department of Emergency Services and Public Protection commissioner, director of the Missouri and Arizona departments of corrections, and commissioner of the St. Louis City Division of Corrections and the New York City Department of Correction.

**2004**  
**RUDY FORS** (CSB) is chairman, president and CEO of Twin Cedars Bank, which was recognized on *Inc.* magazine's 2024 list of the fastest-growing private companies in America.

**DAN WRIGHT** (LAW) became an associate judge for the Seventh Judicial Circuit, Sangamon County, Illinois, in November 2023.

HELP SLU DO MORE WITH YOUR SUPPORT

Keep mailing costs down by updating or adding an email address to your alumni record at [slu.edu/alumni](https://slu.edu/alumni).

No matter where your post-graduation life has taken you, you are a valued member of the Saint Louis University community for life.

**2005**  
**KEISA JOHNSON MONROE** (LAW), an associate general counsel for Elevance Health (formerly Anthem Inc.), was honored with the *St. Louis Business Journal's* Corporate Counsel Award in 2024.

**2006**  
**KATE BIAGI-RICKERT** (CSB '06, SW '06) is vice president and charitable solutions officer at Baird Trust Co. She lives in Louisville, Kentucky.

**RACHEL (OBEIDZINSKI) BORLAND** (PC '06, '07) was awarded a Silver Snoopy, one of NASA's highest honors, in September 2024 for engineering contributions to a crewed flight.

**KATHRYN DINOLFO** (CSB), a senior product manager at American Orthodontics, is vice president of the 2025 board of directors for Above and Beyond Children's Museum in Sheboygan, Wisconsin.

**APRIL (MENKE) KIRKLEY** (DCHS '06, GRAD PH '08, LAW '16) is a partner at Thompson Coburn in St. Louis. She is a former health care administrator who represents health care entities in a range of transactional, regulatory and compliance matters.

**2009**  
**SHANAE CHAPMAN** (A&S) received the 2024 Excellence in Innovation Award from the Center of Innovation and Entrepreneurship at Harris-Stowe State University.

**JESSICA CURYTO** (GRAD CSB) is a research staff member in the information technology and systems division of the Institute for Defense Analyses' Systems and Analyses Center.



**MELISSA MARQUIS** (GRAD PH) has worked in public health preparedness for 16 years. She recently began a new liaison role between her local health district and local emergency management office to develop a medical resiliency program. She also published a book, *Invisible: A Nurse-Turned-Patient's Resource to Living Well with Autoimmune Disease*.

**KAREN (STIRNAMAN) RIPPELMAYER** (LAW) joined Stinson LLP in July 2024 as a partner in the firm's real estate and public finance practice division. She is in the St. Louis office.

**2010**  
**AMANDA (MUELLER) POWELL** (LAW) has held numerous roles in more than two decades at Alberici Constructors Inc. As assistant general counsel for the past three years, she has been instrumental in the company's efforts to expand services nationwide. In 2024, she was honored with the *St. Louis Business Journal's* Corporate Counsel Award.

**1972** Anderson is born in St. Louis to a teacher and a stockbroker. Both parents become Baptist ministers.

*"My parents said I always had a sense of calmness about who I am and a sense of purpose at a very early age."*

**1988** While in high school at Crossroads School, she tours Saint Louis University.

*"There's a vibrant feel about SLU, being in the heart of St. Louis. And as a Jesuit university, it is centered in God. That was a big piece for me — knowing that it could help me continue to grow in my faith."*

**1993** On Aug. 14, she marries Stanley Anderson, whom she met by literally bumping into him at SLU. He will earn three degrees at the University (A&S '91, GRAD A&S '96, MED '01) and become an OB-GYN.

**1994** She graduates and starts teaching fourth grade in St. Louis' Riverview Gardens School District.

*"My parents instilled in me that teaching is a calling and that we have a responsibility to service above self. It's why I feel so connected to the Jesuit mission."*

She gives birth to her daughter, Whitney (PH '16, GRAD PH '21).

**1996** Her son, Christopher, is born.

**1998** She becomes principal at Clark Accelerated Academy in St. Louis.

HOW I GOT HERE



**Dr. Tiffany (Brown) Anderson**  
ED '94, GRAD ED '01  
MAKING A DIFFERENCE IN EDUCATION  
— by Amy Garland

**2001** She earns a doctorate in education leadership from SLU.

**2003** Anderson is the first African American to become assistant superintendent in the Rockwood School District in St. Louis County.

**2005** Her family relocates to Virginia, where she gets her first superintendent position. She leads crisis and threat assessment teams during the Virginia Tech shooting in 2007.

**2009** She returns to the Midwest for a superintendent role in Missouri at University Academy and as chief academic officer for Kansas City Public Schools.

**2012** Anderson becomes superintendent of St. Louis' Jennings School District, which faces a \$1.8 million budget deficit. What might be more daunting than the shortfall is her commute: 270 miles (one way) from her home in Overland Park, Kansas.

*"You are anointed for the task you're given. That's the only way I can explain waking up at 2 a.m., getting to work at 6 a.m., being a crossing guard at 7 a.m., and ending the day at 4 or 5 p.m. and driving back home."*

Anderson's leadership results in a budget surplus and accreditation for the district. She integrates public health initiatives, including a school-based health clinic and homeless shelter for students in need.

**2015** *The Washington Post* refers to Anderson as "the woman who made schools work for the poor." *Education Week* says she's one of the nation's "16 Leaders to Learn From."

**2016** She becomes the first Black woman superintendent of Topeka Public Schools in Kansas, home of the landmark Brown v. Board of Education legislation that ended legal segregation.

**2021** In February, Anderson testifies virtually to Congress about the digital divide. In August, she delivers SLU's commencement address at Chaifetz Arena in a belated ceremony for May 2020 graduates.

**2022** She receives a Master of Divinity from Nazarene Theological Seminary.

*USA Today* selects her as the Woman of the Year Honoree for Kansas.

**2023** She receives the national 2023 Women in School Leadership Award from the American Association of School Administrators.

**2024** Her third book, *Building Parent Capacity in High Poverty Schools: Actions for Authentic Impact*, is featured on CBS News Sunday Morning.

**2025** In addition to her career in education, Anderson has become a Methodist deacon. And she meets virtually with her children for dinner every Sunday.

*"There is a great deal of intentionality in much of what I do. You always have time for the things that you prioritize."*



Class notes

Alumni Merit Awards

These annual awards recognize the achievements of alumni from across the University. The 2025 honorees were celebrated during May commencement.

**Dr. Akberet Boykin Farr** (CSB ’93, GRAD CSB ’95, GRAD ’02) is vice president of human resources corporate functions at Emerson. A leader dedicated to empowering others and driving positive change, she is a member of the SLU board of trustees. She is also involved with other nonprofit boards, including KIPP St. Louis, the Urban League of Metropolitan St. Louis and City Academy.

**Hon. Margaret Donnelly** (SW ’75, GRAD SW ’77, LAW ’88), a retired St. Louis County circuit judge, dedicated her career to advocating for children and families and serving the greater good. Thanks to her work over the past four decades as a social worker, lawyer, state representative, public health director and judge, countless Missouri children live safer, healthier lives.

**Deidre Griffith** (GRAD PH ’03) puts those most at risk of poor health outcomes at the center of her work as vice president for community health improvement at BJC HealthCare. As a champion for effective interventions, greater accessibility and practical solutions, she has helped to eradicate health disparities in the metropolitan area for the past 20 years.

**Marian “Bo” Vatterott Mehan** (VSN ’74, LAW ’82), an attorney at Lewis Rice LLC, has a passion for serving those in need, ensuring equitable access to quality education and guiding individuals in their charitable endeavors. As the vice chair of the SLU board of trustees, Mehan plays a significant role in advancing the University’s mission and creating transformational impacts for students, Billiken athletes and the community.

**Gregory P. J. Most** (A&S ’81) traces his love of art history to his undergraduate mentor, Dr. Carolyn J. Valone, a former SLU professor. As the chief of the Department of Image Collections at the National Gallery of Art in Washington, D.C., Most shares his knowledge to enhance the research of scholars worldwide who rely on the National Gallery’s extensive collections of art images.

**Dr. Susan W. Nall** (GRAD ED ’75) has advocated for children’s education and parental involvement in child development since the 1970s. She began her career as a classroom teacher and was a professor of education at Southern Illinois University-Edwardsville for more than 30 years. As a professor emeritus, she continues to mentor faculty members, and her expertise has been sought after locally, nationally and globally.



**Dr. Saijai Peng** (GRAD DENT ’85) has been an orthodontist and dentofacial orthopedic practitioner for 40 years, caring for her patients with the high standards and compassionate service she honed at Saint Louis University. She continues SLU’s tradition of excellence while also mentoring dental students and orthodontic residents at the Herman Ostrow School of Dentistry of USC.

**David J. Posek** (PC ’66), retired president of Lockheed Martin Aircraft and Logistics Centers, continues to give back to his *alma mater*, the community and the Catholic Church. He understands the University’s impact on future leaders in the aerospace industry who share a passion for service, and he and his wife established a scholarship to make a SLU education accessible to more students.

**Kevyn Schroeder** (VSN ’75, GRAD PH ’83) has been led by her commitment to the *magis* (“more”) of Jesuit education. Her journey has taken her from researching infectious diseases and becoming a nurse practitioner to changing her career to be a financial advisor with Stifel Financial Corp. She is a member of the Trudy Busch Valentine School of Nursing Dean’s Executive Advisory Board.

**Laura Purcell Verdun** (DCHS ’89, GRAD DCHS ’91) helps others find and reclaim their voices. As a speech pathologist and owner of Voicetrainer LLC, Verdun gives hope to clients with speech and swallowing disorders and empowers professionals to elevate their speaking skills. She advocates extensively for marginalized populations impacted by speech disorders.

**Dr. Susan P. Willman** (A&S ’78, MED ’82) believes that when medical students take care of their mental and physical health, they can take better care of their patients. In 2022, she contributed a lead gift for SLU’s University Counseling Center to establish WellSPACE, campus areas that promote holistic wellness. Willman retired from her role as an obstetrician and gynecologist at Contra Costa Regional Medical Center.

PIONEER AWARD

**Lucina “Lucy” Díaz** (LAW ’17) advocates for diversity in higher education and the legal profession and is committed to serving others as a judicial law clerk for the Missouri Court of Appeals, Eastern District. She volunteers in a mentorship program for SLU law students and has taught courses to undergraduates in SLU’s Law Scholars Program.

FROM LEFT, BACK ROW: Schroeder, Farr, Mehan and Nall  
FRONT ROW: Griffith, Donnelly, Diaz, Peng and Verdun

2011

**DR. DANIEL GARCIA** (GRAD PH) completed a doctorate in public health from A.T. Still University in 2023. His latest research explores the relationship between water contamination and cancer incidence across the southwestern United States.

**TOM WIESE** (LAW) is chief legal officer and corporate secretary of MTM Inc., a health care and transportation management company. Wiese received a Corporate Counsel Award from the *St. Louis Business Journal* in 2024.

**ASHLEY ZIEGLER** (DCHS ’11, GRAD DCHS ’13) married **BRYAN BEASLEY** (CSB) in August 2024.

2012

**KATIE CASTREE BENYO** (PH) delivered a presentation at the American Society for Quality World Conference on Quality and Improvement in San Diego in May 2024. She also published two journal articles last year: “Better Together: Quality partners can be the impetus to improve medical laboratories and all healthcare” in *Quality Progress* and “Rightsizing Your Workforce: The unspoken need for labor optimization to take the impact of continuous improvement to the next level” in the *Lean & Six Sigma Review*.

**DENISE CHILDRESS** (LAW) is an associate circuit judge in St. Charles County, Missouri.

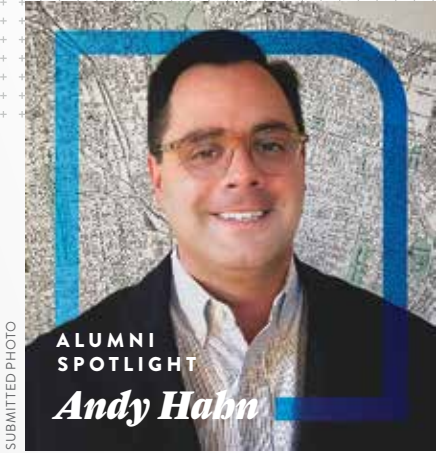
**DR. AVI GOLDBERG** (GRAD) began his presidency of the Canadian Association of Orthodontics in September. Goldberg is an orthodontist on Prince Edward Island, Canada.

2014

**TAYLOR ESSNER** (A&S ’14, LAW ’17) is a member of the St. Louis-based law firm Lewis Rice. Essner joined the firm in 2017 and practices in the litigation department.

2015

**TIM MCCOY** (CSB) is director of strategy at Tarlton, St. Louis’ largest women-owned general contracting and construction management firm. A certified public accountant, McCoy focuses on business development plans and work acquisition strategies.



SUBMITTED PHOTO

As a young boy standing roughly half the height of his grandparents’ wall, **Andy Hahn** (A&S ’97) surveyed the oversized world map that marked the couple’s recent travels. What he didn’t realize at the time was that his affinity for maps and history would eventually orient him to a career where the past, plats and publishing would intersect. Fast-forward to 2024, when the coordinates merged, and Hahn’s first book, *Mapping St. Louis: A History of the Gateway City in 40 Rare Maps*, debuted. The book captures St. Louis’ historical significance through the lens of city maps.

“Maps are the ultimate spatial tools for helping people better understand the world around them,” Hahn said “They tell such a great all-encompassing history.”

Hahn, who earned bachelor’s degrees in history and art history at SLU, was eager to tell the story of his hometown through a visual perspective, he said. He first pitched his idea, inspired by similar storytelling approaches used in other cities, to Reedy Press in 2008.

Hahn and his wife, writer Valerie Schremp Hahn, were both working and raising a family at the time, making it challenging to pursue the book endeavor. The time needed to be right. In 2023, Reedy Press revisited the proposal, asking Hahn if he was still interested in authoring the book.

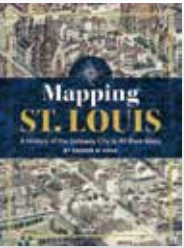
With access to 200 maps chronicling St. Louis’ evolution, he also knew about the city’s history from his role as director of the Campbell House Museum, the only building remaining from the Lucas Place neighborhood in downtown St. Louis. Hahn also did two internships at SLU’s Samuel Cupples House Museum that enriched his love of art and history. Hahn was ready to navigate the publishing world.

Hahn worked feverishly for 10 weeks, dedicating four to seven hours each night to writing after full days at the Campbell House. He winnowed his map collection to 40 to shape the historical narrative — no small feat for a city 260 years in the making.

Hahn carefully considered the map-maker’s angle to determine which maps to include, knowing that intentions can be obscure, even from the titles themselves, he said. He selected “1767: The First Map of St. Louis” to introduce the story of the “Gateway to the West.”

Throughout the following 160 pages, the city unfolds through pivotal maps and stories illustrating its growth, challenges, divisions, disasters and innovations. From the catastrophic “1849: The Great St. Louis Fire” to the celebratory “1904: Forest Park Welcomes the World,” and concluding with “2021: New St. Louis Wards,” Hahn not only documents the past but also inspires readers to envision future explorations. In addition, he notes SLU’s historic 1818 founding in the 1822 and 1865 map sections. As the first institution of higher learning west of the Mississippi River, the campus is pictured in most of the book’s maps.

“The main takeaway from the book is that a city’s history is always evolving and creating opportunities to make new maps,” Hahn said. “*Mapping St. Louis* leads readers to consider what the maps of tomorrow will reveal in the future.” — by Debbie Dugan





Class notes

**MAXWELL MURTAUGH** (LAW) joined the St. Louis office of Lathrop GPM in January. His practice focuses on resolving disputes involving trusts, estates and guardianships.

**DR. DESHAE REDDEN** (PS) is assistant vice president of operational excellence, planning and learning at Logan University in Chesterfield, Missouri.

2016

**ALEC ROSENBLUM** (LAW) is a partner at Rosenblum Robbins LLC, which was formed in the fall of 2024. The firm’s biggest client is Strategic Capital Consulting, a lobbying and consulting firm where Rosenblum also is general counsel.



SARAH CARMODY

NEW SCHOLARSHIP HONORS PESTELLOS’ LEGACY

The Saint Louis University Student Government Association established a new named scholarship in honor of SLU’s 33rd president, Dr. Fred P. Pestello, and first lady, Dr. Fran Pestello. The **Drs. Fred and Fran Pestello**

**Legacy of Leadership Award** will annually honor one outstanding undergraduate who exemplifies the defining pillars of the Pestellos’ leadership and legacy at SLU.

STUDENTS WHO ARE AWARDED THIS SCHOLARSHIP WILL:

- ◆ Uphold SLU’s Catholic, Jesuit mission through education, ethics and service
- ◆ Maintain academic excellence
- ◆ Actively engage in community service in St. Louis

GIFTS TO EITHER FUND CAN BE MADE BY SCANNING THE QR CODE OR BY VISITING [QRCO.DE/UTAS](https://qrcodes.utah.edu).



2021

**OLIVIA MITCHELL** (LAW) is a senior associate attorney at the Stange Law Firm in St. Louis.

2023

**ISAAC BECK** (S&E) was one of eight men who entered the Society of Jesus at the newly opened Novitiate of St. Stanislaus Kostka in Denver in August 2024.

**CHRISTOPHER BROWN** (LAW) is an associate in the St. Louis office of the law firm Lewis Rice.

**DAKOTA RECKAMP** (LAW) joined Tucker Ellis LLP as a mass tort and product liability associate in the firm’s St. Louis office.

**LISA VERITY** (LAW) is an associate attorney at Baker Sterchi Cowden and Rice in St. Louis.

2024

**MITCHELL GORDON** (LAW) is an associate in the St. Louis office of law firm Lewis Rice. Before attending law school, Gordon served in the U.S. Air Force for four years.

**CHRISTINE HALL-SCHWEISS** (LAW) is an associate with the law firm Lewis Rice. She is in the St. Louis office.

**MIRANDA NOLAN** (LAW) joined the St. Louis office of law firm Lewis Rice as an associate last fall.

**CLARE NOWOGROCKI** (LAW) is an associate at the law firm Lewis Rice. Before law school, she spent almost a decade working in student development and experiential learning at the University of Chicago and Washington University in St. Louis.

**MANNI JANDERNOA WATSON** (LAW) is an associate attorney at Baker Sterchi Cowden and Rice in St. Louis.

The recipient will also be a champion for social justice, advocating for equity and inclusion while contributing to institutional development through leadership, research or campus initiatives.

The award was announced at SLU’s 2025 Scholarship Dinner in April, where the Pestellos were also recognized for their transformational leadership.

The scholarship joins the **Pestello Family Scholarship Fund**, which the Pestellos established through a 2014 gift to benefit the education of undergraduate students throughout the University.

In memoriam

ALUMNI

1944

William Bean (PC)

1945

Margaret (Golski) Kuzio (VSN)

1946

Gennaro Gargano (PC)

1948

Marian (O’Toole) Coleman (VSN)

Edward Cooper (MED)

Claude Giles (PC)

Audrey (Jacob) McLane (VSN)

Mary Lou (Schnoebelen) Reither (A&S)

**Leo Weber, S.J.** (A&S), died Feb. 3, 2025. He was 98 years old, a Jesuit for 81 years and a priest for 68 years. After starting his ministry in Belize, Weber served in the former Missouri Province. He later was president of St. John’s College in Belize.

1949

Esther (Moran) Wilson (VSN)

Leonard Woker (IT)

1950

Edward Burns (A&S)

Cesar Gomez Jr. (MED)

Wilbur “Ken” Manchette (DENT)

1951

**Roy Clay Sr.** (A&S) died Sept. 22, 2024, at age 95. One of SLU’s first African American graduates, in 1965, he helped establish Hewlett-Packard’s first computer division. He later became a leader in the field of electrical safety test equipment and wrote the book *Unstoppable: The Unlikely Story of a Silicon Valley Godfather*.

Donald Goodman (PC)  
William Sekscienski (PC)

1952

Arthur Lenzini (DENT)

Paul Lonergan (IT)

John O’Hare (LAW)

Robert Schneider (LAW)

Felix Winston (CSB)

1953

John Brunner (MED)

Mary Ellen (Cornell) Brunner (VSN)

Maryanna (McMullan) Coad (VSN)

**Albert Hrubetz III** (IT) died Feb. 26, 2025, at age 96. As chief geophysicist at Continental Oil Co. (Conoco), he discovered a major oil field offshore Dubai, which led to the transformation of the area’s economy. His career included leadership roles at Texas Pacific Oil Corp. and at his own Hrubetz Oil Co. He received SLU’s Alumni Merit Award.

1954

Kathleen (Lane) Delany (A&S)

Robert Faust Sr. (CSB)

John Ferry (DENT)

Virginia (Pecher) Fister (A&S)

Robert Hamilton (IT)

Helen (Venker) Mannion (A&S)

Daniel Marra (A&S)

James McHugh (A&S)

Robert Shores (CSB)

Leonard Walts (MED)

1955

Marilyn Grow-Maienza (A&S)

Jerome Hilmes (PC)

Daniel Keating Jr. (CSB)  
Lillian Kelledy (VSN)  
Jeannine (Diver) McGlynn (VSN)

Patricia (Moore) Meara (DCHS)

Joann (Woerner) Ruoff (A&S)

Jane (McCabe) Wilcox (CSB)

Patricia (Fawcett) Winkelmann (A&S)

Richard Wittmann (A&S)

1956

**Dr. Lawrence Barmann** (A&S), a longtime SLU professor, died April 25, 2025, at age 92. Ordained in 1963, he left the Jesuit order in 1979. He joined the SLU School of Divinity faculty and continued with the departments of theological studies, history and American studies, which he led from 1983-88 and 1999-2000. He retired in 2001. He received SLU’s Nancy McNeir Ring Award for Excellence in Teaching.

Margaret Berghold, S.S.N.D. (ED)

Carol (Kohlruss) Carman (A&S)

Elbert Clark Sr. (PC)

John Cordoue (A&S)

Kenneth Fiehrer (DENT)

Edward Hamilton Jr. (IT)

Felix Jabczynski Sr. (MED)

Richard Kleine (IT)

Antonio Marks (DENT)

Wesley Meyers Jr. (IT)

Robert Miller (PC)

**Dr. Patricia L. Monteleone** (A&S ’56, MED ’61, GRAD ’91), dean emerita of the School of Medicine, died May 4, 2025, at age 89. One of the first women appointed dean at a medical school in the United States, she started her career at SLU in 1967 as assistant professor of pediatrics. In 1986, she became vice president for medical

affairs at Cardinal Glennon Children’s Hospital. She was dean at SLU’s medical school from 1994 until she retired in 2008. Monteleone Hall on campus is named in her honor, as is the Drs. James and Patricia Monteleone Endowed Chair in Pediatric Gastroenterology.

John Moroney (MED)

Francis Timmins (PC)

1957

Joe Belew (MED)

Ruthellyn (Harle) Bobak (VSN)

Robert Eilerman (CSB)

Frank Hunleth (MED)

Merle Jacobs (MED)

Patricia Lorenz, C.S.J. (DCHS)

Thomas Martens (CSB)

William Martin (DENT)

Evelyn (Braun) Ressler (DCHS)

Charles Schmid (CSB)

James Wehrheim (CSB)

Frances Wessel, S.S.N.D. (A&S)

1958

Jerry Birk (A&S)

Charles Bradford (IT)

Rosemary Dalton, C.S.J. (ED)

Joan (Leritz) Dowler (A&S)

Donald Kaperick (SW)

James Murphy (LAW)

Joyce (McGinty) Petrunia (VSN)

Raymond Ruediger (CSB)

William Sommer Sr. (CSB)

William Stadnyk (IT)

Richard Ward Jr. (IT)

1959

Louis Benjamin Sr. (A&S)

Robert Brangle (MED)

Harriette (Mauermeyer) Carlough (VSN)

Elizabeth Cleinmark (VSN)



In memoriam

Rita (Vessell) Flaherty (vsN)

George Gemmingen (MED)

Ignatius Giganti (DENT)

Kathleen (Poirot)  
Griesemer (A&S)

Lois (Macaluso)  
Khatchadourian (vsN)

Margaret (Cinnater)  
LaMure (DCHS)

Martin Lanfranco (PC)

Darrell Lynn (PC)

Thomas Macauley (CSB)

Raymond Mertens (CSB)

Ronald Prosperi (A&S)

Stephen Redshaw (CSB)

Donald Schmidt (PC)

Roland Schoenhoff (IT)

Victor Volland Jr. (A&S)

1960

Walter Barrett Jr. (CSB)

Stephen Blaes (CSB)

Joan (Foltz) Briscoe (DCHS)

Calvin Currinder Jr. (CSB)

James Ferrick Jr. (IT)

George Frein (A&S)

James Helein Sr. (IT)

Richard Kaufman (CSB)

Bernard O’Reilly (LAW)

John Pollard (CSB)

Elizabeth (Fitzgerald) Quinn (vsN)

Harold Rohrer (MED)

Winfred Sanford Sr. (CSB)

Ronald Zollner (PC)

1961

Alfred Eberhardt Jr. (A&S)

Thomas Eggleston (MED)

Edward Hogan (A&S)

Kathleen (Perkinson)  
Lange (DCHS)

Ann (Callahan)  
Mandelstamm (A&S)

Daniel Nealon (MED)

Michael O’Keefe (LAW)

Ruth (Steinbicker) Scharf (DCHS)

Robert Willcoxon (A&S)

1962

Maureen (Nash)  
Baudendistel (A&S)

Arthur Duraski (CSB)

Harry Hadd (A&S)

Cletus Henry (A&S)

Edmund Klein Jr. (IT)

Frank Magiera (PC)

Lynn Perry (PC)

Donald Rauscher, S.J. (A&S)

John Redmond (LAW)

Albert Rotermund Jr. (A&S)

Barbara (Wade) Waible (vsN)

1963

Jerome Basinski (MED)

Loretta (Eufinger) Cannon (A&S)

Harry Evoy (PC)

Mary Sandra (Nordstrom)  
Guay (SW)

Michael Heidenry (A&S)

Roger Horrell (PC)

Annrita Johnson, P.B.V.M. (vsN)

Robert Lipic (A&S)

James McGoldrick Jr. (MED)

Richard Porraro (DENT)

Edward Rader (MED)

Karen (Higgins) Scanlon (A&S)

**Thad Strobach** (A&S ’63, GRAD ED ’65), who coached SLU’s first women’s basketball team, died on Dec. 24, 2024, at age 84. Strobach put together the team for the 1975-76 season and spent four years as coach. He was inducted into the Missouri Basketball Coaches Association Hall of Fame in 2004 and the Missouri Sports Hall of Fame in 2024.

Richard Twohig, S.J. (A&S)

LaVerne Wester, C.P.P.S. (A&S)

1964

Barbara Barbato, S.L. (A&S)

Herman Bodewes (LAW)

William Body (CSB)

Thomas Bottini (A&S)

Edward Costigan Jr. (A&S)

Bruce Grim (PC)

Valerie Hanneke (A&S)

Willis Simpson Jr. (DENT)

1965

Thomas Becherer (A&S)

Marvin Cooper (MED)

Michael Dardas (CSB)

Richard Doyle (A&S)

Linda Leinicke (A&S)

Frances (Cerne) Leone (vsN)

Albert Messore (PC)

Roy Mongelli (PC)

Paul Mydler (CSB)

Paul Novelty (CSB)

Bernice Rubinelli (ED)

Carolyn (Stenger) Talbott (vsN)

Harry O. Tiggard Jr. (A&S)

Thomas Venditti (PC)

Mary Ann Wilhelm, R.S.M. (vsN)

1966

John Budge (MED)

Alois Heiligenstein (CSB)

Ralph Helmsen (A&S)

Trina (Terleck) Horvath (vsN)

Runar Johnson (DENT)

David Lieb (PC)

Vincent McCormick (MED)

Kenneth Olsen (A&S)

Frank Synek (A&S)

Catherine Vatterott (A&S)

1967

Robert Barlow (CSB)

Jo Ellen (Terrill) Bauer (A&S)

Rene Cormier (IT)

Mary Cummings (ED)

Edward Donlon (LAW)

John Geismann (LAW)

**Dr. Robert “Bob” Hasenstab** (GRAD ED ’67, ’71), who founded and served as the first dean of SLU’s School for Professional Studies, died Sept. 30, 2024. He was 83 years old. He spent nearly 40 years working to support non-traditional adult learners at four Jesuit universities. He worked at SLU from 1994 to 2002.

Jane Hassett, C.S.J. (A&S)

Janis (Hehner) Karlik (DCHS)

Joseph Melchiorre Jr. (A&S)

James Pini (IT)

Michael Schmiz (CSB)

Carlos Torres (MED)

C. David Vogel (LAW)

Julia (Buser) Welch (DCHS)

1968

Jane (Saffo) Bainter (A&S)

Timothy Baker (MED)

F. Gilbert Bickel III (CSB)

Anne Carlino, O.S.F. (vsN)

Wenceslaus Church, O.F.M. (ED)

**Clare E. Fitzgerald, S.S.N.D.** (GRAD A&S), a renowned advocate for Catholic education, died Jan. 27, 2025, at age 100. She served as the provincial leader of the School Sisters of Notre Dame, president of the Leadership Conference of Women Religious and an appointee to the Vatican Commission on the Study of Religious Life.

Ben Goodin (LAW)

James Holloran (LAW)

Eileen Kelly, S.C. (ED)

Felipe Lapuente (A&S)

Henry Llewellyn (A&S)

Gary London (DENT)

**Pat McBride** (A&S), an Olympian and former men’s soccer player, died Dec. 11, 2024. He was 81. McBride was a midfielder for SLU for three seasons, winning national championships with the team in 1963 and 1965. He played professionally with the St. Louis Stars and was captain of the U.S. Men’s National Team. He was inducted into the Billiken Hall of Fame and the National Soccer Hall of Fame.

Edmund Quatmann (CSB)

Martha (Hillenbrand)  
Ragland (A&S)

Robert Reinhold (LAW)

Leon Sanford, S.J. (A&S)

Gerald Schaeffer (CSB)

Geraldine (Vaclavik)  
Specker (A&S)

William Tutka (IT)

Thomas Wehner (CSB)

1969

Christian Janson, S.M. (A&S)

Paul Kluba (CSB)

Thomas Lynde (DENT)

Mary Moser, R.S.C.J. (ED)

Sheila (Ricks) Ritchey (DCHS)

John Roedel Jr. (LAW)

1970

Denise Elliott (A&S)

Francis Fernandez (CSB)

**Steve Frank** (CSB ’70, LAW ’73), a former Billiken soccer player and member of the 1973 U.S. Men’s National Team, died Sept. 8, 2024, at age 76. While playing for SLU from 1966 to 1969, the team won two NCAA Championships. Frank spent six seasons with the St. Louis Stars. He was inducted into the Billiken Hall of Fame in 1995, and his name adorns the SLU Soccer Facility men’s locker room.

Mary June Hamblin (ED)

James Kaiser (CSB)

Carol (Ratermann) Murray (A&S)

Bernadita Peterson, S.A.C. (ED)

Margaret Poniewaz (A&S)

Primitiva (Lopez) Wagan (MED)

Alice Ward (ED)

1971

Janice (Kocur) Drew (vsN)

Philip Dwyer Jr. (CSB)

Mary Ann (Pexa) Honti (A&S)

Thomas Lang (LAW)

John Leech (ED)

Steven Nieuwendaal (A&S)

Laurie (Drone) O’Connor (ED)

Thomas Saranita (IT)

Eugene Utrup (ED)

1972

William Borgsmiller (MED)

Mary Gavan (ED)

Clark Habermehl (PC)

Edward Habert (MED)

John Lock II (MED)

Ervin Lofftus (LAW)

Judith (Noltkamper)  
Parrish (vsN)

Charles Poeschel (CSB)

Douglas Ries Jr. (PH)

Charles Sikora (A&S)

Jerome Spector (CSB)

Joseph Warnick III (CSB)

1973

Thomas Connelly (LAW)

John Dziduszko (MED)

Neil Fenske (MED)

Thomas Gilliam Sr. (ED)

Michael Haines (A&S)

Harriet Kearns (SW)

Dianne (Cruvant)  
Williams (vsN)

Kenneth Zehnder (MED)

1974

Leonard Cadieux (A&S)

Francine Cullari (ED)

Margaret Fox (LAW)

Janice Futrell, O.S.B. (ED)

Christine (Morgan)  
Gardiner (A&S)

William Helmuth (ED)

Jeanne Hermann (vsN)

Randy Lamotte (A&S)

Joseph O’Connor (A&S)

Patricia Ring, M.M. (ED)

1975

Mary Cross, O.S.F. (A&S)

Richard Hughes (LAW)

Juliana Lucey (A&S)

Dale Nichols (PS)

Margaret (Pursley) Quinn (vsN)

Mark Ross (MED)

John Struckhoff (CSB)

1976

Margaret (Hamilton)  
Behrendt (vsN)

John Bluhm III (MED)

Patricia Hogan (vsN)

Peter Jarosewycz (LAW)

Robert Meyer Jr. (PS)

Nancy O’Toole (PS)

R. Bruce Tepper Jr. (LAW)

1977

Mark Curry (A&S)

Barbara Dubbert (vsN)

Jerry (McNamara) Obst (vsN)

Ann Shaw (ED)

Kevin Yakuboff (MED)

1978

Charlotte (Trowell)  
Hanselman (ED)

Betty (Bell) Hill (PS)

Ralph Johnson (MED)

Karen (Pratte) Kiernan (vsN)

Daniel McDermott (A&S)

1979

Tyler Bateman (LAW)

Anne Caradonna (vsN)

R. Christopher Menhard (DCHS)

Betty (Mehner) Vogelsang (vsN)

1980

Robert Buss (A&S)

Elizabeth (Zipfel) Clamp (vsN)

Paul Cowdrey (PC)

James Keefe Sr. (LAW)

John Meyer Jr. (LAW)

Jean (Bante) Moore (LAW)

Michael Musich (LAW)

Gloria (Andes) Mutka (vsN)

Frederick Spencer (ED)

Gerard Wald, O.S.B. (vsN)

1981

Bessie (Hamilton) Brown (PS)

Allan Ellis (ED)

Marian Kelley, R.G.S. (SW)

David Nile (MED)

Michael Ridge (MED)

Robert Schmalzle (SW)

1982

Ricky Faccin (SW)

Kathleen Gillespie-  
Sanders (A&S)

Linda (Quint) Pivarnik (A&S)

William Sciortino (MED)

1983

Joan (Zimmerman) Cohen (LAW)

Edward Hearn (LAW)

Stephanie Kreis (LAW)

Robert Lewis (LAW)

George Williams Jr. (CSB)

1984

Christopher Coughlin (CSB)

Curtis Hedberg (A&S)

David Jaenke (CSB)

David Lantz (ED)

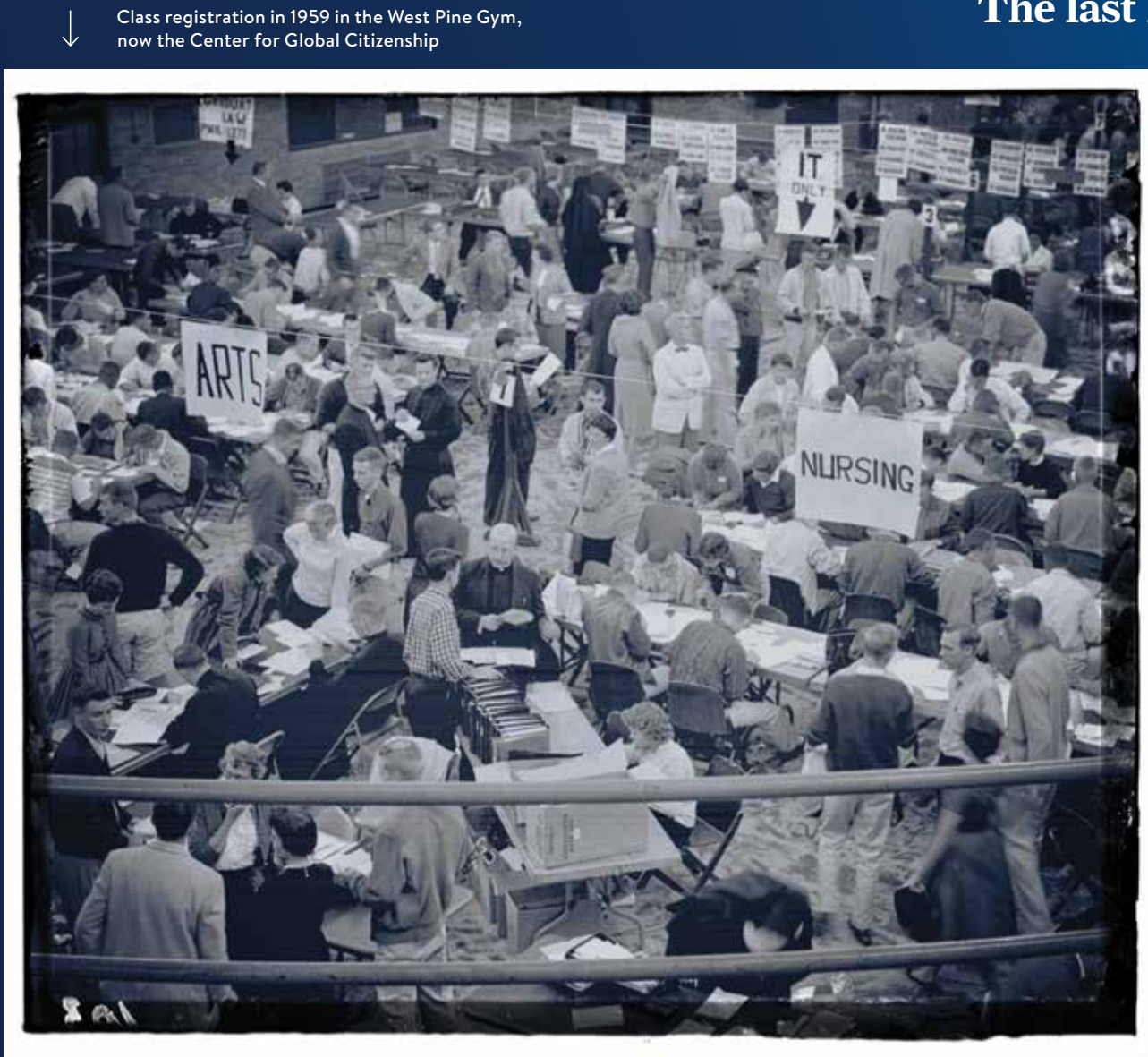
Kathleen Lee (A&S)



In memoriam

Florence Nieder (vsN) Michael Sandweg (ED) Marjorie Sundfors (DCHS)		Marie Gentile (A&S) Ann Hannigan (CSB) Eva Wren (vsN)		1995 Rachel Joyce Waller (vsN)		2005 Mary (Curtin) Smith (ps) Timothy Wright (LAW)	
1985 Marie Schimelfening (A&S) Kathleen (Neuenschwander) Shipley (DCHS)		1991 Katherine (Niles) Drummond (A&S)		1996 Susan Laughlin (LAW) Luther Oliver (CSB)		2009 Karen Schneider (vsN)	
1986 Sam Rimell (pc)		1992 Bruce Fleissig (CSB) Bryan Lemons (LAW) Branka Tassera (vsN)		1997 Birdean (Hudson) Williams (A&S)		2012 Colleen Lischwe (A&S) Allison Tuma (PH)	
1987 Lisa Christopher (A&S) Alfred Schott (ED)		1993 Sharon Davis (CSB) Kenneth Foreman (MED) Joseph Jeziorski (ED) Elisabeth Kehler (MED) Beatrice Miko (PH) Trent Reichert (A&S)		1998 Shawn Statzer (MED)		2014 Nicole Pleasant (LAW)	
1988 Linda (Sester) Lazear (DCHS)		1994 Amy (Jorgensen) Brooner (DCHS)		2001 Carol Al-Kobri (vsN)		2015 Garvaundo Hamilton (CSB)	
1989 Steven Baak (MED) Clarence Barksdale (A&S) George Bradley (DENT) Debbie Compton (CSB)				2003 Stephen Harrison (MED)		2020 Eric Spendlove (MED)	
		FACULTY AND SUPPORTERS					
<p><b>Dr. Raymond Benoit</b>, professor emeritus in the Department of English, died Jan. 24, 2025, at age 88. He came to SLU in 1965 and remained on the faculty until retiring in 2014. Benoit was a Fulbright professor of American literature in Germany in 1971 and was chairman of the SLU English department throughout the 1970s. His research interests included 19th-century British and American romantic literature.</p>		<p><b>Dr. Robert H. Brockhaus</b>, professor emeritus in the Richard A. Chaifetz School of Business, died Sept. 20, 2024, at age 84. Brockhaus came to SLU in 1973 and began teaching entrepreneurship in 1974, making SLU one of the first 20 schools in the world to teach the subject. In 1987, he founded what is now known as the Chaifetz Center for Entrepreneurship. He retired in 2004. In 2019, SLU established the Robert H. Brockhaus Chair in Entrepreneurship.</p>		<p><b>Sam Fox</b>, a St. Louis philanthropist and former ambassador to Belgium, died Dec. 2, 2024, at age 95. Fox was chairman and CEO of Harbour Group Ltd. and chairman of the Fox Family Foundation. SLU honored him and his late wife, Marilyn Fox, by naming the annual Atlas Week program in their honor in 2009. The couple also received SLU’s Sword of Ignatius Loyola.</p>		<p><b>John C. O’Brien</b>, professor emeritus at the School of Law, died Aug. 6, 2024. He was 81 years old. He started as an assistant professor of law in 1975 and remained on faculty until retiring in 2012. O’Brien also served as an early director of the School of Law Legal Clinics.</p>	
						<p><b>Josef Rohlik</b>, longtime law professor and internationally recognized scholar, died Dec. 6, 2024, at age 84. Rohlik joined the faculty in 1971 and stayed until his retirement. Faculty liaison to the Brussels Seminar, he organized and participated in various international programs for the law school. He also was an active arbitrator since the 1970s.</p>	
<p>The “In Memoriam” section includes the names of alumni who died between July 1, 2023, and March 19, 2025.</p>							

The last look



↓ Class registration in 1959 in the West Pine Gym, now the Center for Global Citizenship

BOLES LAUS LUKASZEWSKI, S.J.

REGISTERING FOR CLASSES Many <i>Universitas</i> readers will remember a registration process that involved going to campus the summer before freshman year to meet an advisor and sign up for classes. While the process has been similar throughout SLU history, the specifics have changed with time, enrollment and evolving technology.	PAPER TRAIL For decades, registration was as described in the 1951 <i>Archive</i> yearbook: “On registration days, thousands of students passed through rows of tables, past numerous file clerks, signing names, filling in and filling out, having cards checked and ... ugh! ... paying out cold cash. ... An efficient system made it possible to complete the whole procedure in as little as thirty minutes. But, darn it, one gremlin that still persisted was the one who called out over the loudspeaker, ‘Section so-and-so has just been closed.’”	A MATTER OF MINUTES In the 1980s, the new Student Information Management System (SIMS) streamlined registration. Academic advisors used computer terminals at their desks to consult SIMS to find appropriate, available courses for students. The 1988 <i>Archive</i> yearbook noted, “Once all of the information is entered and checked, it is sent over to the main printer in DuBourg Hall. The process is completed in about two minutes.”	GOLD STAR In its March 26, 1998, edition, <i>The University News</i> reported about a new way to register — electronically via the Saint Louis University Student Access Record Information (SLUSTAR) system.	PRESENT-DAY REGISTERING Students consult advisors before registering themselves online. During the three-week registration period, each student gets a “time ticket” with the earliest date and time they can register (based on their earned credits).
--	--	---	--	--





SAINT LOUIS UNIVERSITY

1 N. GRAND BLVD.  
ST. LOUIS, MO 63103

NON-PROFIT ORG.  
U.S. POSTAGE  
**PAID**  
ST. LOUIS, MO  
PERMIT NO. 134



# HOMEcoming

20  25

## *and Family Weekend*

SAINT LOUIS UNIVERSITY.

SEPTEMBER 26-28

REGISTRATION OPENS AUG. 1

**This fall, return to where it all began.**

Reconnect with classmates, faculty and staff at events throughout the weekend.

Enjoy tours and make new memories at gatherings for all interests.

Take part in a family-friendly tailgate, cheer on the Billikens and enjoy the signature fireworks show.

**No matter how long it's been since you were last on campus, SLU can't wait to welcome you home!**



Scan the QR code or visit [sluhcfw.com](http://sluhcfw.com) to learn more.